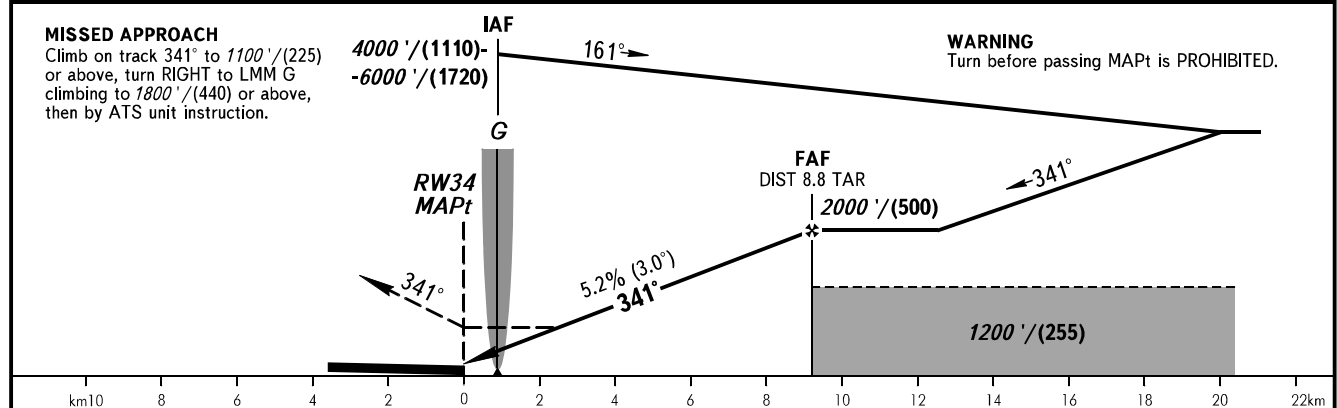
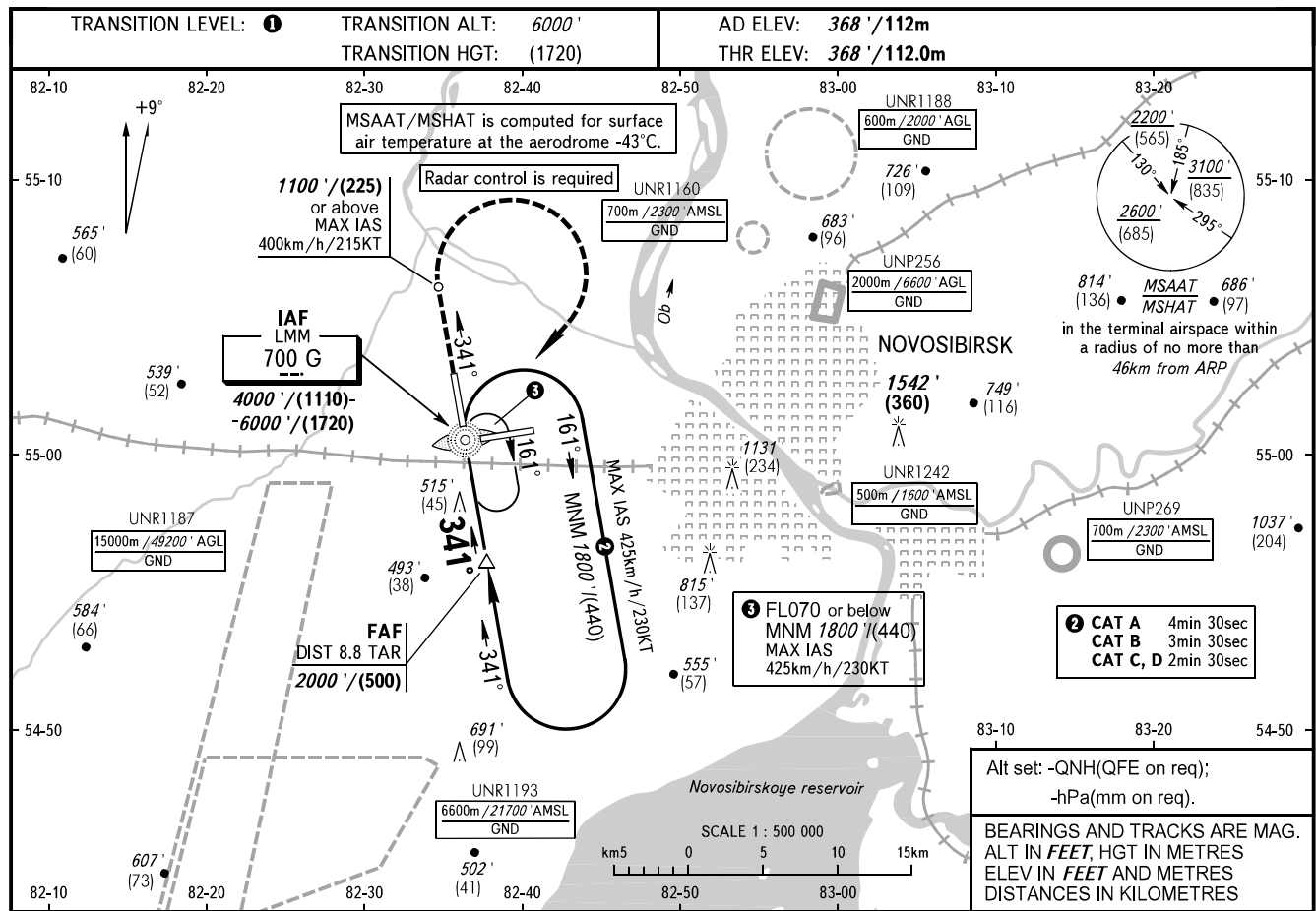


**INSTRUMENT
APPROACH
CHART - ICAO**

**NOVOSIBIRSK, RUSSIA
TOLMACHEVO
NDB Z RWY 34**

RADAR	122.000
TOWER	126.700



OCA(H)		A	B	C	D	① TRANSITION LEVEL:						
Straight-in Approach		770' (410') (125)	770' (410') (125)	770' (410') (125)	770' (410') (125)	- FLO70 when QNH is 1013 hPa (760mm mercury column) or above; - FLO80 when QNH is 977 hPa (733mm mercury column) or above, but less than 1013 hPa (760mm mercury column); - FLO90 when QNH is less than 977 hPa (733mm mercury column).						
						WARNING: 1. The approach procedure shall be used, if clearance to cross UNR1187, UNR1193 (during its activity) or arrangement with ATS unit are AVBL. 2. Holding area shall be used, if clearance to cross UNR1187 (during its activity), UNR1193 (during its activity), UNR1242 (during its activity) or arrangement with ATS unit are AVBL.						
GROUND SPEED	km/h	150	180	210	240	270	300	330	360	390	420	450
	kt	81	97	113	130	146	162	178	194	211	227	243
RATE OF DESCENT	m/s	2.2	2.6	3.0	3.5	3.9	4.3	4.8	5.2	5.6	6.1	6.5
	ft/min	427	512	597	682	768	853	938	1024	1109	1194	1280
FAF - MAPt	9.3 km	min:sec	—	3:43	3:06	2:40	2:20	2:04	1:52	1:42	1:33	1:26