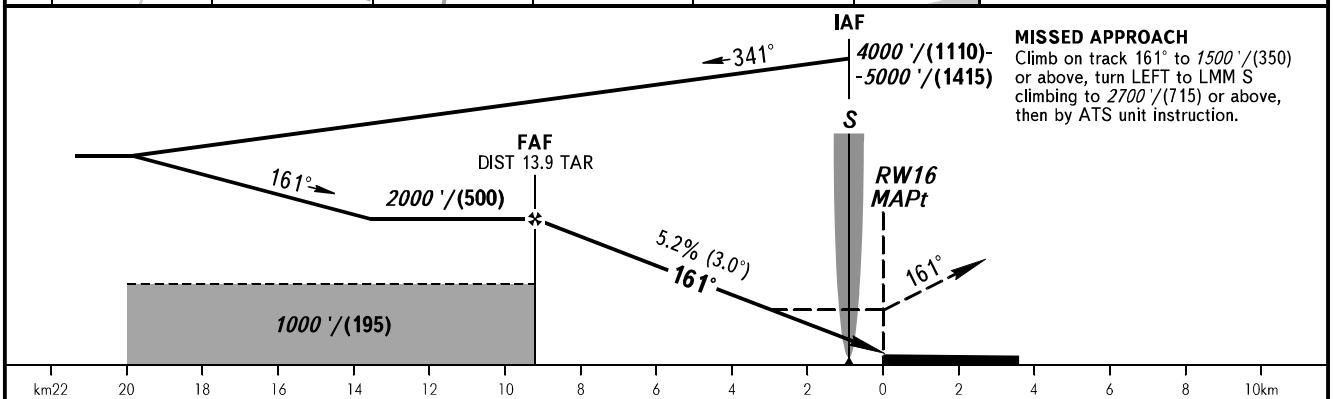
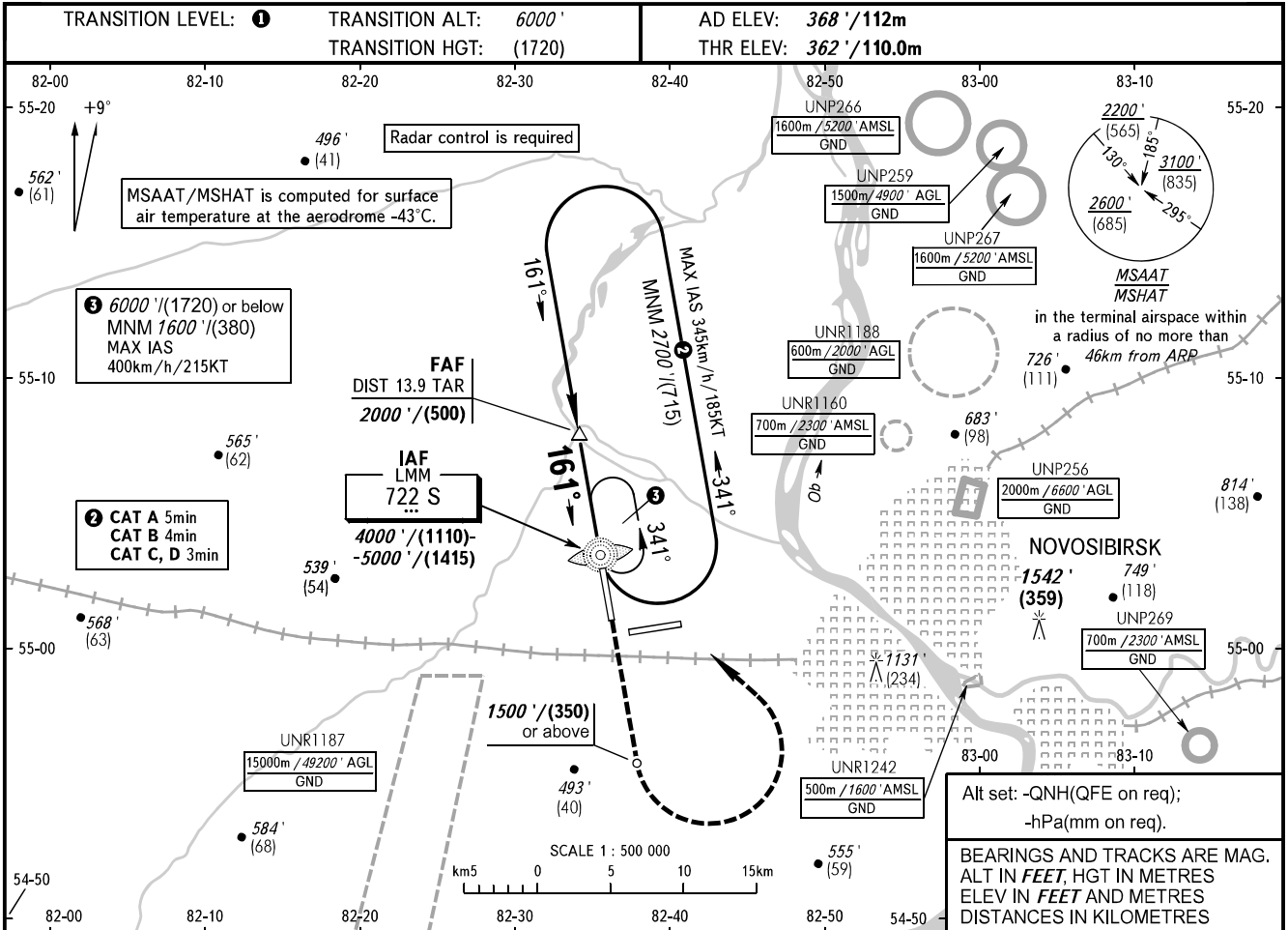


**INSTRUMENT
APPROACH
CHART - ICAO**

**NOVOSIBIRSK, RUSSIA
TOLMACHEVO
NDB Z RWY 16**

RADAR **122.000**
TOWER **126.700**



OCA(H)		A	B	C	D							
Straight-in Approach		750' (390') (120)	750' (390') (120)	750' (390') (120)	750' (390') (120)							
GROUND SPEED	km/h	150	180	210	240	270	300	330	360	390	420	450
	kt	81	97	113	130	146	162	178	194	211	227	243
RATE OF DESCENT	m/s	2.2	2.6	3.0	3.5	3.9	4.3	4.8	5.2	5.6	6.1	6.5
	ft/min	427	512	597	682	768	853	938	1024	1109	1194	1280
FAF - MAPt	9.3 km	min:sec	—	3:43	3:06	2:40	2:20	2:04	1:52	1:42	1:33	1:26

1 TRANSITION LEVEL:
 - FL070 when QNH is 1013 hPa (760mm mercury column) or above;
 - FL080 when QNH is 977 hPa (733mm mercury column) or above, but less than 1013 hPa (760mm mercury column);
 - FL090 when QNH is less than 977 hPa (733mm mercury column).
WARNING:
 1. Holding area shall be used, if clearance to cross UNR1187 (during its activity) or arrangement with ATS unit are AVBL.
 2. Turn before passing MAPt is PROHIBITED.

CHANGE: GPA