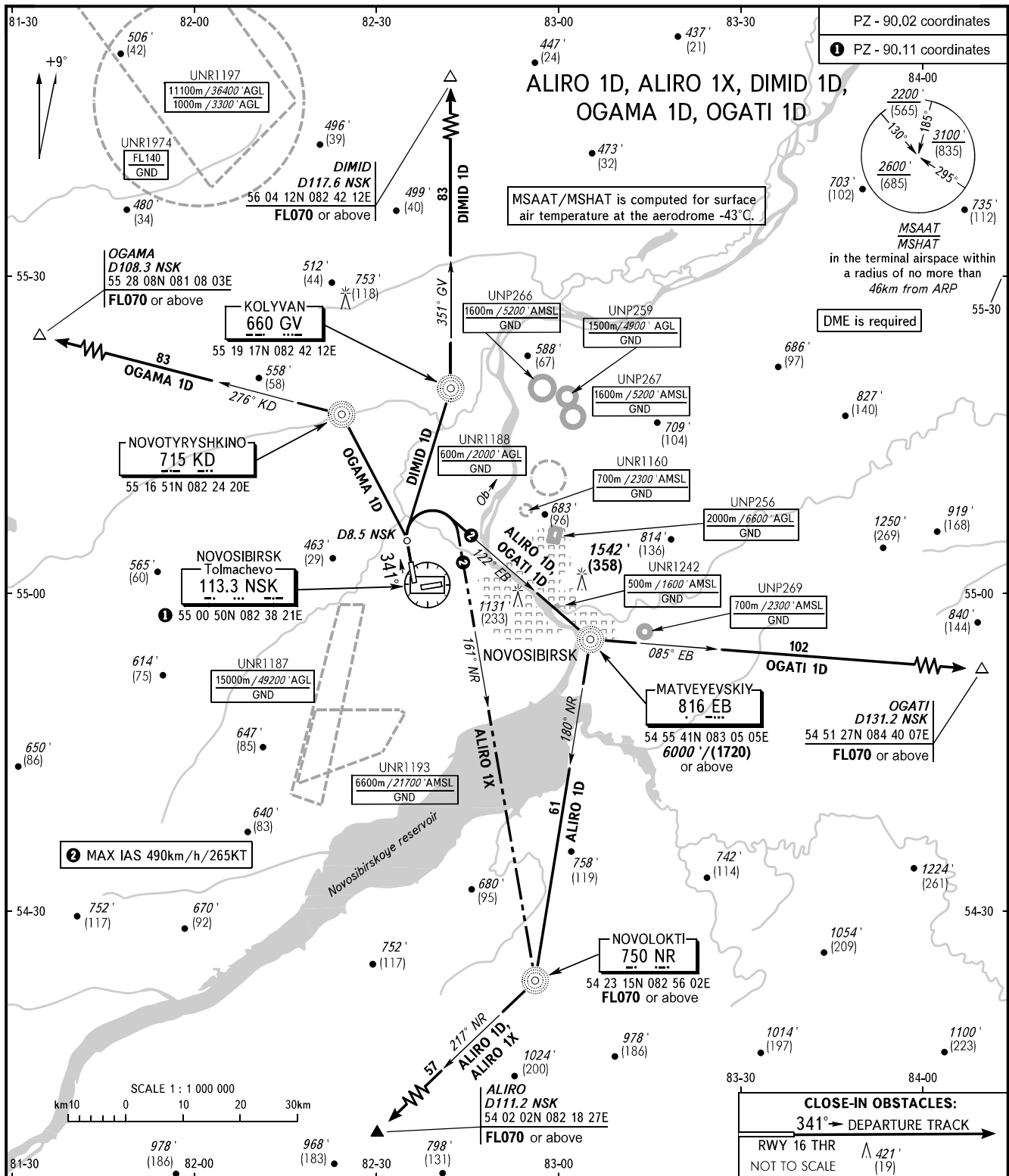


STANDARD DEPARTURE CHART
INSTRUMENT (SID) - ICAO

TRANSITION ALT : **6000'**
TRANSITION HGT : **(1720)**

NOVOSIBIRSK, RUSSIA
TOLMACHEVO
RWY 34



TOWER **126.700**
RADAR **122.000**
APPROACH **127.500**

WARNING
The minimum climb gradients are as follows
(required due to the airspace structure):
- 4.1% up to FLO70 for ALIRO 1D, ALIRO 1X;
- 3.9% up to 6000'/(1720) for OGATI 1D.

BEARINGS AND TRACKS ARE MAGNETIC
ALTITUDES IN **FEET**, HEIGHTS IN METRES
ELEVATIONS IN METRES AND **FEET**
DISTANCES IN KILOMETRES

Alt set: -QNH(QFE on req);
-hPa(mm on req).