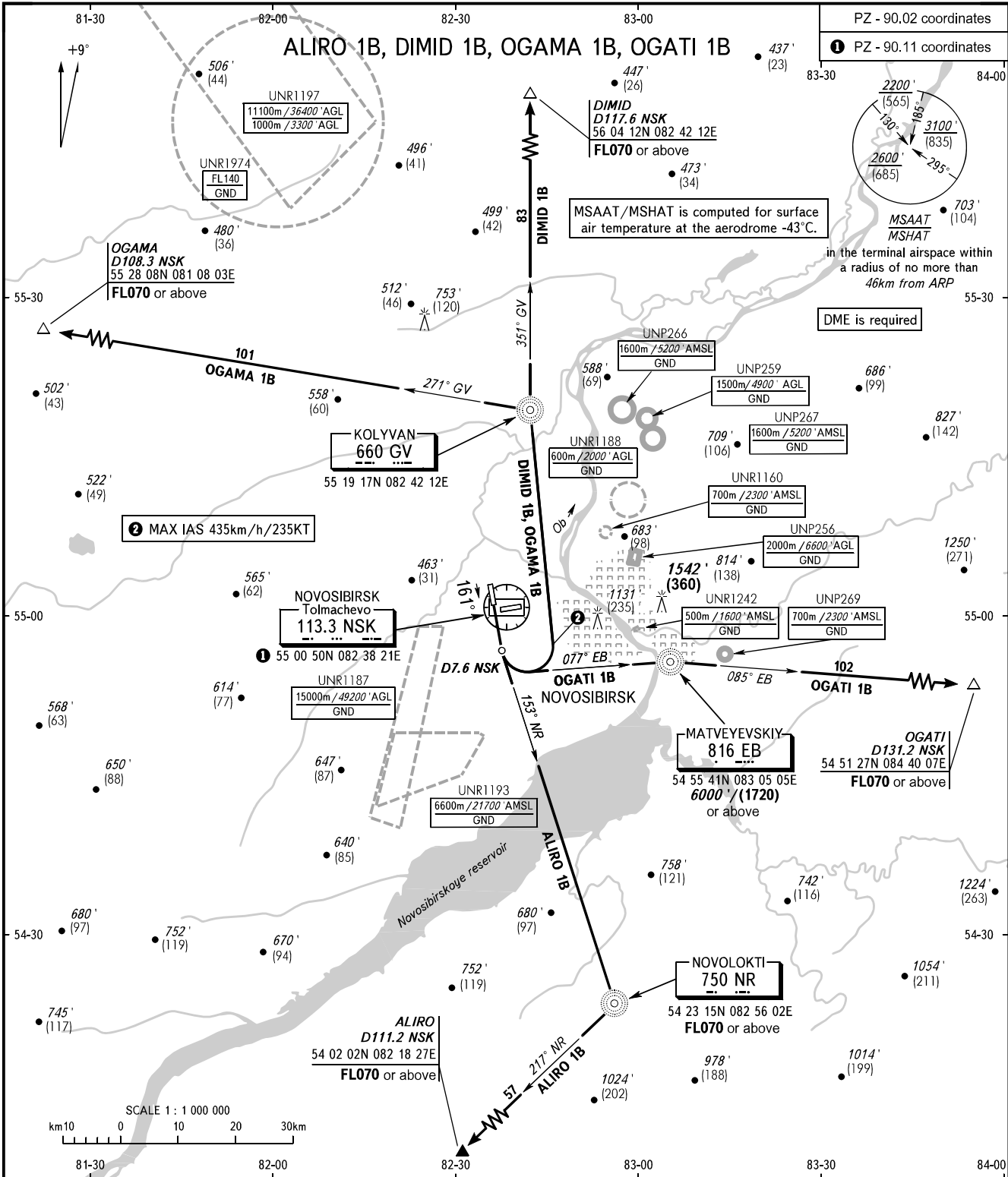


STANDARD DEPARTURE CHART
INSTRUMENT (SID) - ICAO

TRANSITION ALT : 6000'
TRANSITION HGT : (1720)

NOVOSIBIRSK, RUSSIA
TOLMACHEVO
RWY 16



TOWER	126.700
RADAR	122.000
APPROACH	127.500

WARNING
The minimum climb gradients are as follows (required due to the airspace structure):

- 4.7% up to FL070 for ALIRO 1B;
- 4.1% up to 6000'/(1720) for OGATI 1B.

BEARINGS AND TRACKS ARE MAGNETIC
ALTITUDES IN FEET, HEIGHTS IN METRES
ELEVATIONS IN METRES AND FEET
DISTANCES IN KILOMETRES

Alt set: -QNH(QFE on req);
-hPa(mm on req).

CHANGE: New chart