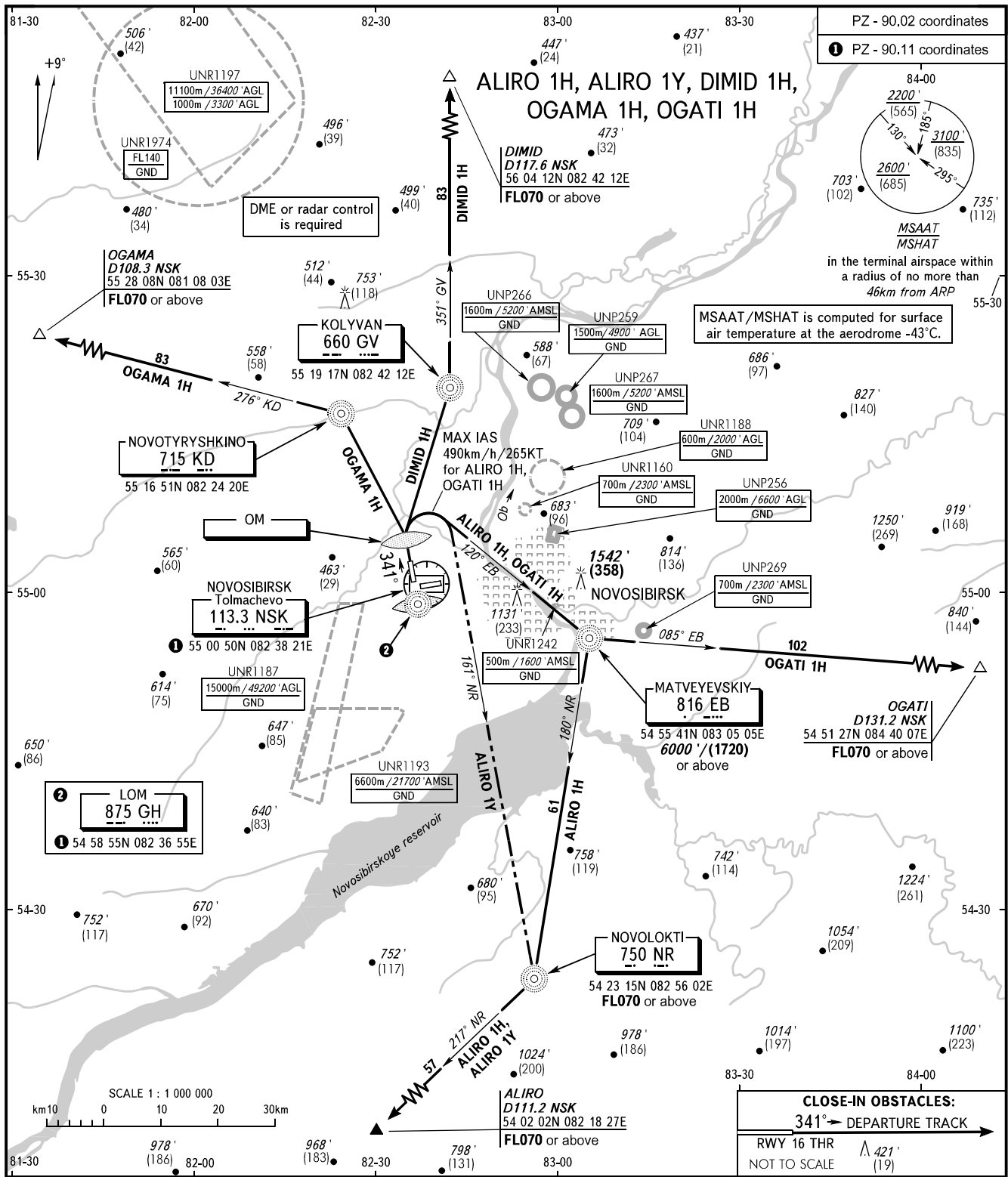


STANDARD DEPARTURE CHART  
INSTRUMENT (SID) - ICAO

TRANSITION ALT : **6000'**  
TRANSITION HGT : **(1720)**

NOVOSIBIRSK, RUSSIA  
TOLMACHEVO  
RWY 34



TOWER **126.700**  
RADAR **122.000**  
APPROACH **127.500**

**WARNING**  
The minimum climb gradients are as follows (required due to the airspace structure):  
- 4.0% up to FL070 for ALIRO 1H, ALIRO 1Y;  
- 3.7% up to 6000' (1720) for OGATI 1H.

BEARINGS AND TRACKS ARE MAGNETIC  
ALTITUDES IN FEET, HEIGHTS IN METRES  
ELEVATIONS IN METRES AND FEET  
DISTANCES IN KILOMETRES

Alt set: -QNH(QFE on req);  
-hPa(mm on req).

**CLOSE-IN OBSTACLES:**  
341° DEPARTURE TRACK  
RWY 16 THR  $\Delta$  421' (19)  
NOT TO SCALE