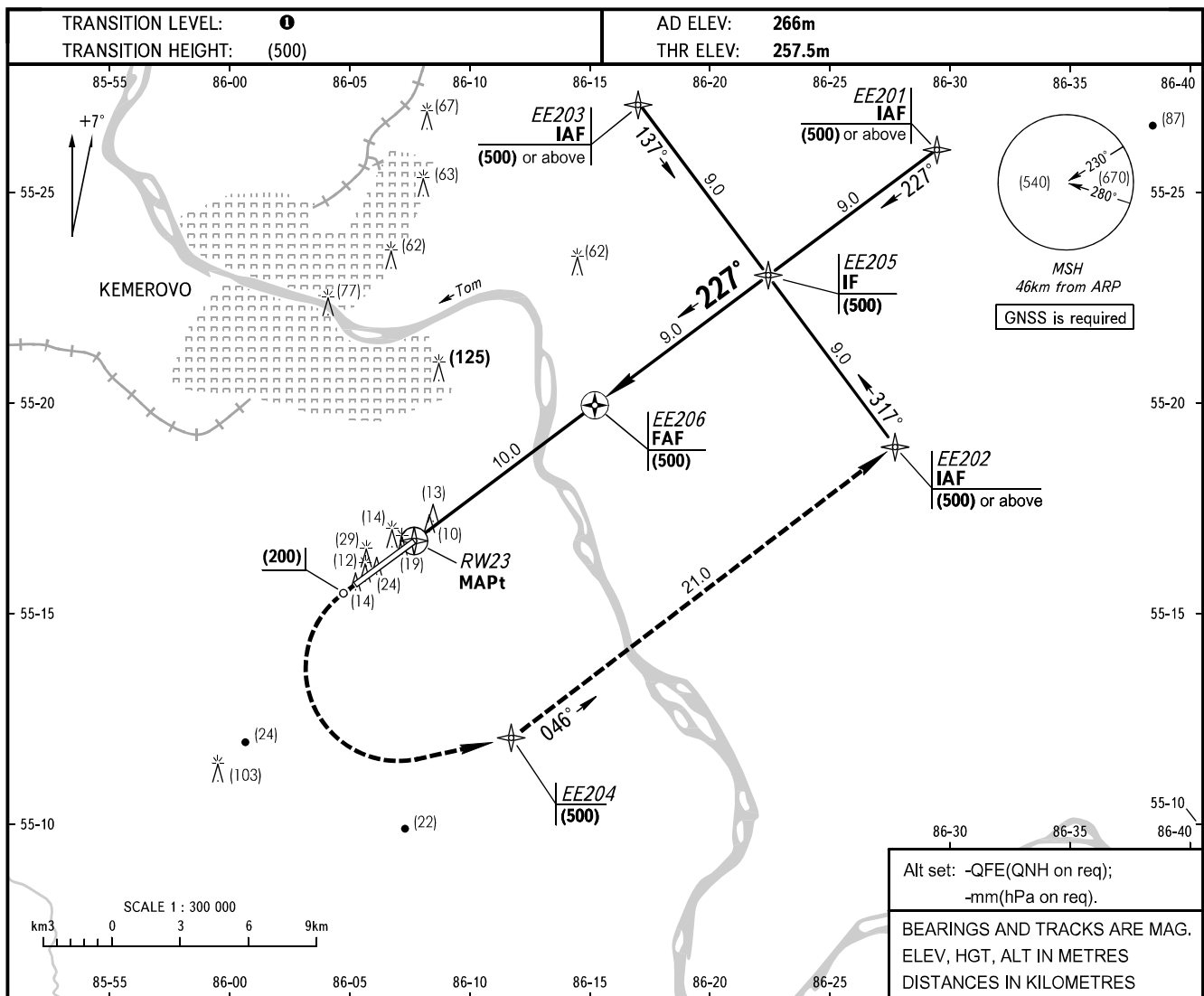


**INSTRUMENT  
APPROACH  
CHART - ICAO**

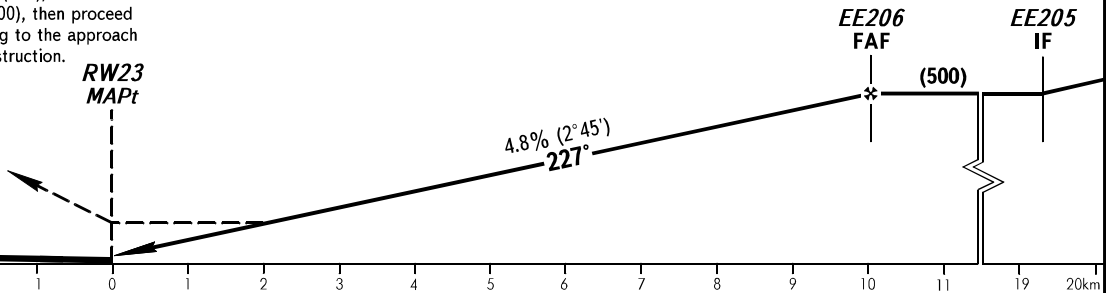
APPROACH	<b>125.500</b>
START	<b>118.300</b>

**KEMEROVO, RUSSIA**  
KEMEROVO  
RNAV RWY 23



**MISSED APPROACH**

Climb straight ahead to (200), turn LEFT to EE204 climbing to (500), then proceed to EE202, then according to the approach chart or by ATS unit instruction.



OCA(H)		A	B	C	D							
Straight-in	With FAF	380(120)	380(120)	380(120)	380(120)							
	WO FAF	395(135)	395(135)	395(135)	395(135)							
Approach												
GROUND SPEED	km/h	150	180	210	240	270	300	330	360	390	420	450
RATE OF DESCENT	m/s	2.0	2.4	2.8	3.2	3.6	4.0	4.4	4.8	5.2	5.6	6.0

**WARNING**

Ground Proximity Warning System is subject to functioning.

**1** TRANSITION LEVEL:

- FL030 when QFE is 760mm mercury column or above;
- FL040 when QFE is 733mm mercury column or above, but less than 760mm mercury column;
- FL050 when QFE is less than 733mm mercury column.

CHANGE: New chart