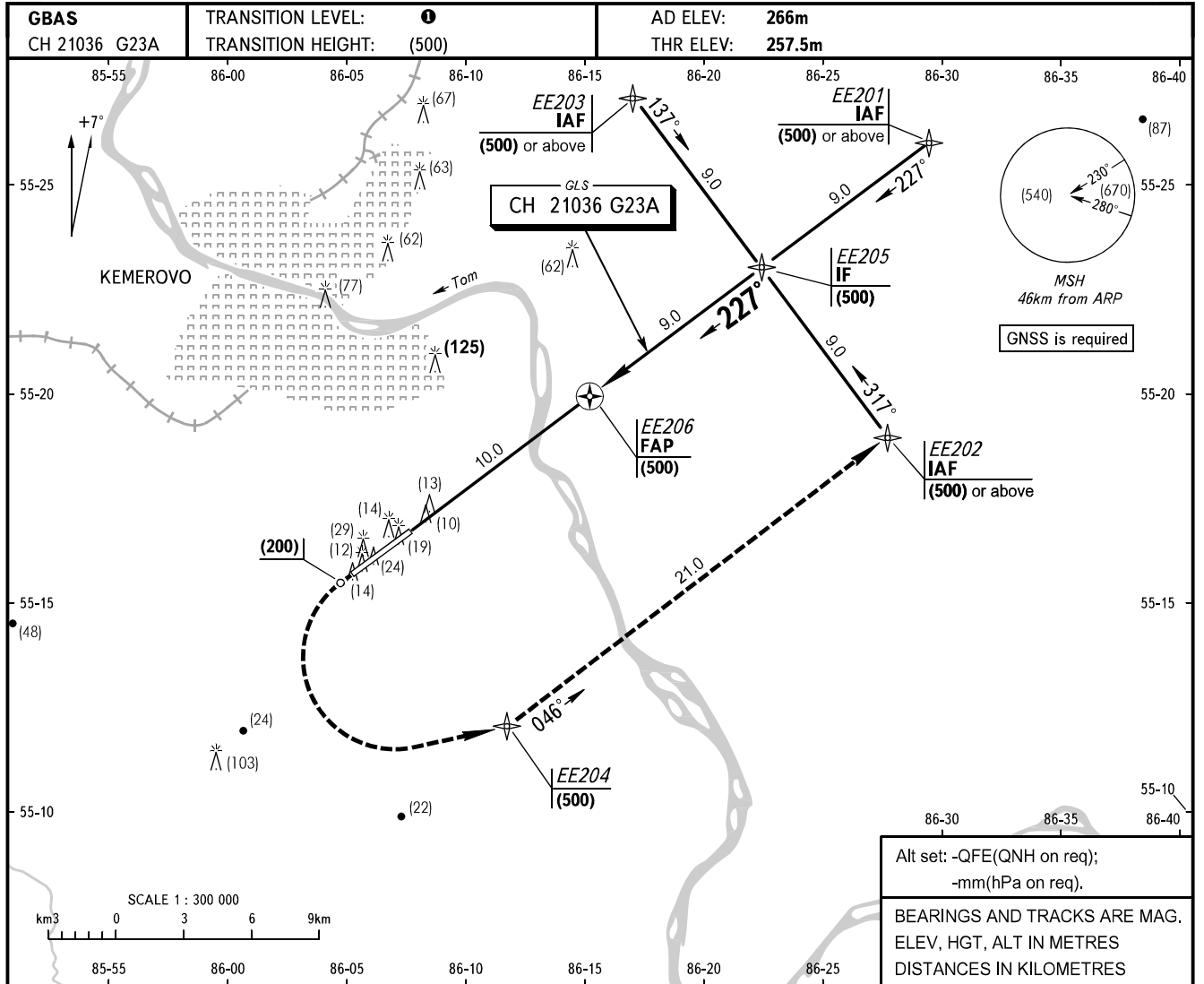


**INSTRUMENT
APPROACH
CHART - ICAO**

APPROACH **125.500**
START **118.300**

KEMEROVO, RUSSIA
KEMEROVO
GLS RWY 23

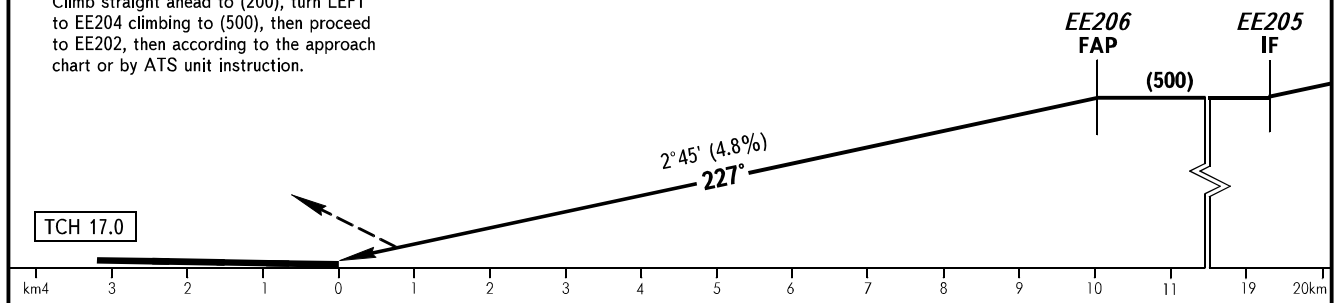


Alt set: -QFE(QNH on req);
-mm(hPa on req).

BEARINGS AND TRACKS ARE MAG.
ELEV, HGT, ALT IN METRES
DISTANCES IN KILOMETRES

MISSED APPROACH

Climb straight ahead to (200), turn LEFT to EE204 climbing to (500), then proceed to EE202, then according to the approach chart or by ATS unit instruction.



OCA(H)		A	B	C	D
Straight-in		315(58)	318(61)	321(64)	324(67)
	Approach				

WARNING
Ground Proximity Warning System is subject to functioning.

① TRANSITION LEVEL:

- FL030 when QFE is 760mm mercury column or above;
- FL040 when QFE is 733mm mercury column or above, but less than 760mm mercury column;
- FL050 when QFE is less than 733mm mercury column.

GROUND SPEED	km/h	150	180	210	240	270	300	330	360	390	420	450
RATE OF DESCENT	m/s	2.0	2.4	2.8	3.2	3.6	4.0	4.4	4.8	5.2	5.6	6.0

CHANGE: OCA(H)