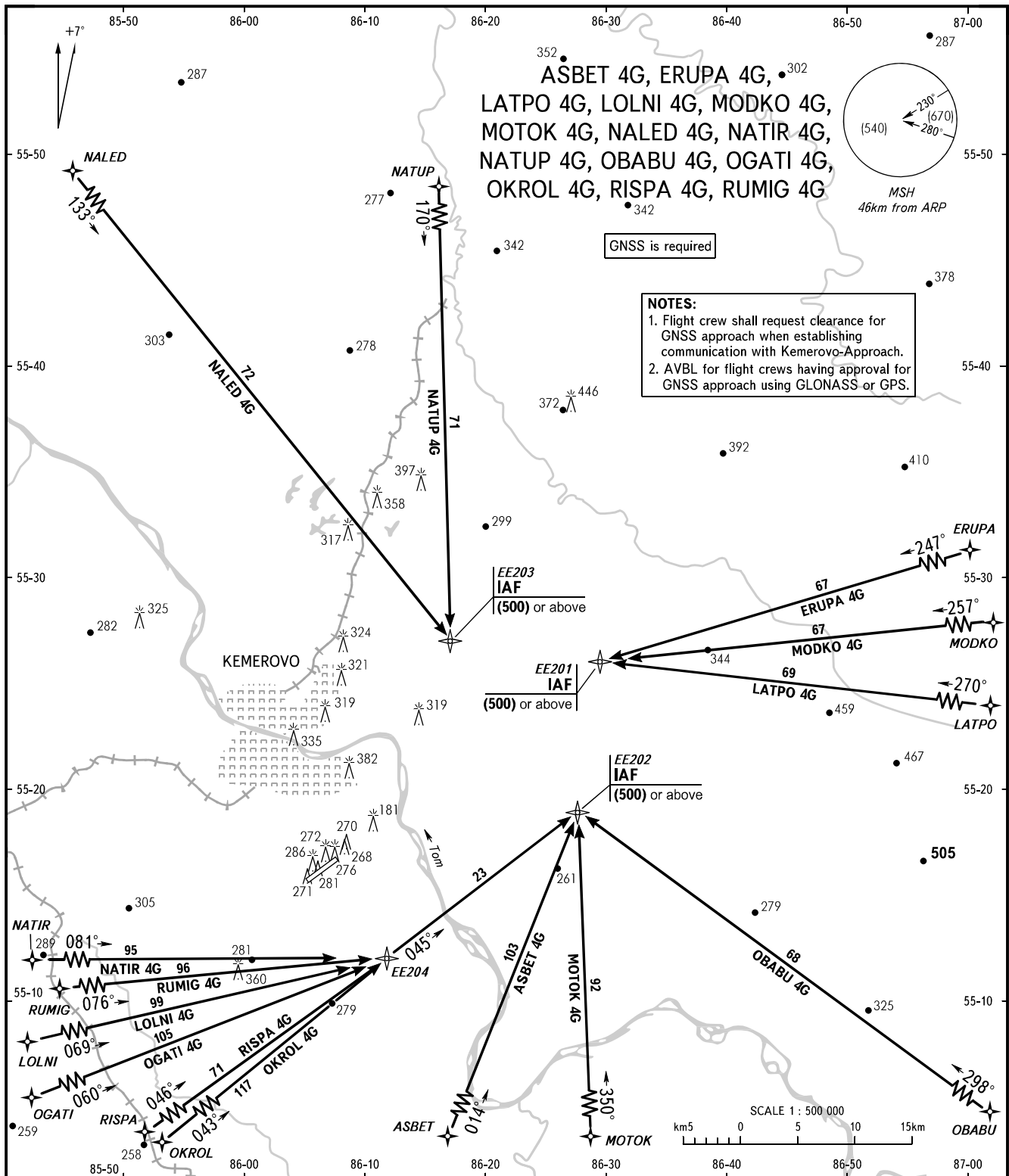


STANDARD ARRIVAL CHART
INSTRUMENT (STAR) - ICAO

KEMEROVO, RUSSIA
KEMEROVO
RNAV RWY 23

TRANSITION
LEVEL : 1



APPROACH 125.500
START 118.300

- 1 TRANSITION LEVEL:
- FL030 when QFE is 760mm mercury column or above;
- FL040 when QFE is 733mm mercury column or above, but less than 760mm mercury column;
- FL050 when QFE is less than 733mm mercury column.

BEARINGS AND TRACKS ARE MAGNETIC
ALTITUDES, HEIGHTS AND ELEVATIONS IN METRES
DISTANCES IN KILOMETRES

Alt set: -QFE(QNH on req);
-mm(hPa on req).