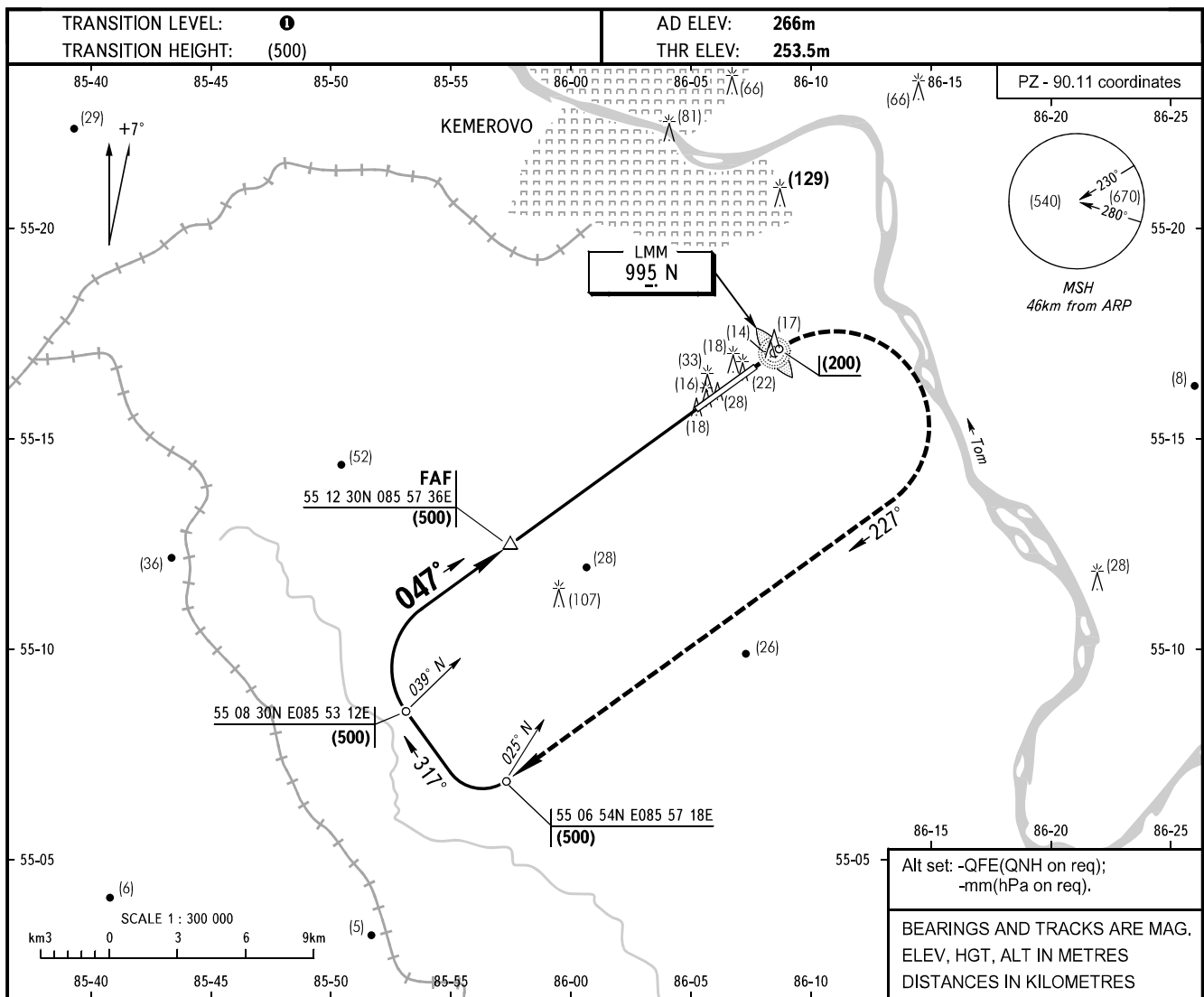


INSTRUMENT  
APPROACH  
CHART - ICAO

APPROACH **125.500**  
START **118.300**

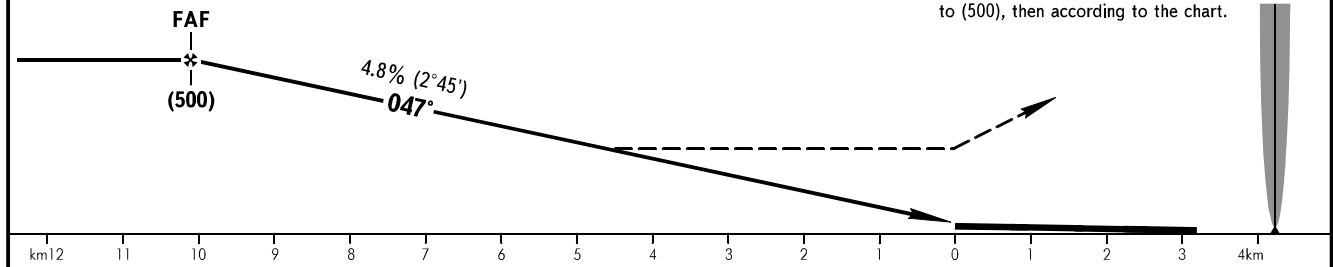
**KEMEROVO, RUSSIA**  
KEMEROVO  
NDB RWY 05



FAF is D12.4 from TAR

**MISSED APPROACH**

Climb on track 047° to (200), then turn RIGHT onto track 227° climbing to (500), then according to the chart.



		OCA(H)	A	B	C	D
Straight-in	NDB	With FAF	435(185)	435(185)	435(185)	435(185)
		WO FAF	450(200)	450(200)	450(200)	450(200)
Approach						

**WARNING**

Ground Proximity Warning System is subject to functioning.

**1** TRANSITION LEVEL:

- FL030 when QFE is 760mm mercury column or above;
- FL040 when QFE is 733mm mercury column or above, but less than 760mm mercury column;
- FL050 when QFE is less than 733mm mercury column.

GROUND SPEED	km/h	150	180	210	240	270	300	330	360	390	420	450
RATE OF DESCENT	m/s	2.0	2.4	2.8	3.2	3.6	4.0	4.4	4.8	5.2	5.6	6.0