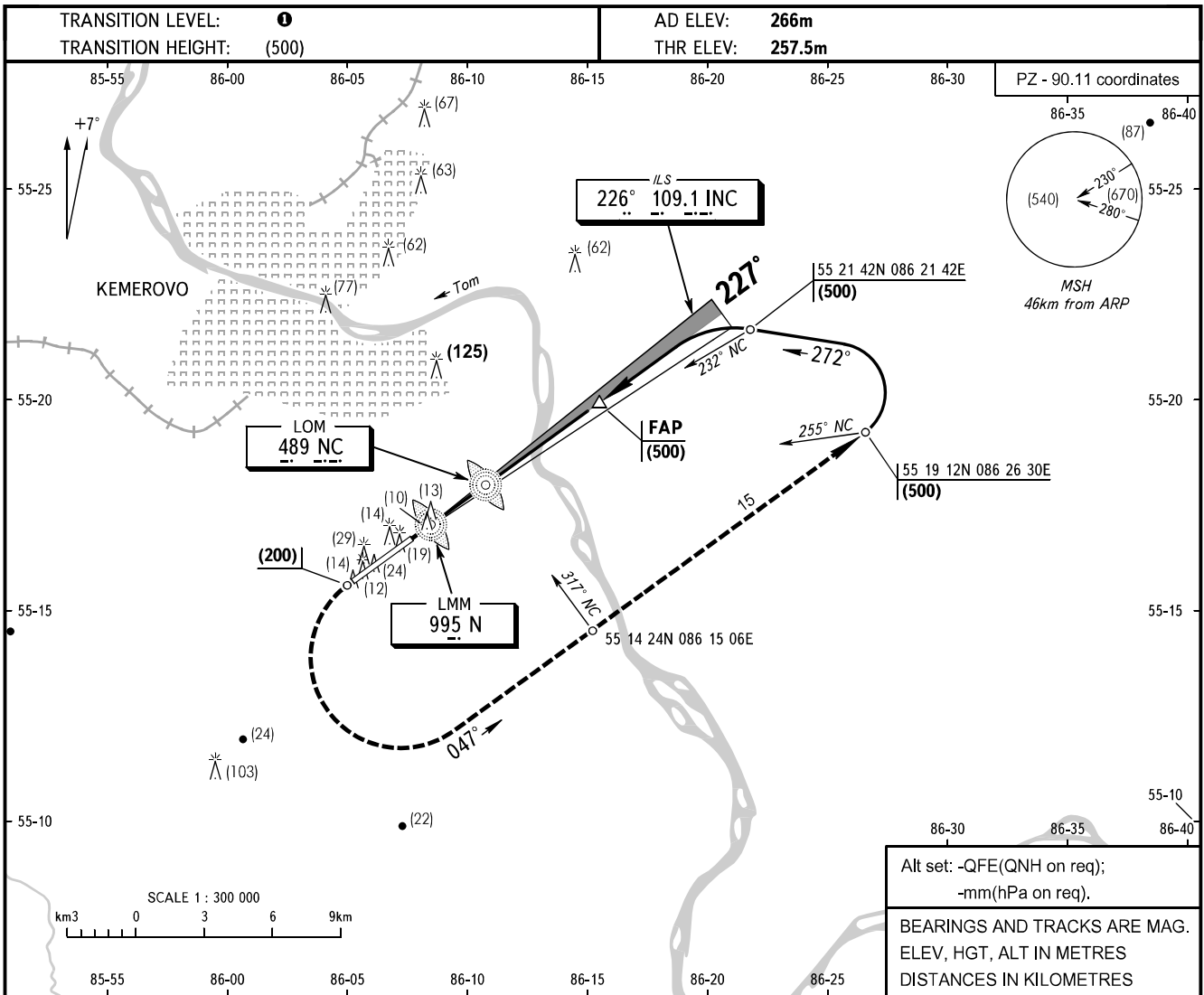


INSTRUMENT
APPROACH
CHART - ICAO

APPROACH 125.500
START 118.300

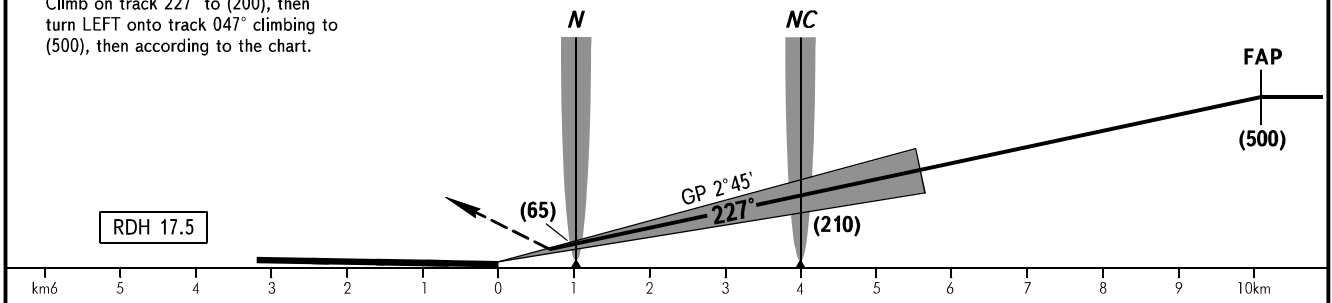
KEMEROVO, RUSSIA
KEMEROVO
ILS CAT I RWY 23



MISSED APPROACH

Climb on track 227° to (200), then turn LEFT onto track 047° climbing to (500), then according to the chart.

RDH 17.5



OCA(H)		A	B	C	D							
Straight-in	CAT I	315(58)	318(61)	321(64)	324(67)							
Approach												
GROUND SPEED	km/h	150	180	210	240	270	300	330	360	390	420	450
RATE OF DESCENT	m/s	2.0	2.4	2.8	3.2	3.6	4.0	4.4	4.8	5.2	5.6	6.0

WARNING

Ground Proximity Warning System is subject to functioning.

1 TRANSITION LEVEL:

- FL030 when QFE is 760mm mercury column or above;
- FL040 when QFE is 733mm mercury column or above, but less than 760mm mercury column;
- FL050 when QFE is less than 733mm mercury column.

CHANGE: New chart