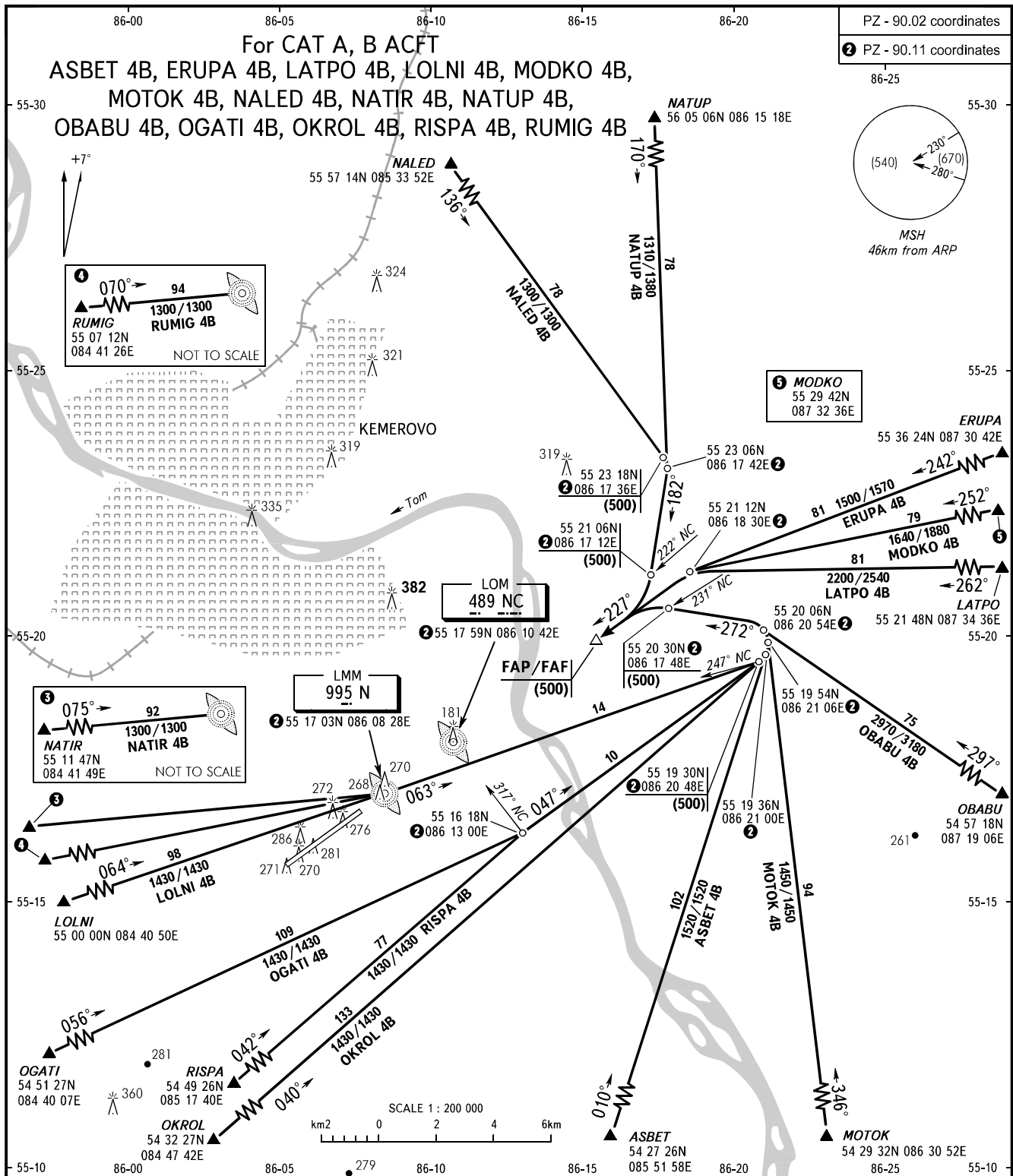


STANDARD ARRIVAL CHART
INSTRUMENT (STAR) - ICAO

KEMEROVO, RUSSIA
KEMEROVO
RWY 23

TRANSITION
LEVEL: 1

PZ - 90.02 coordinates
2 PZ - 90.11 coordinates



APPROACH START 125.500 118.300

- 1 TRANSITION LEVEL:
- FL030 when QFE is 760mm mercury column or above;
 - FL040 when QFE is 733mm mercury column or above, but less than 760mm mercury column;
 - FL050 when QFE is less than 733mm mercury column.

BEARINGS AND TRACKS ARE MAGNETIC
ALTITUDES, HEIGHTS AND ELEVATIONS IN METRES
DISTANCES IN KILOMETRES

Alt set: -QFE(QNH on req);
-mm(hPa on req).

CHANGE: OKROL 4B, LOLNI 4B