

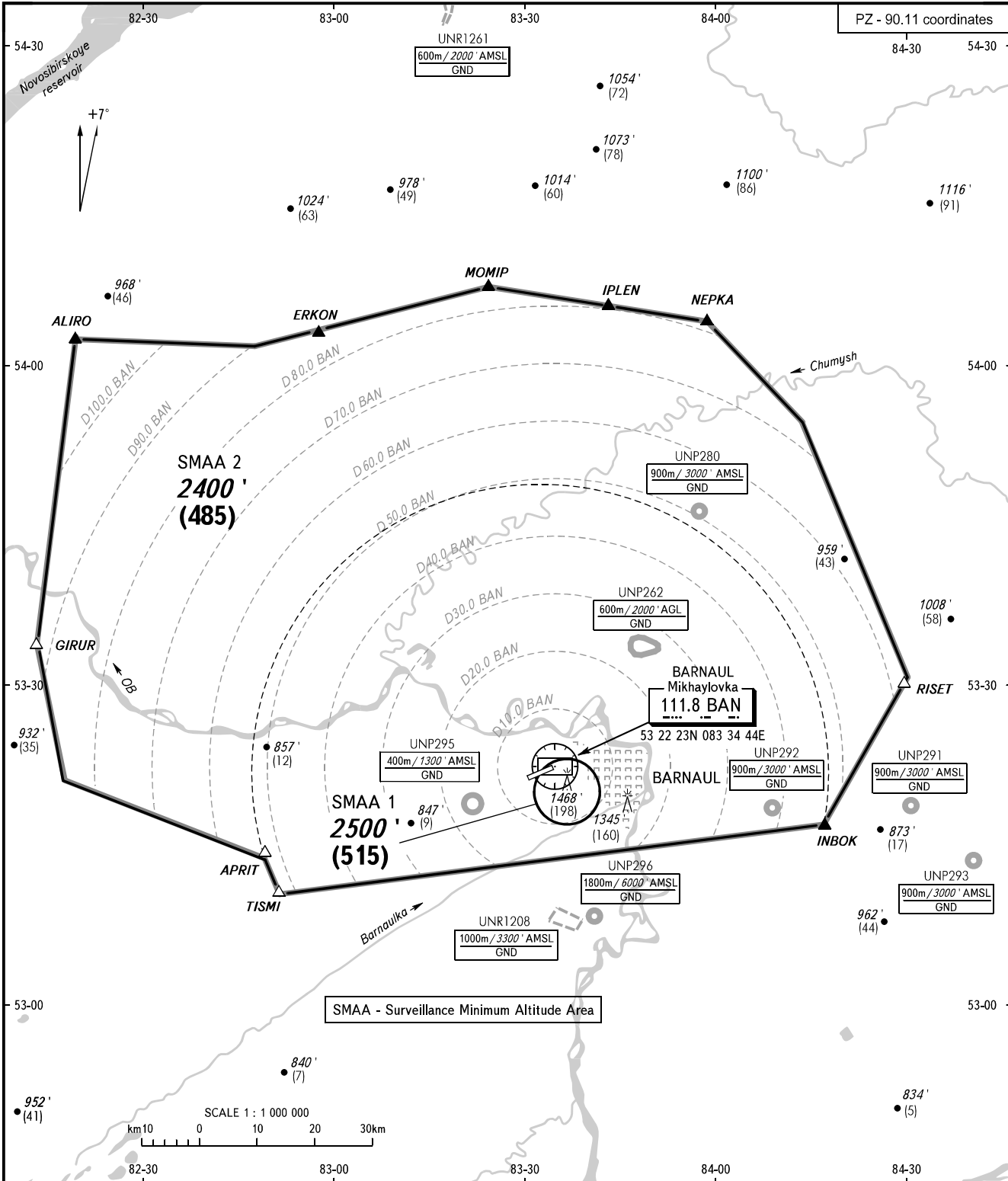
ATC SURVEILLANCE MINIMUM  
ALTITUDE CHART - ICAO

ELEV  
838 / 255m

TRANSITION ALT: 4000'  
TRANSITION HGT: (970)

BARNAUL, RUSSIA

MIKHAYLOVKA



TOWER 123.500

**WARNING:**

1. The chart may only be used for cross-checking of altitudes assigned while the aircraft is under radar control.
2. When vectoring is carried out under low-temperature conditions, minimum vectoring altitudes for IFR flight must be corrected by altimeter temperature correction.
3. HGT is given relative to THR 24 ELEV 800 / 250.0m.

**COMMUNICATION FAILURE:**

In accordance with the procedures described in AIP.

BEARINGS AND TRACKS ARE MAGNETIC  
ALTITUDES IN FEET  
HEIGHTS IN METRES  
ELEVATIONS IN FEET AND METRES  
DISTANCES IN KILOMETRES

Alt set: -QNH(QFE on req);  
-hPa(mm on req).

CHANGE: New chart

**BARNAUL, RUSSIA**  
**MIKHAYLOVKA**

<b>SURVEILLANCE MINIMUM ALTITUDE AREAS</b>		
<b>IDENT</b>	<b>MNM ALT/HGT ft/m</b>	<b>LATERAL LIMITS (PZ-90.11 coordinates)</b>
SMAA 1	2500 (515)	A circle radius of 5.7 KM centred at 532008N 0833636E.
SMAA 2	2400 (485)	540202N 0821827E - 540136N 0824700E - 540718N 0832412E - 540400N 0835900E - 535430N 0841400E - 533030N 0843006E - 531648N 0841642E - 531018N 0825148E - 531330N 0824930E - 532040N 0821744E - 533332N 0821324E - 540202N 0821827E, excluding SMAA 1 area.