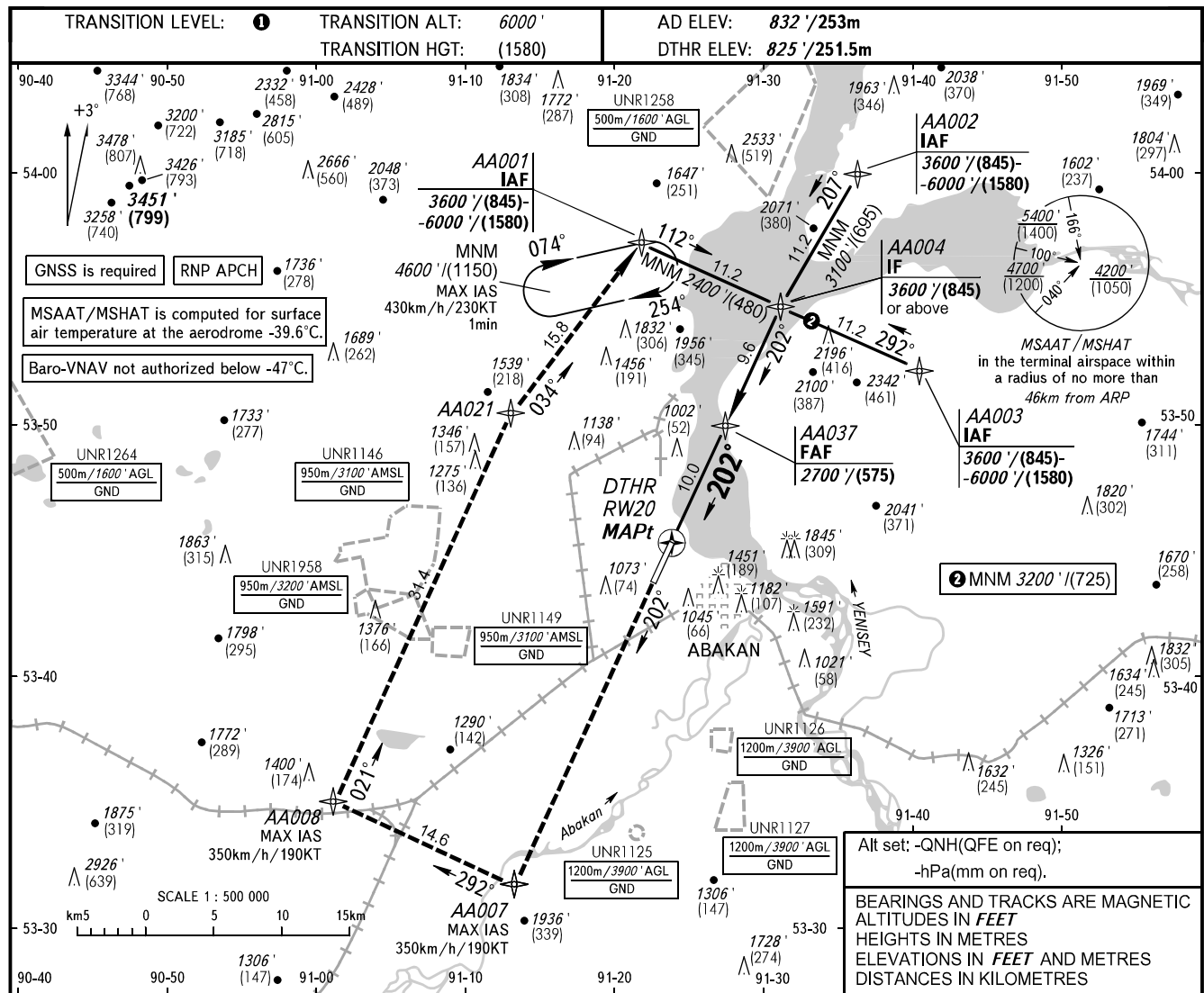


**INSTRUMENT
APPROACH
CHART - ICAO**

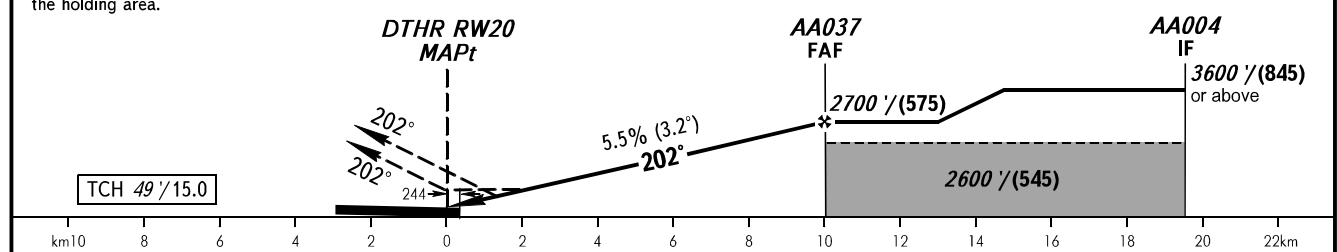
**ABAKAN, RUSSIA
ABAKAN
RNP RWY 20**

RADAR **134.300**
START **122.000**



MISSED APPROACH
Climb on track 202° to AA007, turn RIGHT to AA008, proceed to AA021, proceed to AA001 climbing to 3600' (845) or above, then according to chart or to the holding area.

DIST to DTHR RW20	2.0	4.0	6.0	8.0
ALTITUDE/HEIGHT	1230' (125)	1600' (240)	1960' (345)	2320' (455)



OCA(H)		A	B	C	D			
Straight-in Approach	LNAV/VNAV	1170' (350') (110)	1170' (350') (110)	1170' (350') (110)	1170' (350') (110)			
	LNAV	1420' (600') (185)	1420' (600') (185)	1420' (600') (185)	1420' (600') (185)			
Circling		1310' (480') (150)	1750' (920') (280)	1850' (1020') (310)	2340' (1510') (460)			
GROUND SPEED	km/h	150	180	210	240	270	300	330
	kt	81	97	113	130	146	162	178
RATE OF DESCENT	m/s	2.3	2.8	3.2	3.7	4.1	4.6	5.2
	ft/min	451	541	632	722	812	902	992

TRANSITION LEVEL:

- FL070 when QNH is 1013 hPa (760mm mercury column) or above;
- FL080 when QNH is 977 hPa (733mm mercury column) or above, but less than 1013 hPa (760mm mercury column);
- FL090 when QNH is less than 977 hPa (733mm mercury column).

CHANGE: OCA(H), FAF