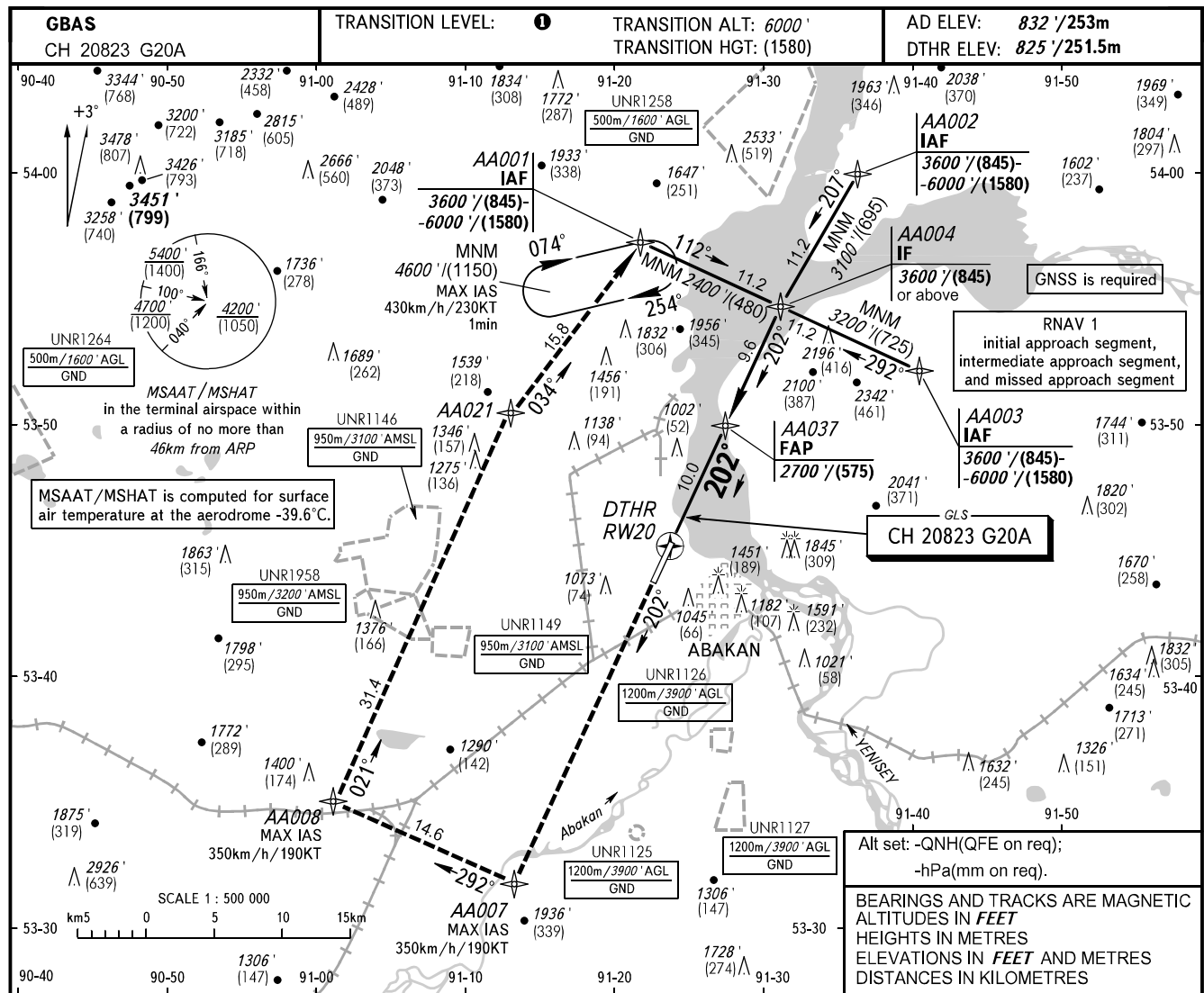


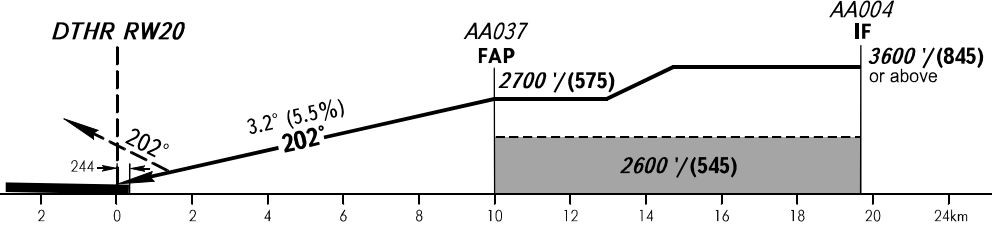
**INSTRUMENT  
APPROACH  
CHART - ICAO**

**ABAKAN, RUSSIA  
ABAKAN  
GLS RWY 20**

RADAR **134.300**  
START **122.000**



**MISSED APPROACH**  
Climb on track 202° to AA007, turn RIGHT to AA008, proceed to AA021, proceed to AA001 climbing to 3600' / (845) or above, then according to chart or to the holding area.



| OCA(H)               |              | A              | B              | C               | D               |     |     |     |
|----------------------|--------------|----------------|----------------|-----------------|-----------------|-----|-----|-----|
| Straight-in Approach | <b>CAT I</b> | 1013' / (188') | 1025' / (200') | 1033' / (208')  | 1043' / (218')  |     |     |     |
|                      |              | (57)           | (61)           | (64)            | (67)            |     |     |     |
| Circling             |              | 1310' / (480') | 1750' / (920') | 1850' / (1020') | 2340' / (1510') |     |     |     |
|                      |              | (150)          | (280)          | (310)           | (460)           |     |     |     |
| GROUND SPEED         | km/h         | 150            | 180            | 210             | 240             | 270 | 300 | 330 |
|                      | kt           | 81             | 97             | 113             | 130             | 146 | 162 | 178 |
| RATE OF DESCENT      | m/s          | 2.3            | 2.8            | 3.2             | 3.7             | 4.1 | 4.6 | 5.2 |
|                      | ft/min       | 451            | 541            | 632             | 722             | 812 | 902 | 992 |

**1** TRANSITION LEVEL:  
- FL070 when QNH is 1013 hPa (760mm mercury column) or above;  
- FL080 when QNH is 977 hPa (733mm mercury column) or above, but less than 1013 hPa (760mm mercury column);  
- FL090 when QNH is less than 977 hPa (733mm mercury column).