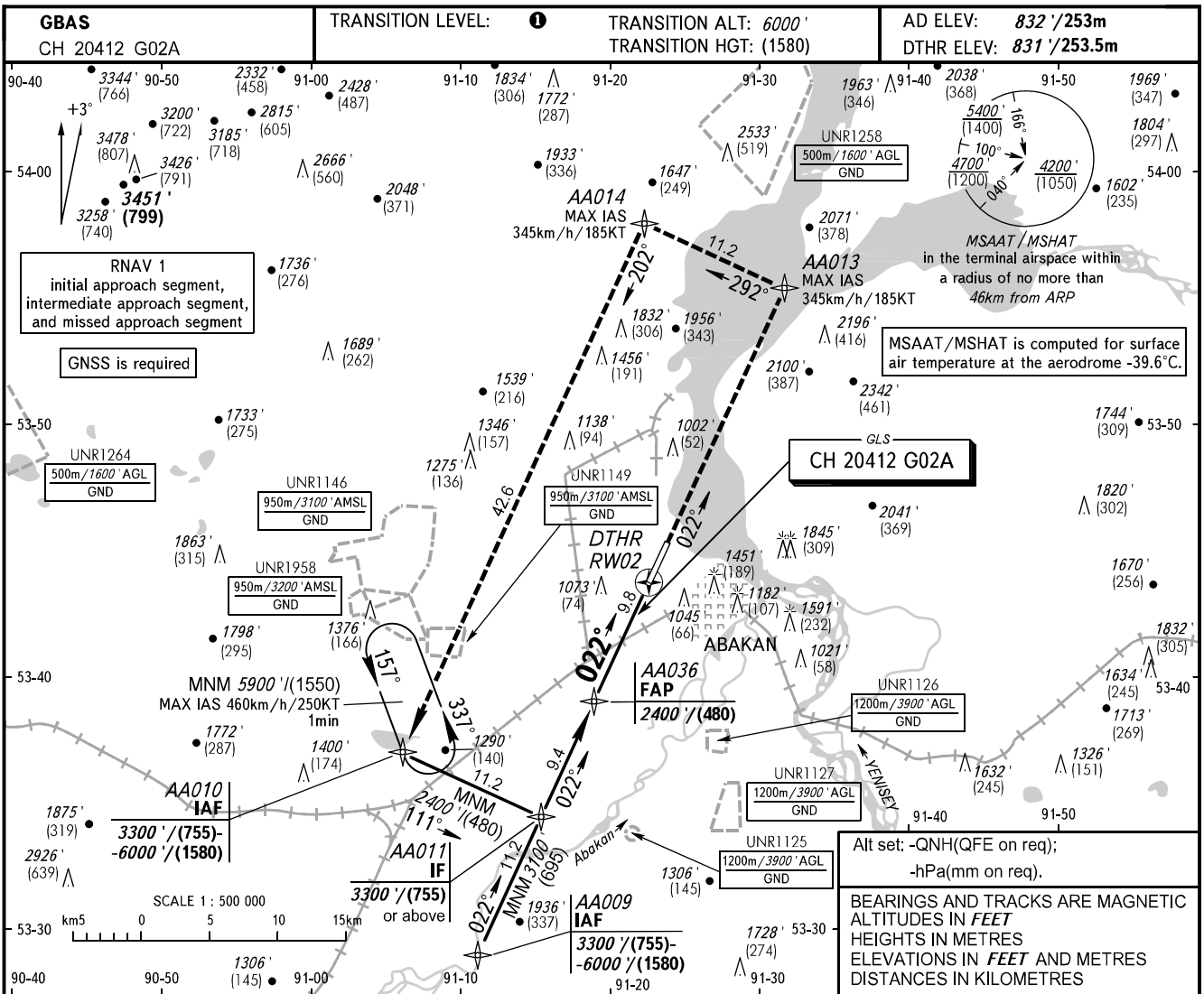


**INSTRUMENT
APPROACH
CHART - ICAO**

RADAR **134.300**
START **122.000**

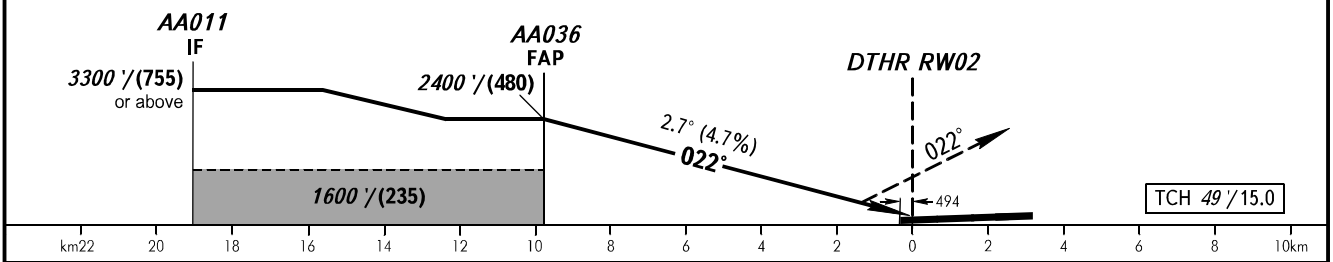
ABAKAN, RUSSIA
ABAKAN
GLS RWY 02



Alt set: -QNH(QFE on req);
-hPa(mm on req).

BEARINGS AND TRACKS ARE MAGNETIC
ALTITUDES IN FEET
HEIGHTS IN METRES
ELEVATIONS IN FEET AND METRES
DISTANCES IN KILOMETRES

MISSED APPROACH
Climb on track 022° to AA013, turn LEFT to AA014, proceed to AA010 climbing to 3300'/(755) or above, then according to chart or to the holding area.



OCA(H)		A	B	C	D
Straight-in Approach	CAT I	998'/(167')	1011'/(180')	1019'/(188')	1029'/(198')
		(51)	(55)	(57)	(61)
Circling		1310'/(480')	1750'/(920')	1850'/(1020')	2340'/(1510')
		(150)	(280)	(310)	(460)

TRANSITION LEVEL:

- FL070 when QNH is 1013 hPa (760mm mercury column) or above;
- FL080 when QNH is 977 hPa (733mm mercury column) or above, but less than 1013 hPa (760mm mercury column);
- FL090 when QNH is less than 977 hPa (733mm mercury column).

GROUND SPEED	km/h	150	180	210	240	270	300	330
	kt	81	97	113	130	146	162	178
RATE OF DESCENT	m/s	2.0	2.4	2.7	3.1	3.5	3.9	4.3
	ft/min	385	463	540	617	694	771	848

CHANGE: New chart