

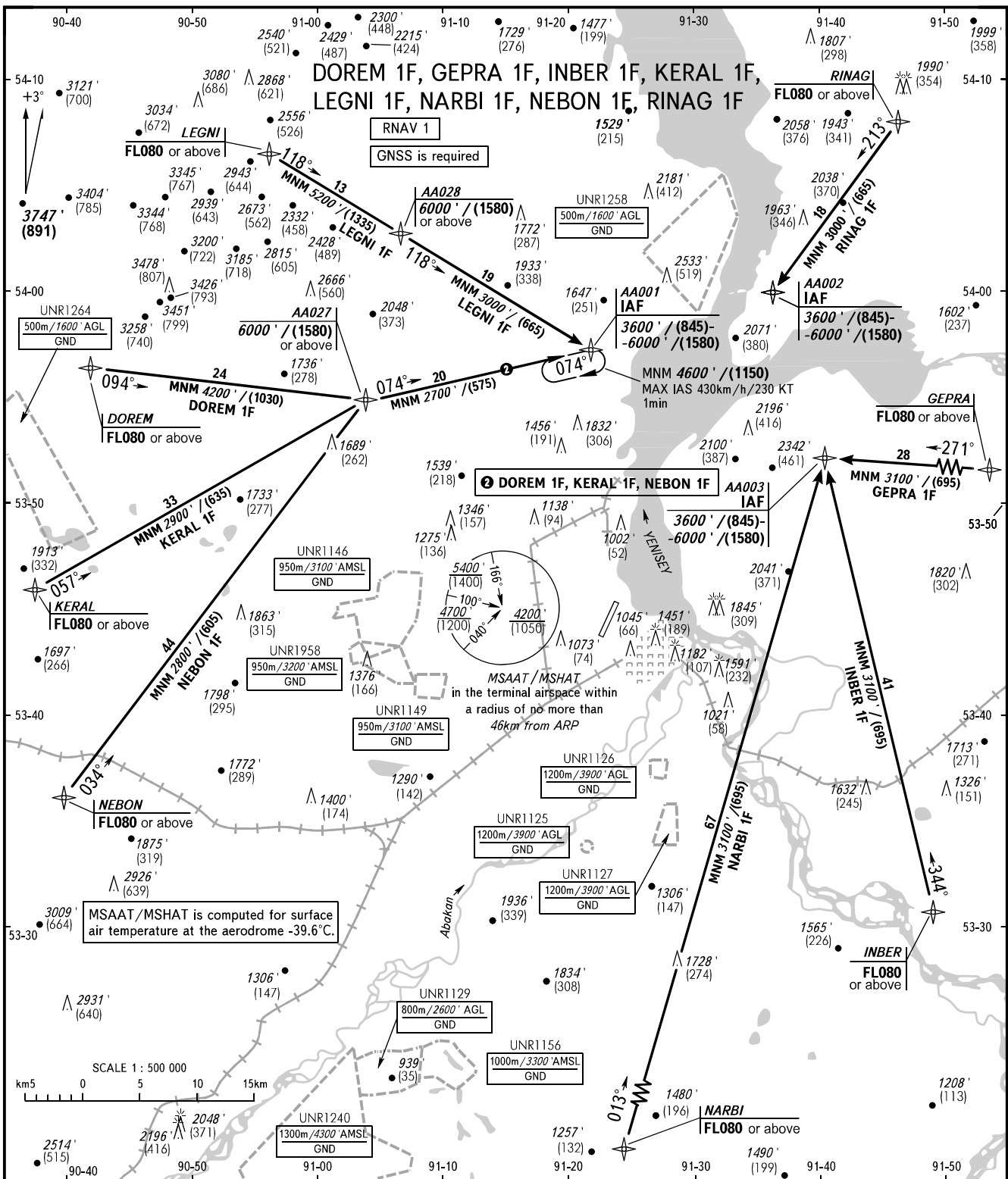
STANDARD ARRIVAL CHART
INSTRUMENT (STAR) - ICAO

ABAKAN, RUSSIA

ABAKAN

RNAV RWY 20

TRANSITION LEVEL : 1



<p>RADAR START 134.300 122.000</p>	<p>1 TRANSITION LEVEL:</p> <ul style="list-style-type: none"> - FL070 when QNH is 1013 hPa (760mm mercury column) or above; - FL080 when QNH is 977 hPa (733mm mercury column) or above, but less than 1013 hPa (760mm mercury column); - FL090 when QNH is less than 977 hPa (733mm mercury column).
<p>BEARINGS AND TRACKS ARE MAGNETIC ALTITUDES IN FEET HEIGHTS IN METRES ELEVATIONS IN FEET AND METRES DISTANCES IN KILOMETRES</p>	<p>Alt set: - QNH (QFE on req); - hPa (mm on req).</p>