

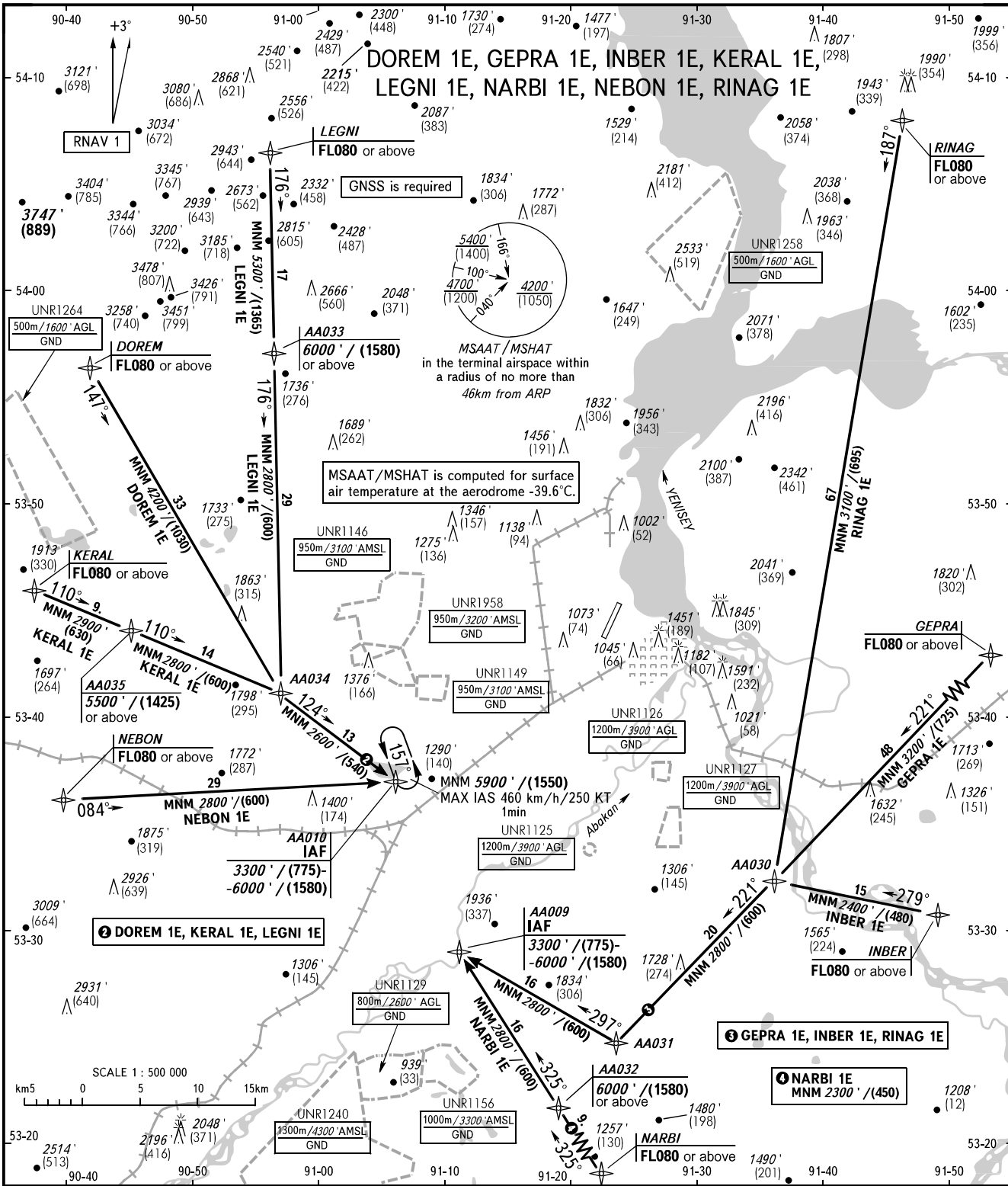
STANDARD ARRIVAL CHART  
INSTRUMENT (STAR) - ICAO

ABAKAN, RUSSIA

ABAKAN

RNAV RWY 02

TRANSITION LEVEL : 1



RADAR START 134.300  
122.000

- 1** TRANSITION LEVEL:
- FL070 when QNH is 1013 hPa (760mm mercury column) or above;
  - FL080 when QNH is 977 hPa (733mm mercury column) or above, but less than 1013 hPa (760mm mercury column);
  - FL090 when QNH is less than 977 hPa (733mm mercury column).

BEARINGS AND TRACKS ARE MAGNETIC  
ALTITUDES IN FEET  
HEIGHTS IN METRES  
ELEVATIONS IN FEET AND METRES  
DISTANCES IN KILOMETRES

Alt set: - QNH (QFE on req);  
- hPa (mm on req).