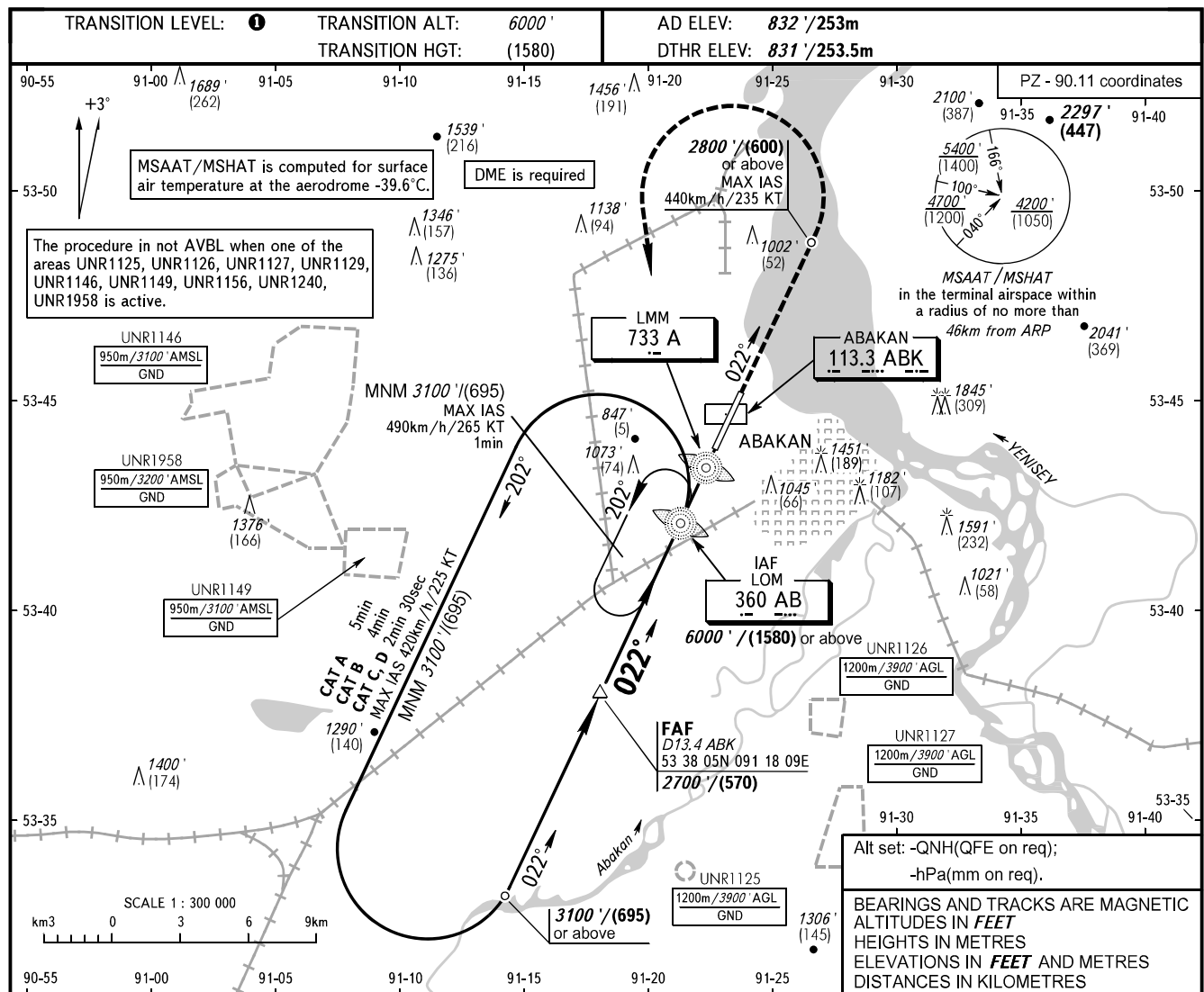


**INSTRUMENT
APPROACH
CHART - ICAO**

**ABAKAN, RUSSIA
ABAKAN
NDB X RWY 02**

RADAR	134.300
START	122.000

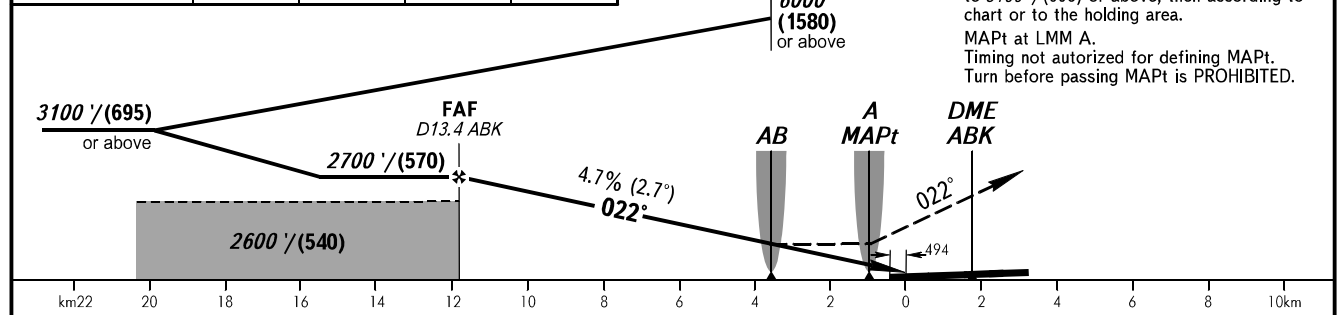


DME ABK	12.0	10.0	8.0	6.0
ALTITUDE/HEIGHT	2480'/(505)	2170'/(410)	1870'/(320)	1560'/(225)

Alt set: -QNH(QFE on req);
-hPa(mm on req).

BEARINGS AND TRACKS ARE MAGNETIC
ALTITUDES IN FEET
HEIGHTS IN METRES
ELEVATIONS IN FEET AND METRES
DISTANCES IN KILOMETRES

MISSED APPROACH
Climb on track 022° to 2800'/(600) or above, then turn LEFT to LOM AB climbing to 3100'/(695) or above, then according to chart or to the holding area.
MAPt at LMM A.
Timing not authorized for defining MAPt.
Turn before passing MAPt is PROHIBITED.



OCA(H)	A	B	C	D				
Straight-in Approach	1290'/(460') (140)	1290'/(460') (140)	1290'/(460') (140)	1290'/(460') (140)				
Circling	1310'/(480') (150)	1750'/(920') (280)	1850'/(1020') (310)	2340'/(1510') (460)				
GROUND SPEED	km/h	150	180	210	240	270	300	330
	kt	81	97	113	130	146	162	178
RATE OF DESCENT	m/s	2.0	2.4	2.7	3.1	3.5	3.9	4.3
	ft/min	385	463	540	617	694	771	848

TRANSITION LEVEL:

- FL070 when QNH is 1013 hPa (760mm mercury column) or above;
- FL080 when QNH is 977 hPa (733mm mercury column) or above, but less than 1013 hPa (760mm mercury column);
- FL090 when QNH is less than 977 hPa (733mm mercury column).