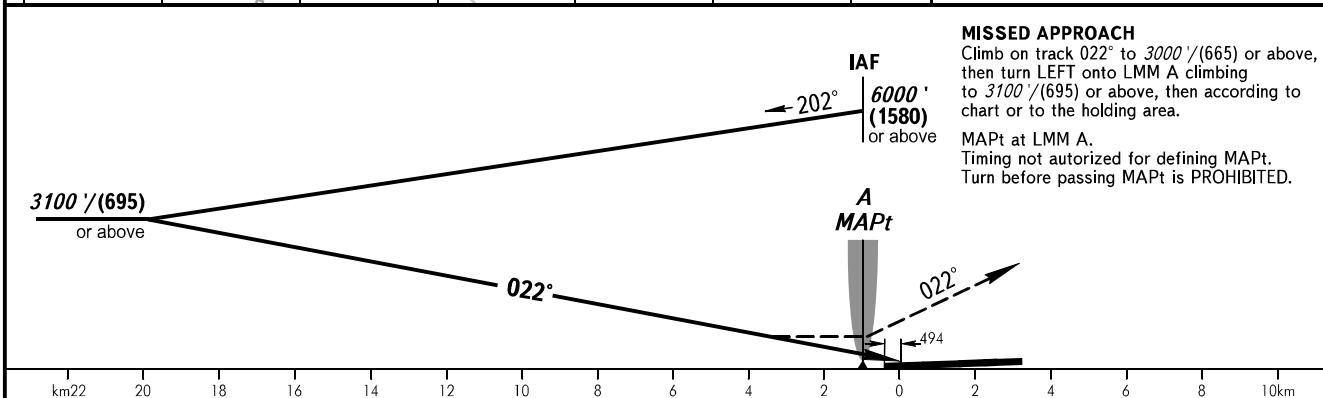
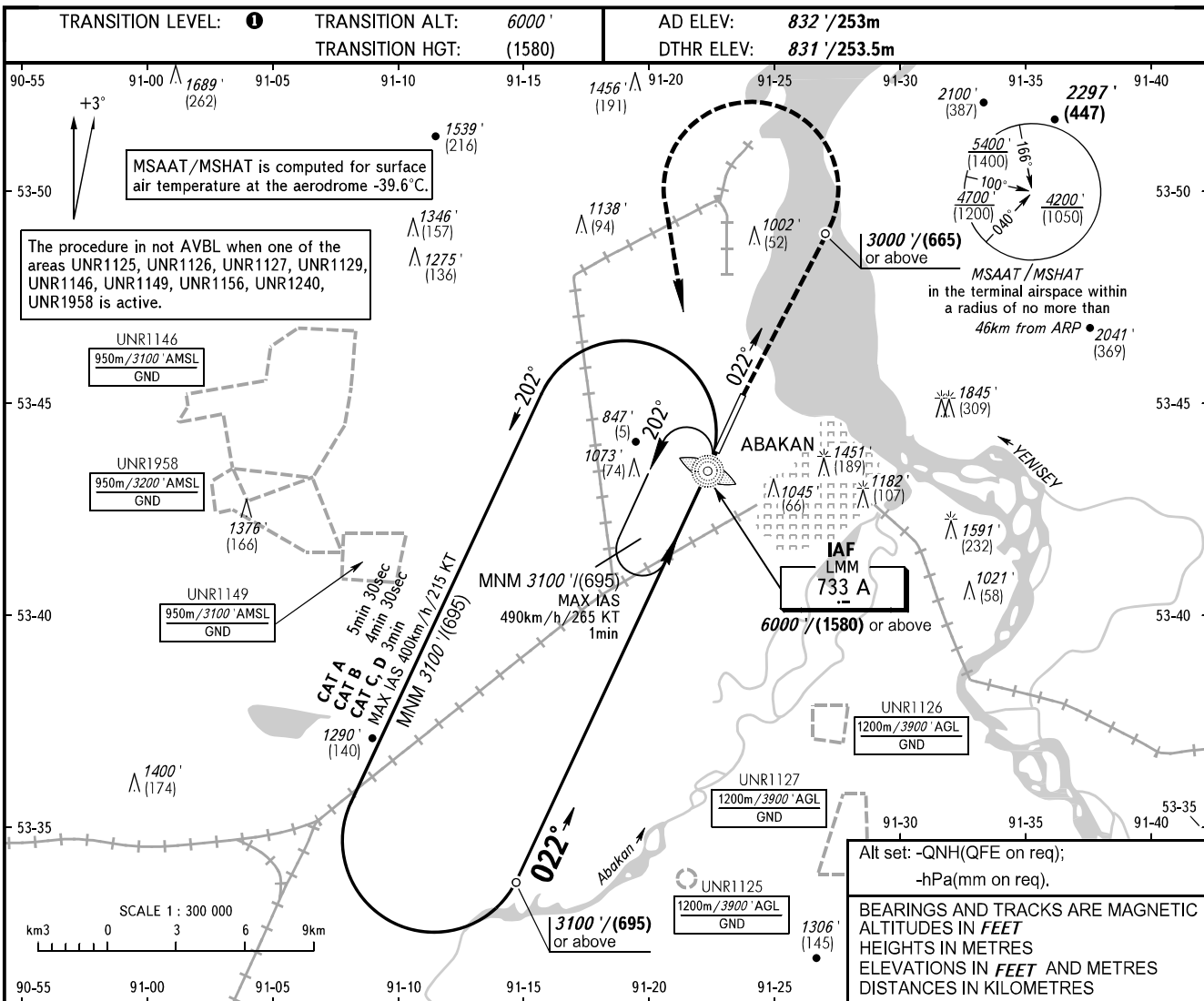


**INSTRUMENT  
APPROACH  
CHART - ICAO**

RADAR **134.300**  
START **122.000**

**ABAKAN, RUSSIA**  
ABAKAN  
NDB Y RWY 02



OCA(H)	A	B	C	D
Straight-in Approach	2360' / (1530') (470)	2360' / (1530') (470)	2360' / (1530') (470)	2360' / (1530') (470)
Circling	2360' / (1530') (470)	2360' / (1530') (470)	2360' / (1530') (470)	2360' / (1530') (470)

① **TRANSITION LEVEL:**  
- FL070 when QNH is 1013 hPa (760mm mercury column) or above;  
- FL080 when QNH is 977 hPa (733mm mercury column) or above, but less than 1013 hPa (760mm mercury column);  
- FL090 when QNH is less than 977 hPa (733mm mercury column).

CHANGE: New chart