

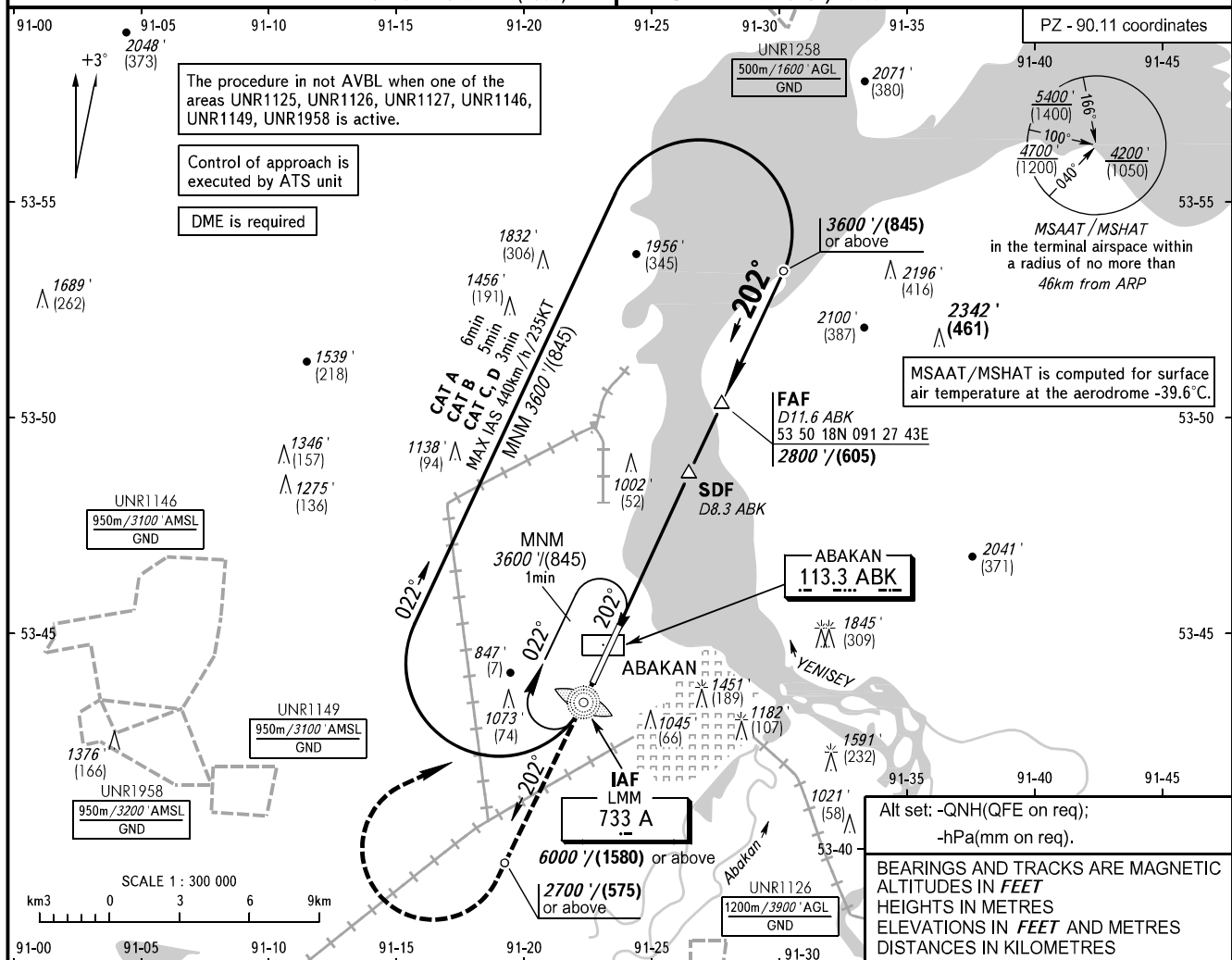
**INSTRUMENT  
APPROACH  
CHART - ICAO**

**ABAKAN, RUSSIA  
ABAKAN  
NDB RWY 20**

RADAR 134.300  
START 122.000

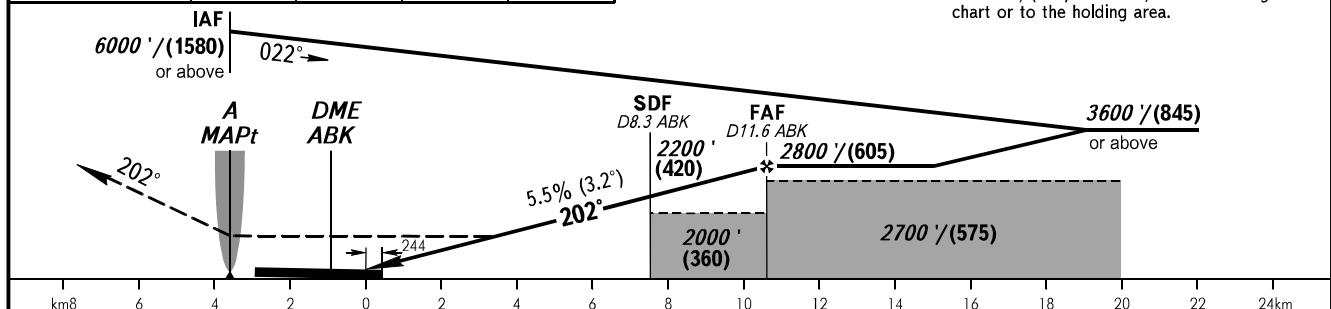
TRANSITION LEVEL: **1**      TRANSITION ALT: 6000'  
TRANSITION HGT: (1580)

AD ELEV: 832' / 253m  
DTHR ELEV: 825' / 251.5m



DME ABK	4.0	6.0	8.0	10.0
ALTITUDE/HEIGHT	1430' / (185)	1790' / (295)	2150' / (405)	2510' / (515)

**MISSED APPROACH**  
Climb on track 202° to 2700' / (575) or above, then turn RIGHT to LMM A climbing to 3600' / (845) or above, then according to chart or to the holding area.



OCA(H)		A	B	C	D			
Straight-in Approach	With SDF	1300' (480') (145)	1300' (480') (145)	1300' (480') (145)	1300' (480') (145)			
	WO SDF	2000' (1170') (360)	2000' (1170') (360)	2000' (1170') (360)	2000' (1170') (360)			
Circling		2000' (1170') (360)	2000' (1170') (360)	2000' (1170') (360)	2340' (1510') (460)			
GROUND SPEED	km/h	150	180	210	240	270	300	330
	kt	81	97	113	130	146	162	178
RATE OF DESCENT	m/s	2.3	2.8	3.2	3.7	4.1	4.6	5.2
	ft/min	451	541	632	722	812	902	992

**TRANSITION LEVEL:**  
- FLO70 when QNH is 1013 hPa (760mm mercury column) or above;  
- FLO80 when QNH is 977 hPa (733mm mercury column) or above, but less than 1013 hPa (760mm mercury column);  
- FLO90 when QNH is less than 977 hPa (733mm mercury column).

**WARNING**  
1. MAPt at LMM A.  
2. Timing not authorized for defining MAPt.  
3. Turn before passing MAPt is PROHIBITED.