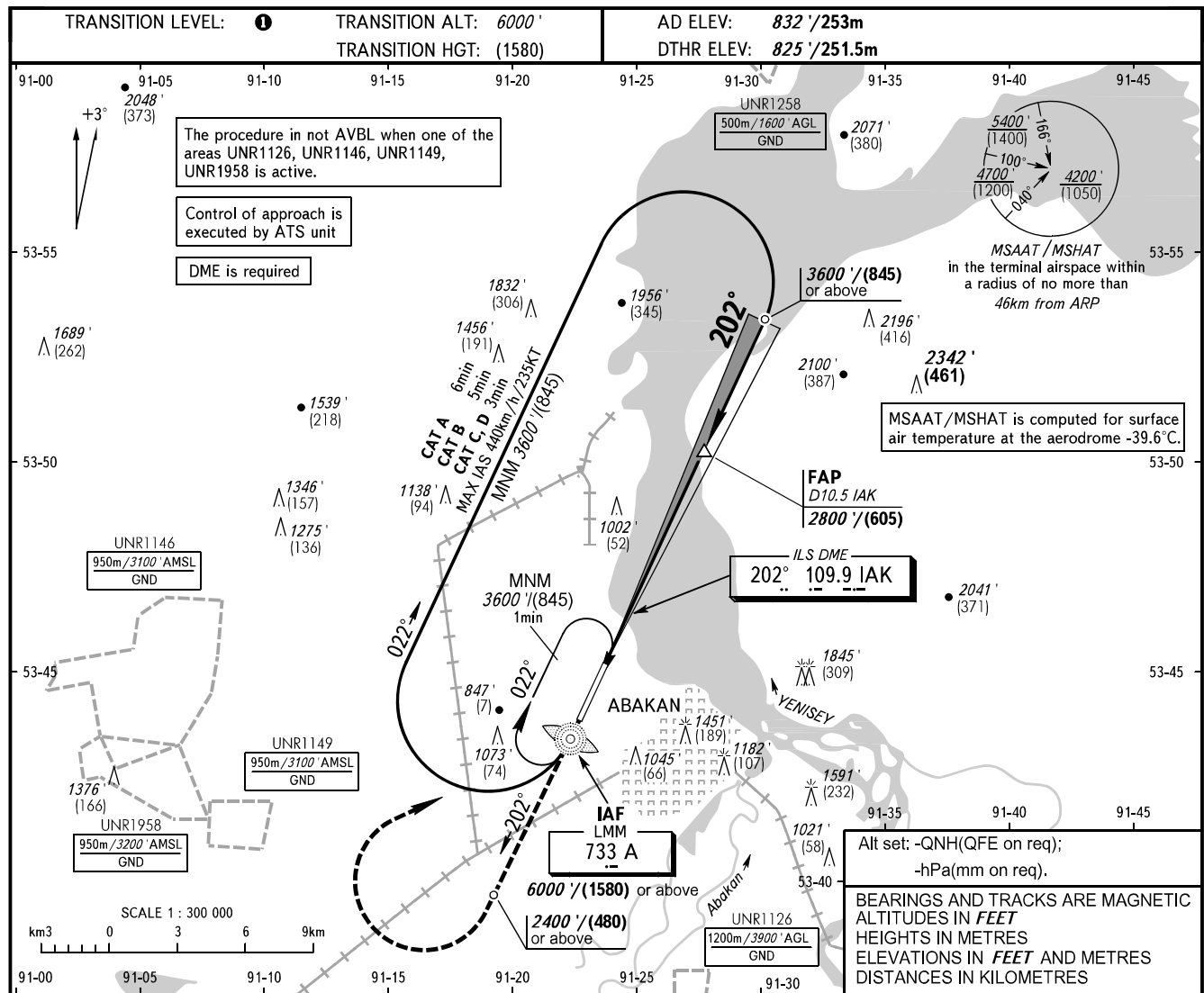


**INSTRUMENT
APPROACH
CHART - ICAO**

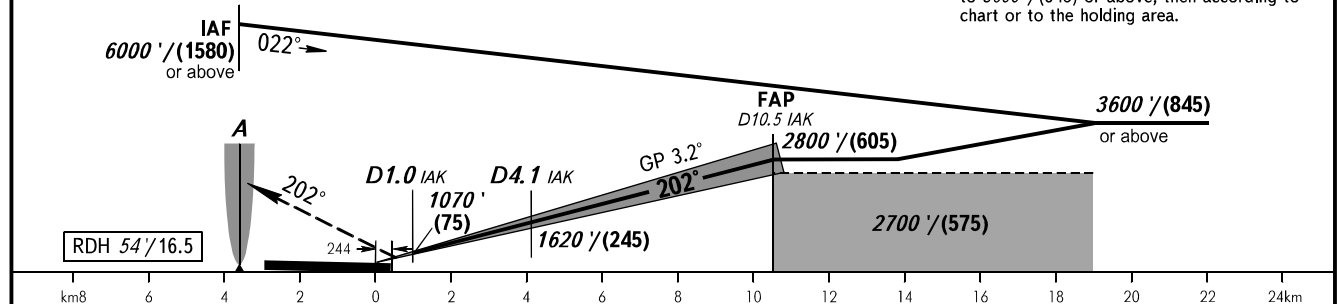
**ABAKAN, RUSSIA
ABAKAN
ILS Y RWY 20**

RADAR	134.300
START	122.000



DME IAK	2.0	4.0	6.0	8.0	10.0
ALTITUDE/HEIGHT	1250' / (130)	1620' / (245)	1980' / (355)	2350' / (465)	2720' / (580)

MISSED APPROACH
Climb on track 202° to 2400' / (480) or above, turn RIGHT to LMM A climbing to 3600' / (845) or above, then according to chart or to the holding area.



OCA(H)		A	B	C	D			
Straight-in Approach	CAT I	1013' (188') (57)	1025' (200') (61)	1033' (208') (64)	1043' (218') (67)			
	Circling	1310' (480') (150)	1750' (920') (280)	1850' (1020') (310)	2340' (1510') (460)			
GROUND SPEED	km/h	150	180	210	240	270	300	330
	kt	81	97	113	130	146	162	178
RATE OF DESCENT	m/s	2.3	2.8	3.2	3.7	4.1	4.6	5.2
	ft/min	451	541	632	722	812	902	992

TRANSITION LEVEL:
- FL070 when QNH is 1013 hPa (760mm mercury column) or above;
- FL080 when QNH is 977 hPa (733mm mercury column) or above, but less than 1013 hPa (760mm mercury column);
- FL090 when QNH is less than 977 hPa (733mm mercury column).

WARNING
DME IAK reads zero at DTHR 20.