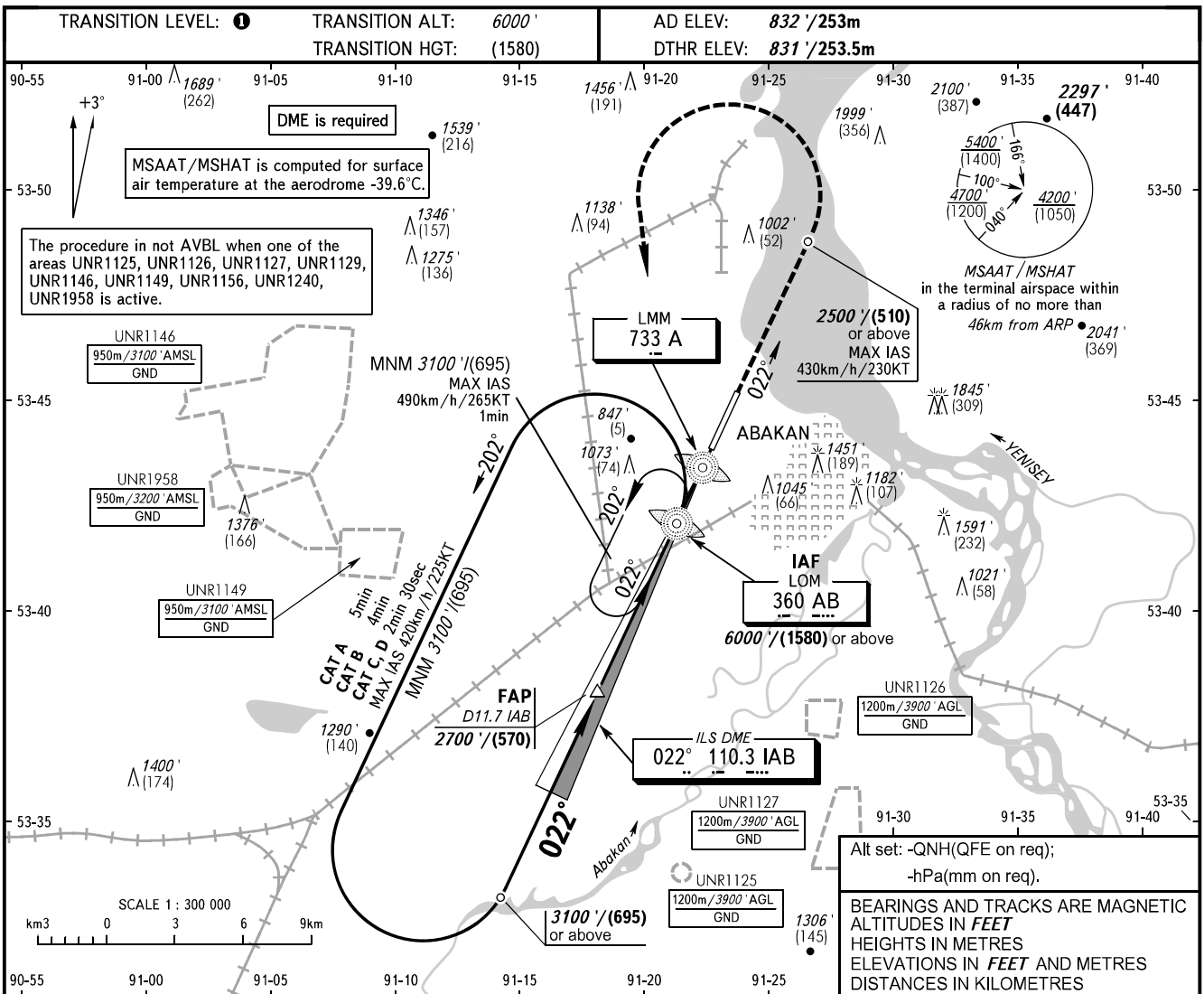


**INSTRUMENT  
APPROACH  
CHART - ICAO**

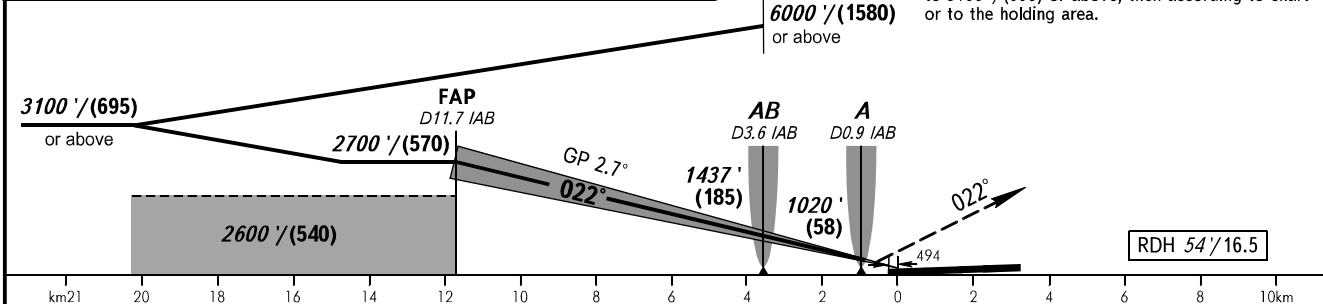
**ABAKAN, RUSSIA  
ABAKAN  
ILS Y CAT I RWY 02**

RADAR	134.300
START	122.000



DME IAB	11.5	10.0	8.0	6.0	4.0
ALTITUDE/HEIGHT	2670' / (560)	2440' / (490)	2130' / (395)	1820' / (300)	1510' / (205)

**MISSED APPROACH**  
Climb on track 022° to 2500' / (510) or above, then turn LEFT to LOM AB climbing to 3100' / (695) or above, then according to chart or to the holding area.



OCA(H)		A	B	C	D	① TRANSITION LEVEL: - FL070 when QNH is 1013 hPa (760mm mercury column) or above; - FL080 when QNH is 977 hPa (733mm mercury column) or above, but less than 1013 hPa (760mm mercury column); - FL090 when QNH is less than 977 hPa (733mm mercury column).		
Straight-in Approach	<b>CAT I</b>	998' (167') (51)	1011' (180') (55)	1019' (188') (57)	1029' (198') (61)		<b>WARNING</b> DME IAB reads zero at DTHR 02.	
Circling		1310' (480') (150)	1750' (920') (280)	1850' (1020') (310)	2340' (1510') (460)			
GROUND SPEED	km/h	150	180	210	240	270	300	330
	kt	81	97	113	130	146	162	178
RATE OF DESCENT	m/s	2.0	2.4	2.7	3.1	3.5	3.9	4.3
	ft/min	385	463	540	617	694	771	848

CHANGE: FAP