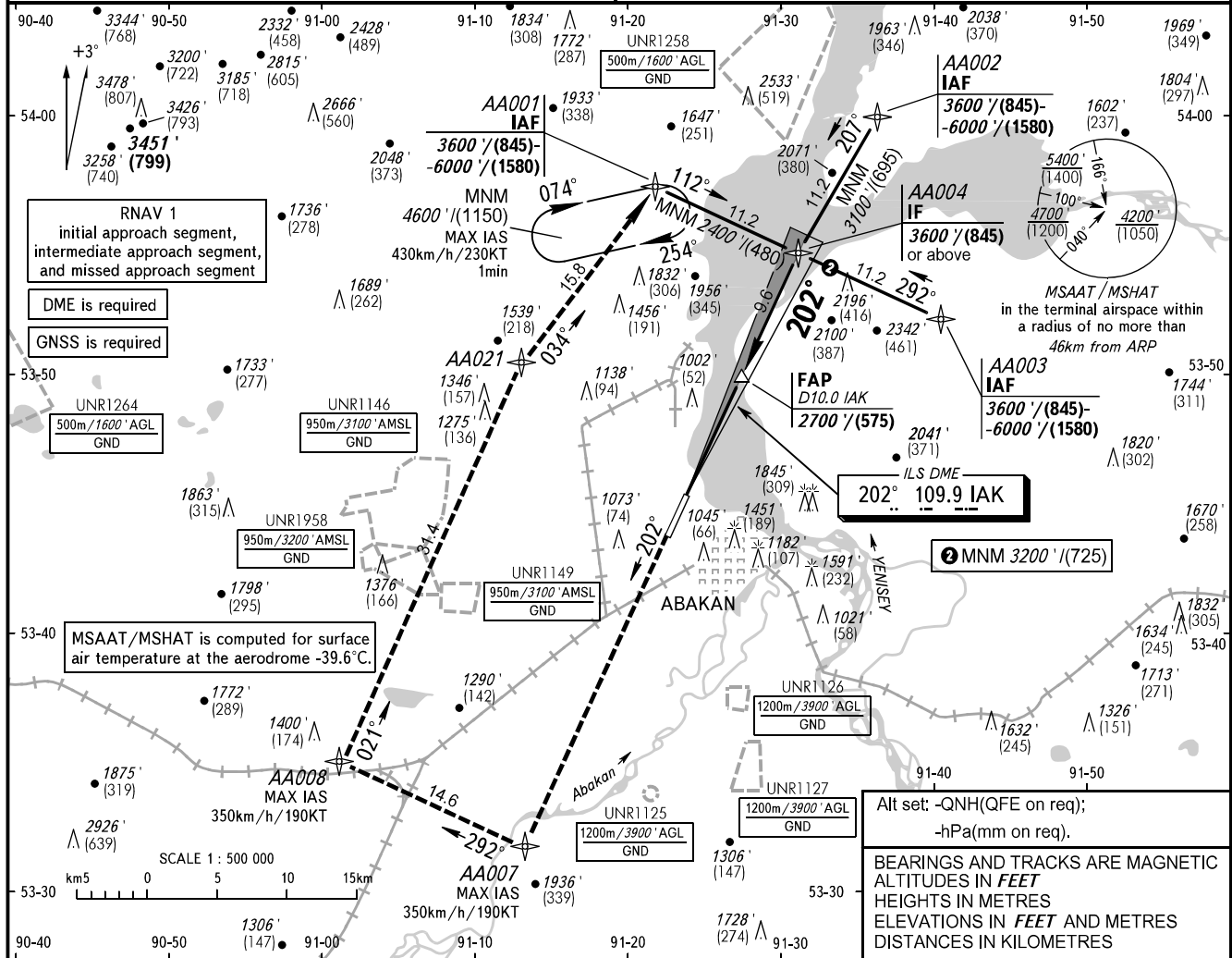


INSTRUMENT
APPROACH
CHART - ICAO

ABAKAN, RUSSIA
ABAKAN
ILS Z RWY 20

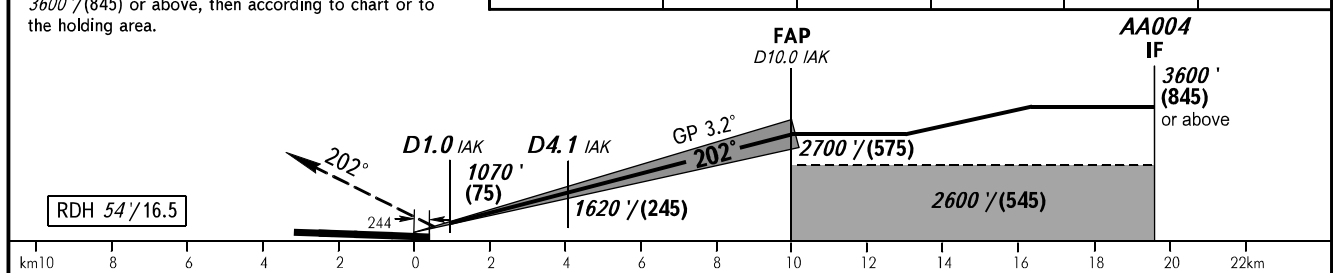
RADAR 134.300
START 122.000

TRANSITION LEVEL: 1
TRANSITION ALT: 6000'
TRANSITION HGT: (1580)
AD ELEV: 832' / 253m
DTHR ELEV: 825' / 251.5m



MISSED APPROACH
Climb on track 202° to AA007, turn RIGHT to AA008, proceed to AA021, proceed to AA001 climbing to 3600'/(845) or above, then according to chart or to the holding area.

DME IAK	2.0	4.0	6.0	8.0	9.0
ALTITUDE/HEIGHT	1250'/(130)	1620'/(245)	1990'/(355)	2350'/(465)	2530'/(520)



OCA(H)	A	B	C	D
Straight-in Approach	CAT I 1013' (188') (57)	1025' (200') (61)	1033' (208') (64)	1043' (218') (67)
Circling	1310' (480') (150)	1750' (920') (280)	1850' (1020') (310)	2340' (1510') (460)
GROUND SPEED	km/h	150	180	210
	kt	81	97	113
RATE OF DESCENT	m/s	2.3	2.8	3.2
	ft/min	451	541	632

1 TRANSITION LEVEL:
- FLO70 when QNH is 1013 hPa (760mm mercury column) or above;
- FLO80 when QNH is 977 hPa (733mm mercury column) or above, but less than 1013 hPa (760mm mercury column);
- FLO90 when QNH is less than 977 hPa (733mm mercury column).

WARNING
DME IAK reads zero at DTHR 20.