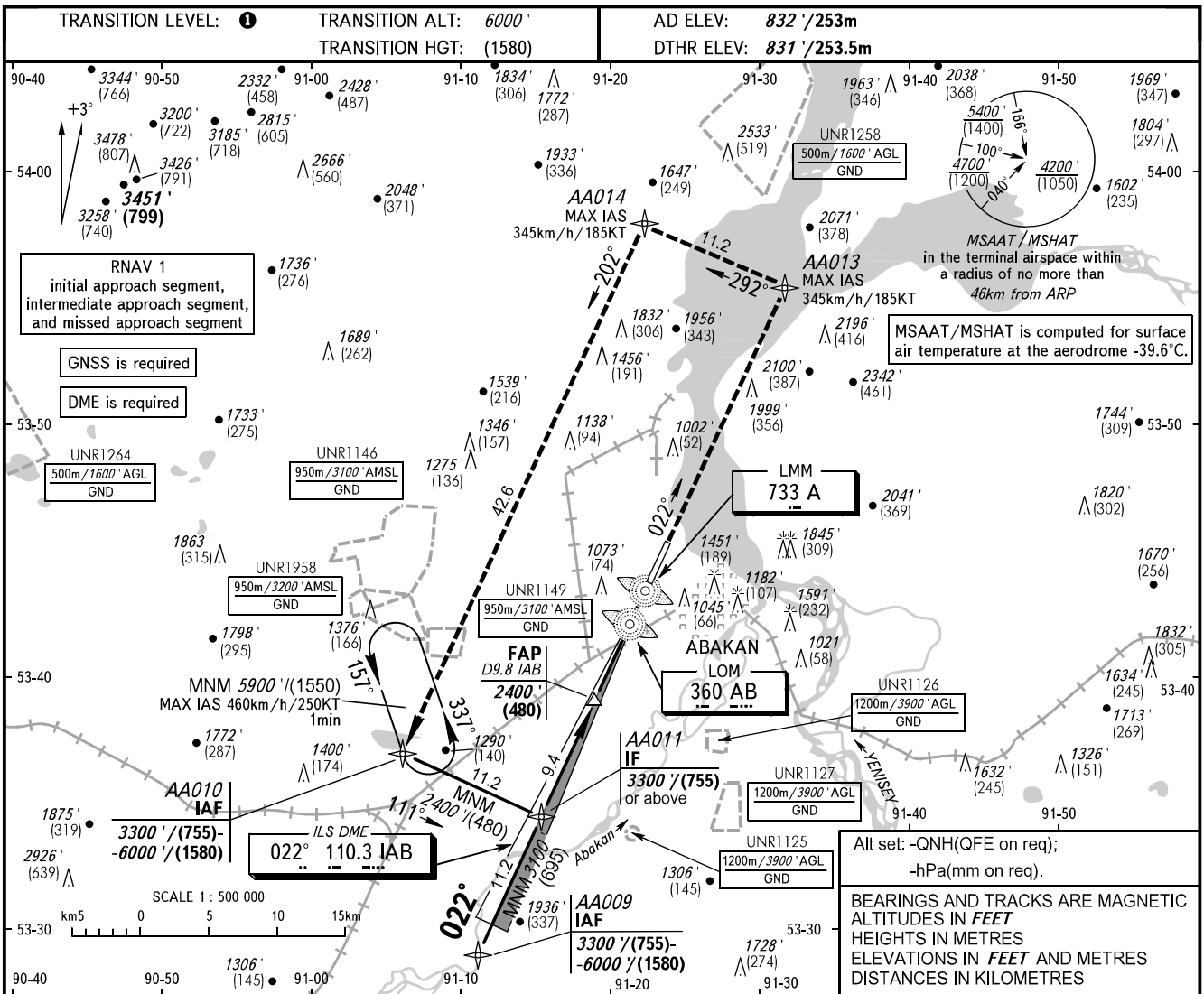


**INSTRUMENT
APPROACH
CHART - ICAO**

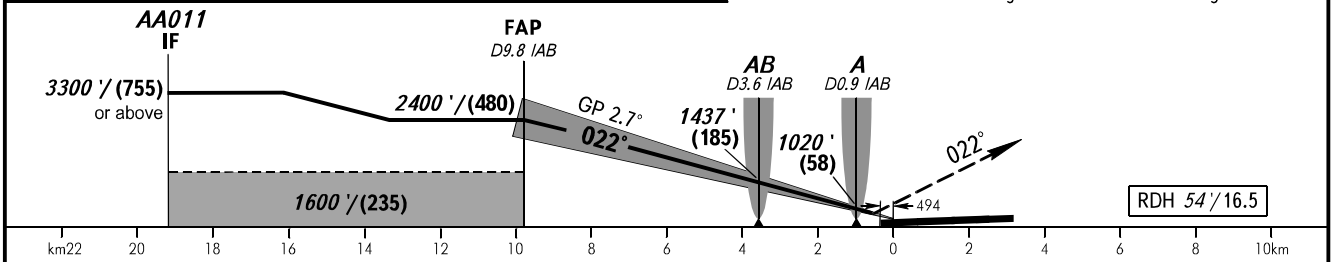
RADAR **134.300**
START **122.000**

ABAKAN, RUSSIA
ABAKAN
ILS Z CAT I RWY 02



DME IAB	9.0	8.0	6.0	4.0
ALTITUDE/HEIGHT	2350'/(450)	2130'/(395)	1820'/(300)	1510'/(205)

MISSSED APPROACH
Climb on track 022° to AA013, turn LEFT to AA014, proceed to AA010 climbing to 3300'/(755) or above, then according to chart or to the holding area.



OCA(H)		A	B	C	D
Straight-in Approach	CAT I	998' (167') (51)	1011' (180') (55)	1019' (188') (57)	1029' (198') (61)
		1310' (480') (150)	1750' (920') (280)	1850' (1020') (310)	2340' (1510') (460)

1 TRANSITION LEVEL:
- FLO70 when QNH is 1013 hPa (760mm mercury column) or above;
- FLO80 when QNH is 977 hPa (733mm mercury column) or above, but less than 1013 hPa (760mm mercury column);
- FLO90 when QNH is less than 977 hPa (733mm mercury column).
WARNING
DME IAB reads zero at DTHR 02.

GROUND SPEED	km/h	150	180	210	240	270	300	330
	kt	81	97	113	130	146	162	178
RATE OF DESCENT	m/s	2.0	2.4	2.7	3.1	3.5	3.9	4.3
	ft/min	385	463	540	617	694	771	848