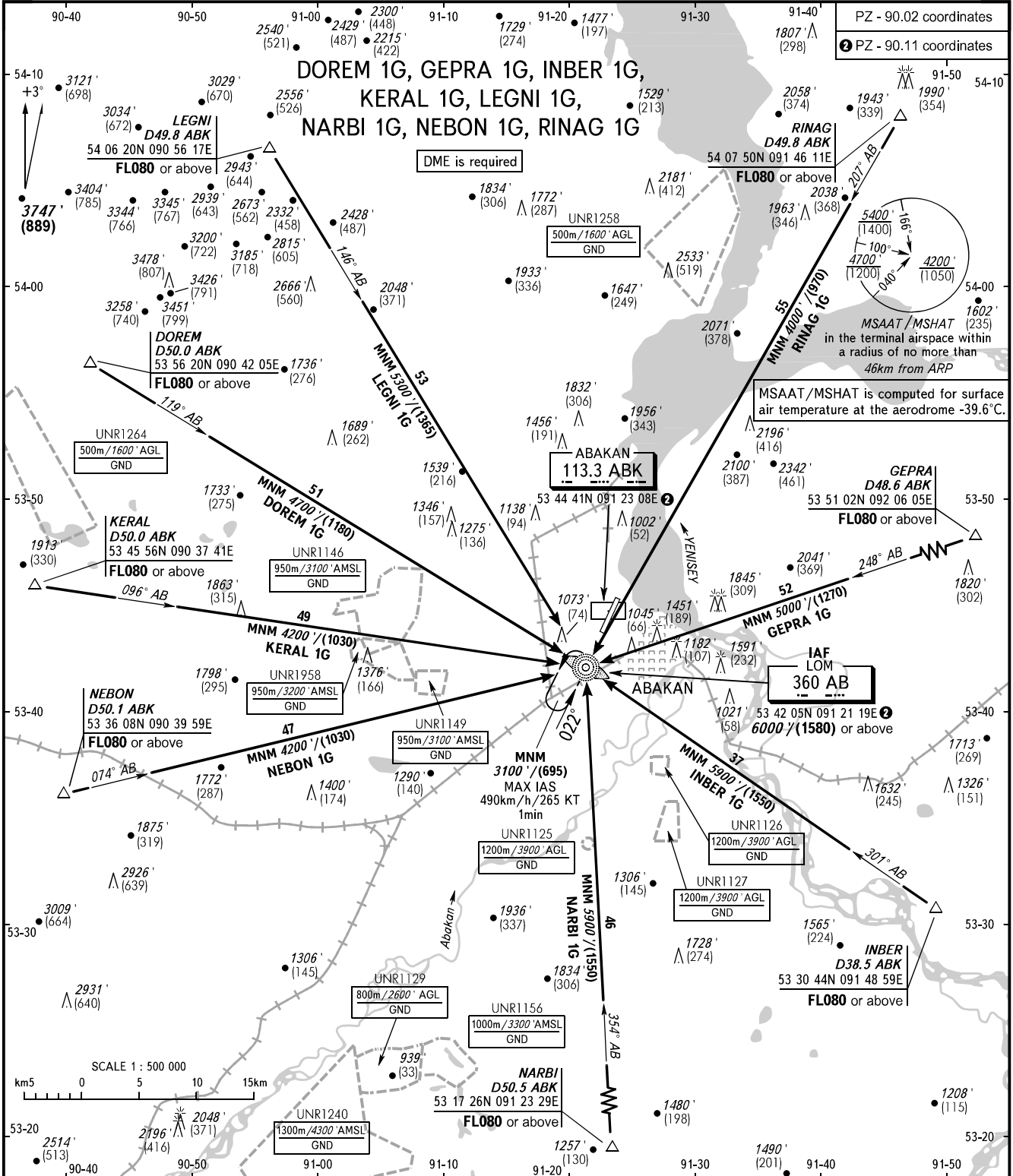


STANDARD ARRIVAL CHART
INSTRUMENT (STAR) - ICAO

ABAKAN, RUSSIA
ABAKAN
RWY 02

TRANSITION LEVEL : **1**



PZ - 90.02 coordinates
PZ - 90.11 coordinates

MSAAT / MSHAT is computed for surface air temperature at the aerodrome -39.6°C.

1 TRANSITION LEVEL:
 - FL070 when QNH is 1013 hPa (760mm mercury column) or above;
 - FL080 when QNH is 977 hPa (733mm mercury column) or above, but less than 1013 hPa (760mm mercury column);
 - FL090 when QNH is less than 977 hPa (733mm mercury column).

BEARINGS AND TRACKS ARE MAGNETIC
 ALTITUDES IN FEET
 HEIGHTS IN METRES
 ELEVATIONS IN FEET AND METRES
 DISTANCES IN KILOMETRES

Alt set: - QNH (QFE on req);
 - hPa (mm on req).

CHANGE: New chart