

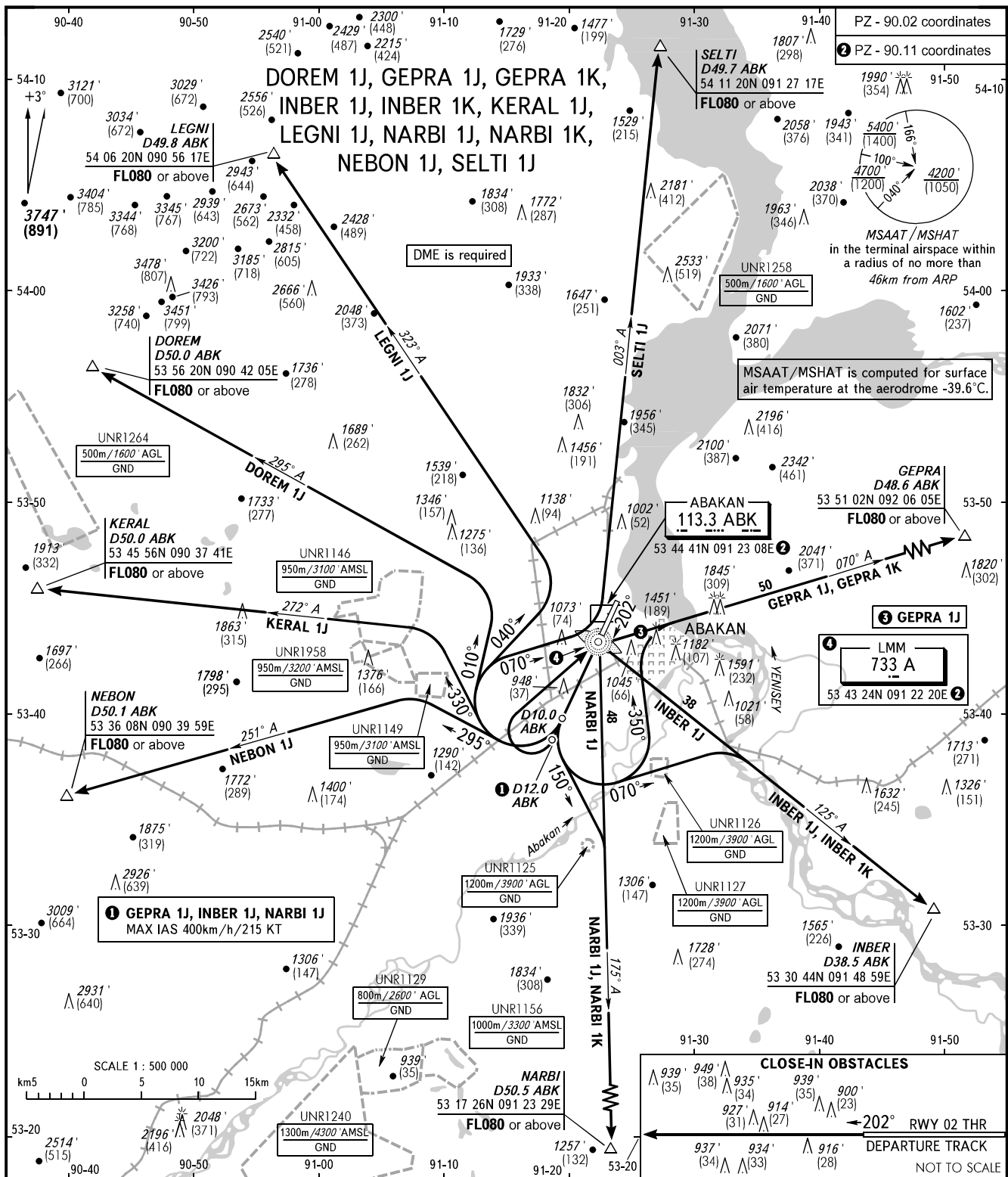
STANDARD DEPARTURE CHART
INSTRUMENT (SID) - ICAO

TRANSITION ALTITUDE : 6000'
TRANSITION HEIGHT : (1580)

ABAKAN, RUSSIA

ABAKAN

RWY 20



START RADAR 122.000
134.300

WARNING:

- The minimum climb gradients required due to the airspace structure:
 - 5.2% up to 3600' (845) for DOREM 1J, GEPRAs 1J, INBER 1J, KERAL 1J, LEGNI 1J, NARBI 1J, NEBON 1J, SELTI 1J;
 - 4.4% up to FL080 for NARBI 1K;
 - 4.2% up to FL080 for INBER 1K.
- GEPRAs 1K, INBER 1K are not AVBL when UNR1125, UNR1126, UNR1127 are active.
- NARBI 1K is not AVBL when UNR1125 is active.

BEARINGS AND TRACKS ARE MAGNETIC ALTITUDES IN FEET HEIGHTS IN METRES ELEVATIONS IN FEET AND METRES DISTANCES IN KILOMETRES

Alt set: - QNH (QFE on req);
- hPa (mm on req).