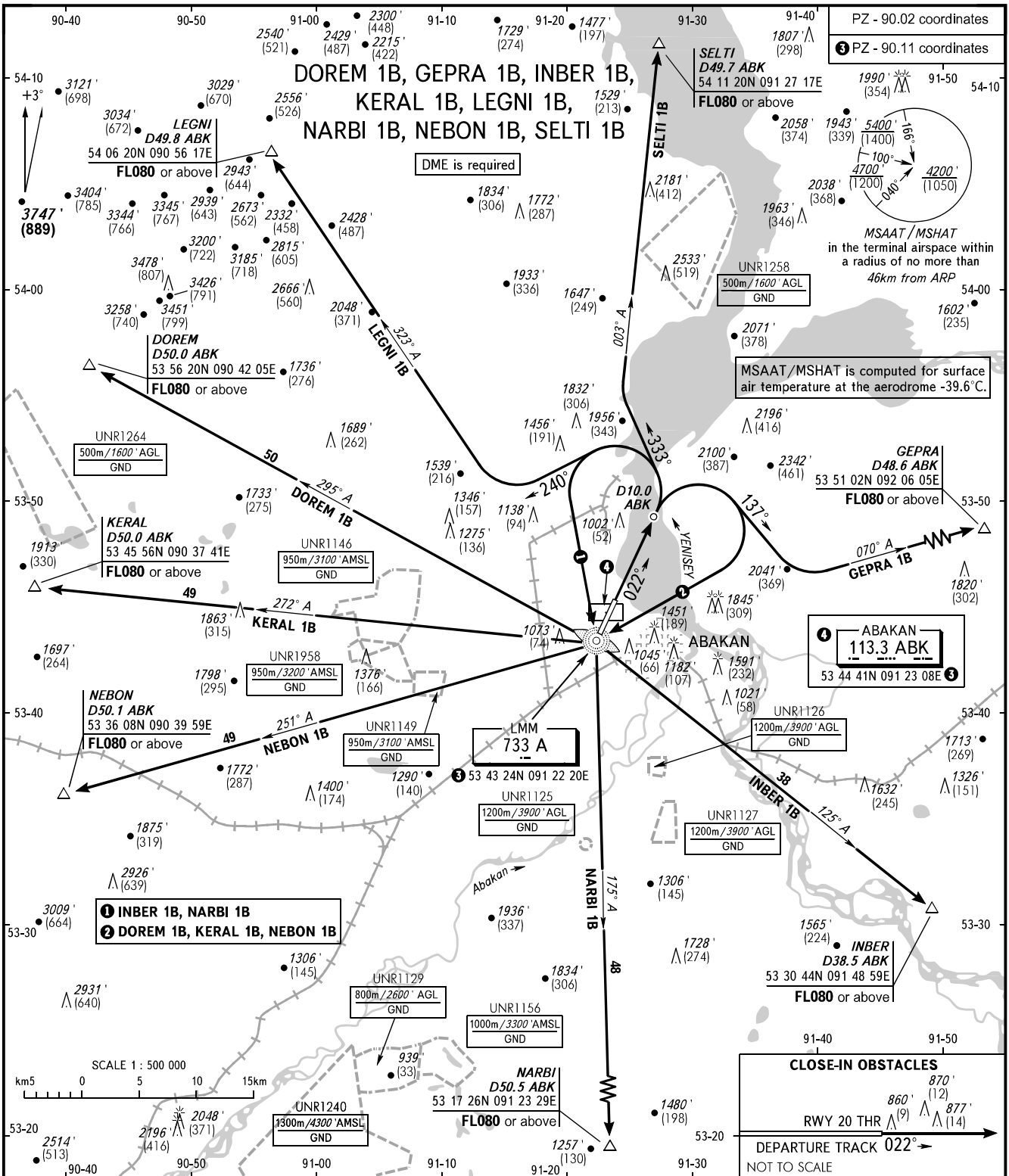


STANDARD DEPARTURE CHART  
INSTRUMENT (SID) - ICAO

TRANSITION ALTITUDE : **6000'**  
TRANSITION HEIGHT : **(1580)**

**ABAKAN, RUSSIA**  
ABAKAN  
RWY 02



START **122.000**  
RADAR **134.300**

**WARNING:**

- The minimum climb gradients required due to obstacles: 3.8% up to 2400'/(480).
- The minimum climb gradients required due to the airspace structure:
  - 5.0% up to 5800'/(1515) for INBER 1B, NARBI 1B;
  - 3.8% up to FL080 for GEPRA 1B;
  - 4.4% up to FL080 for SELTI 1B.

BEARINGS AND TRACKS ARE MAGNETIC  
ALTITUDES IN **FEET**  
HEIGHTS IN METRES  
ELEVATIONS IN **FEET** AND METRES  
DISTANCES IN KILOMETRES

Alt set: - QNH (QFE on req);  
- hPa (mm on req).

CHANGE: New chart