

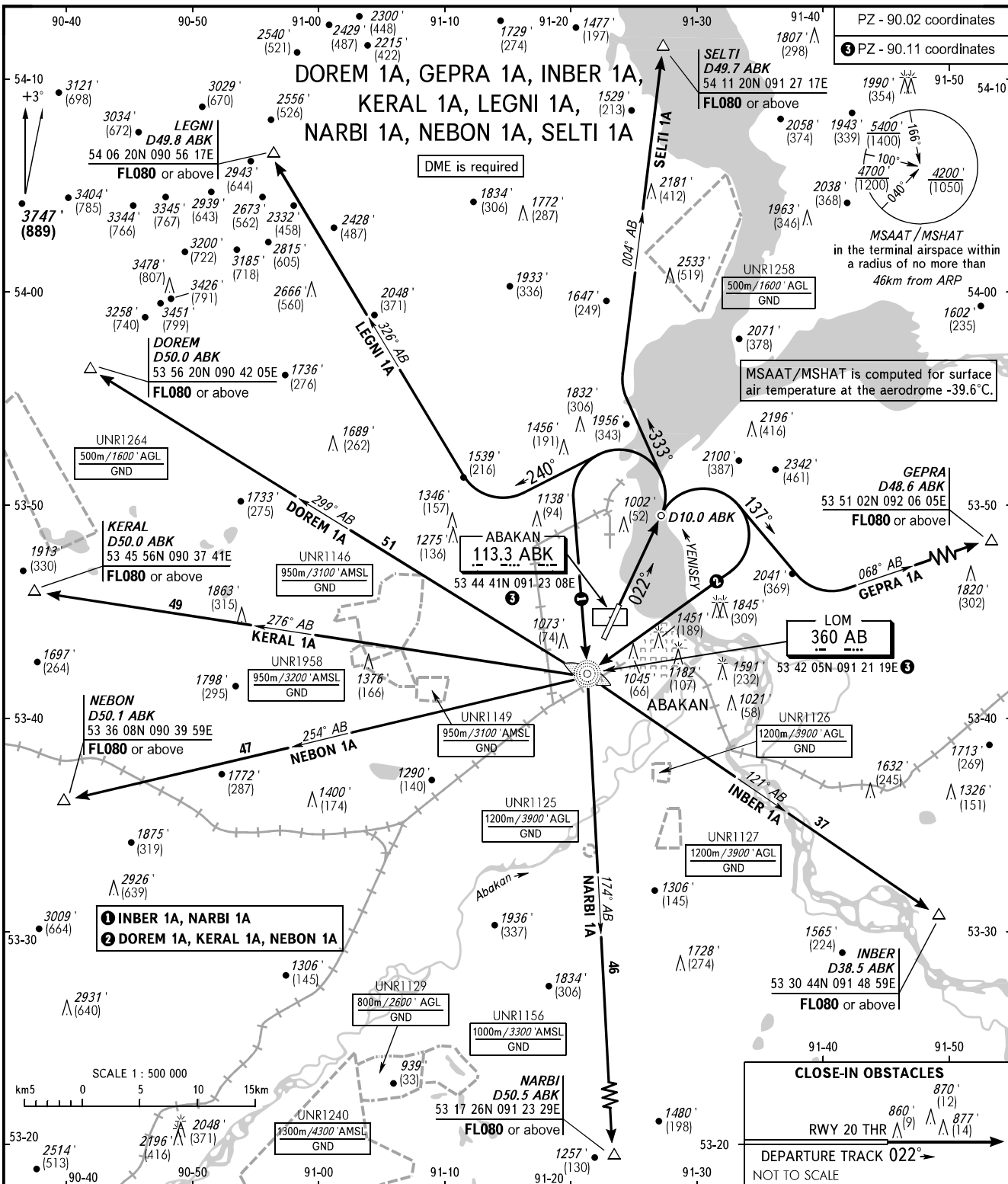
STANDARD DEPARTURE CHART  
INSTRUMENT (SID) - ICAO

TRANSITION ALTITUDE : 6000'  
TRANSITION HEIGHT : (1580)

ABAKAN, RUSSIA

ABAKAN

RWY 02



START RADAR 122.000  
134.300

BEARINGS AND TRACKS ARE MAGNETIC  
ALTITUDES IN FEET  
HEIGHTS IN METRES  
ELEVATIONS IN FEET AND METRES  
DISTANCES IN KILOMETRES

Alt set: - QNH (QFE on req);  
- hPa (mm on req).

**WARNING:**

- The minimum climb gradients required due to obstacles: 3.8% up to 2400'/(480).
- The minimum climb gradients required due to the airspace structure:
  - 5.0% up to 5800'/(1515) for INBER 1A, NARBI 1A;
  - 3.8% up to FL080 for GEPR 1A;
  - 4.4% up to FL080 for SELTI 1A.

**CLOSE-IN OBSTACLES**  
RWY 20 THR 860' (12), 870' (12), 877' (14)

DEPARTURE TRACK 022°  
NOT TO SCALE

CHANGE: New chart