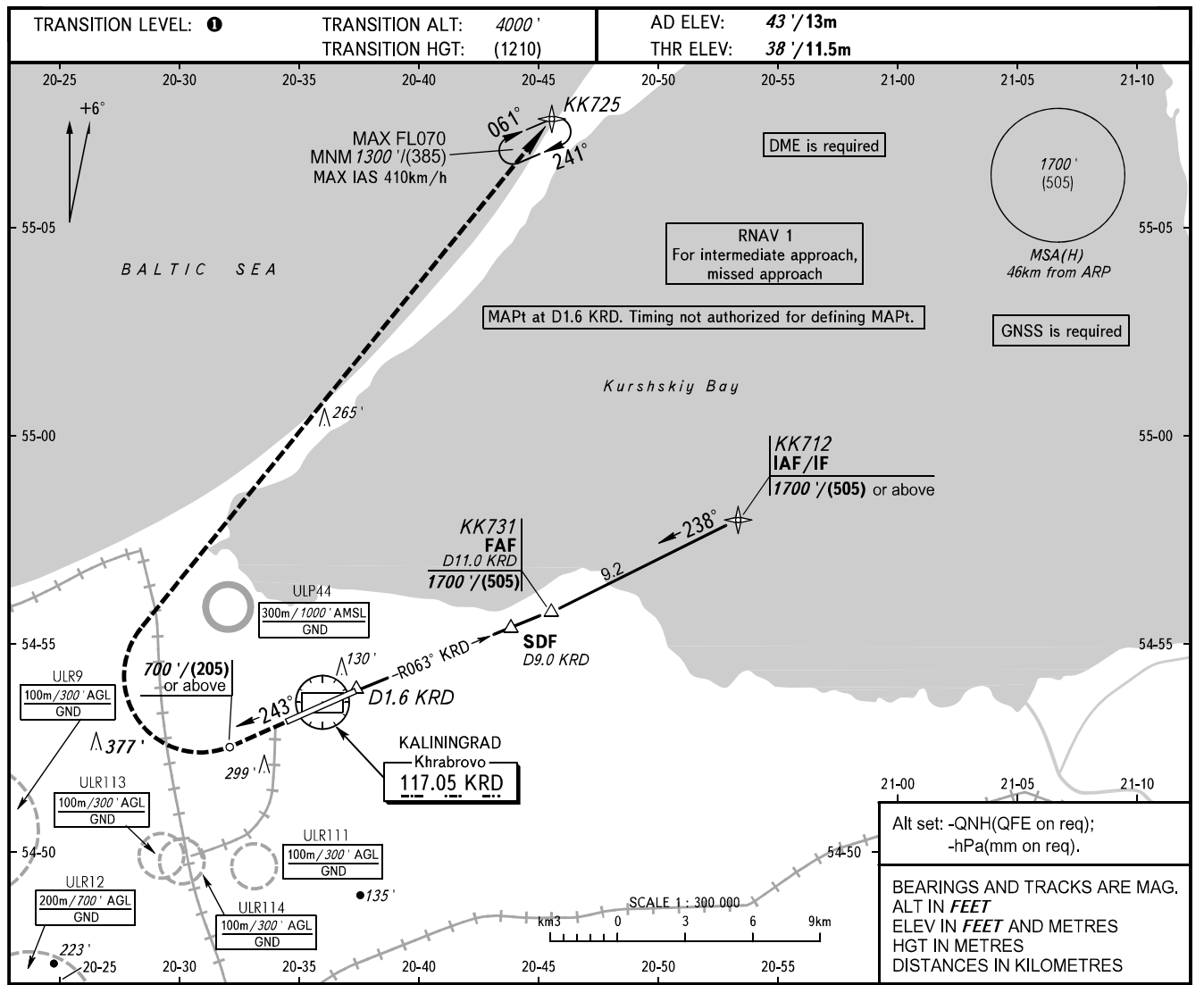


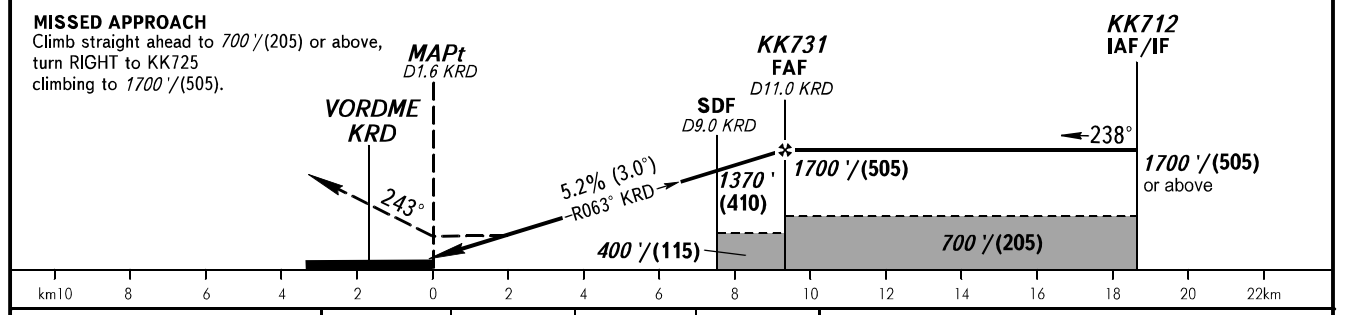
**INSTRUMENT
APPROACH
CHART - ICAO**

**KALININGRAD, RUSSIA
KHRABROVO
VOR X RWY 24**

TOWER **127.200**



DME KRd	4.0	6.0	8.0	10.0
ALTITUDE/HEIGHT	511'/(145)	855'/(250)	1199'/(355)	1543'/(460)



OCA(H)		A	B	C	D						
Straight-in Approach	With SDF	380' (340') (105)	380' (340') (105)	380' (340') (105)	380' (340') (105)						
	WO SDF	400' (360') (115)	400' (360') (115)	400' (360') (115)	400' (360') (115)						
Circling		600' (550') (170)	600' (550') (170)	700' (650') (205)	780' (730') (225)						
GROUND SPEED		km/h	150	180	210	240	270	300	330	360	390
RATE OF DESCENT		m/s	2.2	2.6	3.0	3.5	3.9	4.3	4.8	5.2	5.6
		ft/min	427	512	597	682	768	853	938	1024	1109

TRANSITION LEVEL:
 - FL050 when QNH is 1013 hPa (760mm mercury column) or above;
 - FL060 when QNH is 977 hPa (733mm mercury column) or above, but less than 1013 hPa (760mm mercury column);
 - FL070 when QNH is less than 977 hPa (733mm mercury column).
WARNING
 Final approach track is offset by 3° from the RWY centre line.