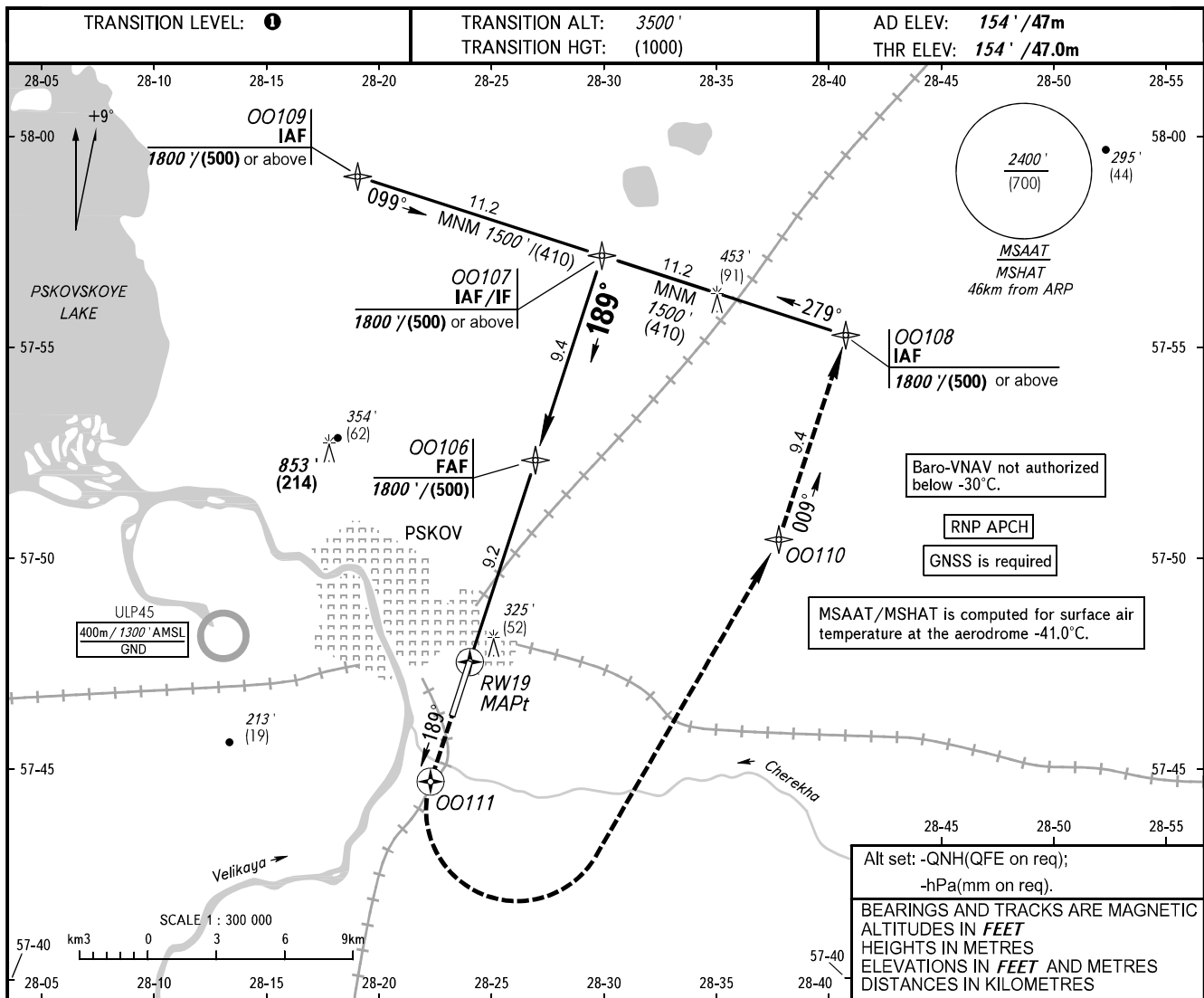


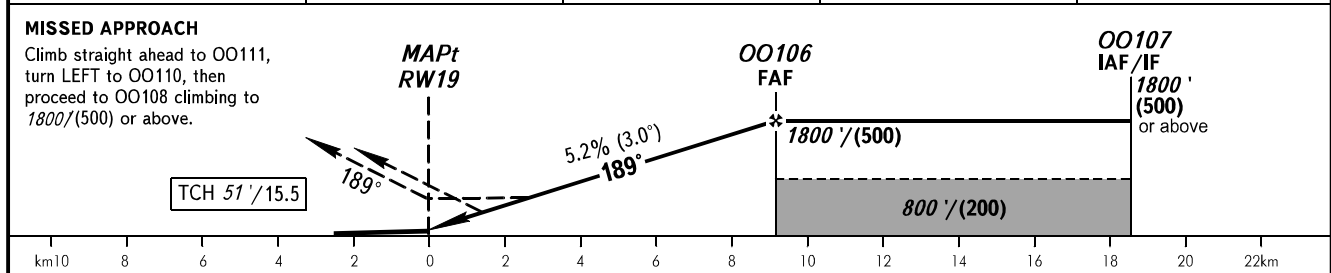
**INSTRUMENT
APPROACH
CHART - ICAO**

TOWER **122.000**

PSKOV, RUSSIA
PSKOV
RNP RWY 19



DIST to RW19	3.0	5.0	7.0	9.0
ALTITUDE/HEIGHT	719' (172)	1063' (277)	1406' (382)	1752' (487)



OCA(H)		A	B	C	D						
Straight-in	LNAV	560' (410') (125)	560' (410') (125)	560' (410') (125)	560' (410') (125)						
	LNAV/VNAV	451' (297') (91)	460' (307') (94)	470' (316') (97)	479' (325') (99)						
Circling		620' (470') (145)	650' (500') (150)	750' (600') (180)	850' (690') (210)						
GROUND SPEED		km/h	150	180	210	240	270	300	330	360	390
RATE OF DESCENT		m/s	2.2	2.6	3.1	3.5	3.9	4.4	4.8	5.2	5.7
		ft/min	427	512	597	682	768	853	938	1024	1109

TRANSITION LEVEL:

- FL050 when QNH is 996 hPa (747mm mercury column) or above;
- FL060 when QNH is 960 hPa (720mm mercury column) or above, but less than 996 hPa (747mm mercury column);
- FL070 when QNH is less than 960 hPa (720mm mercury column).

Visual manoeuvring west of AD is PROHIBITED.