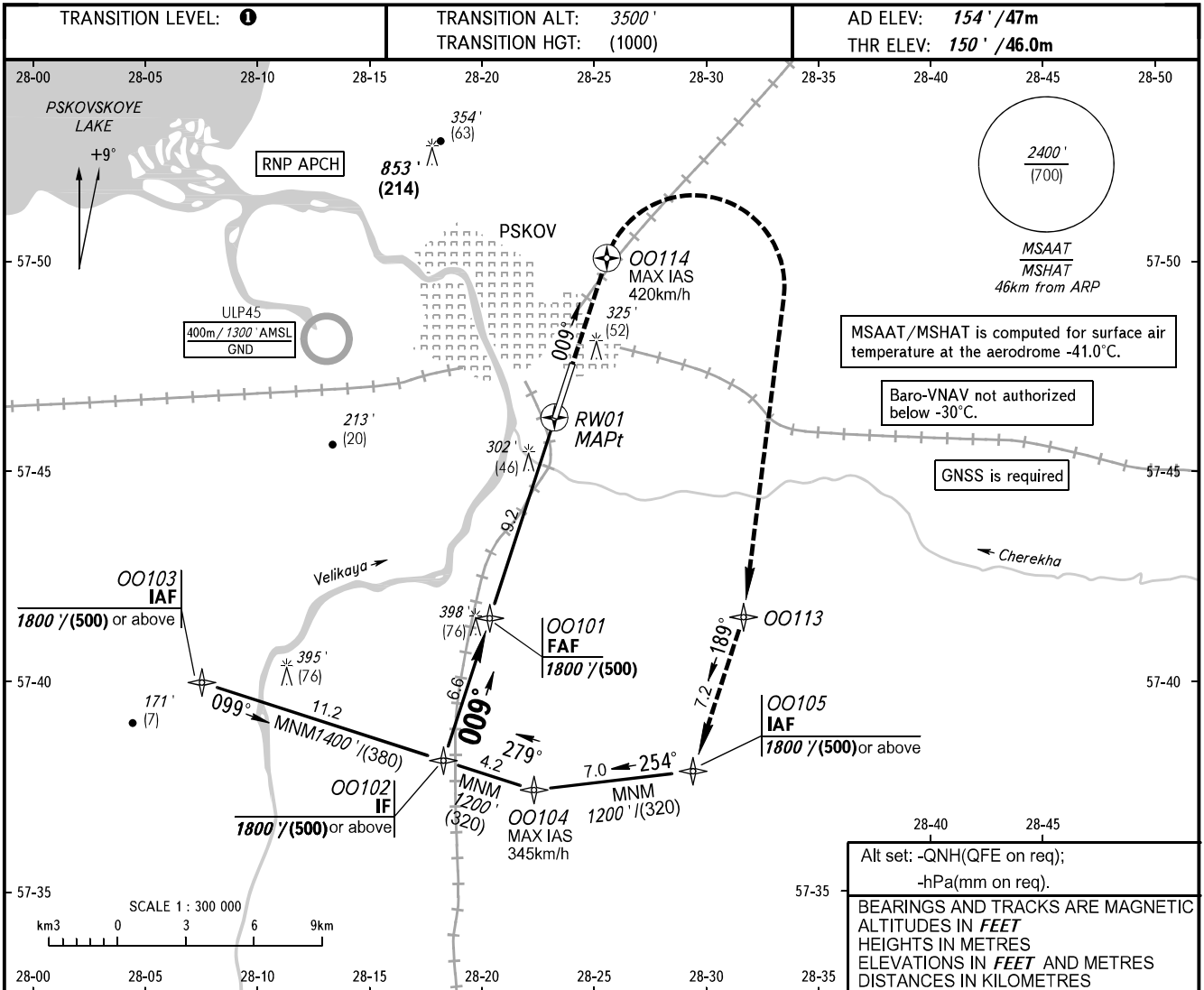


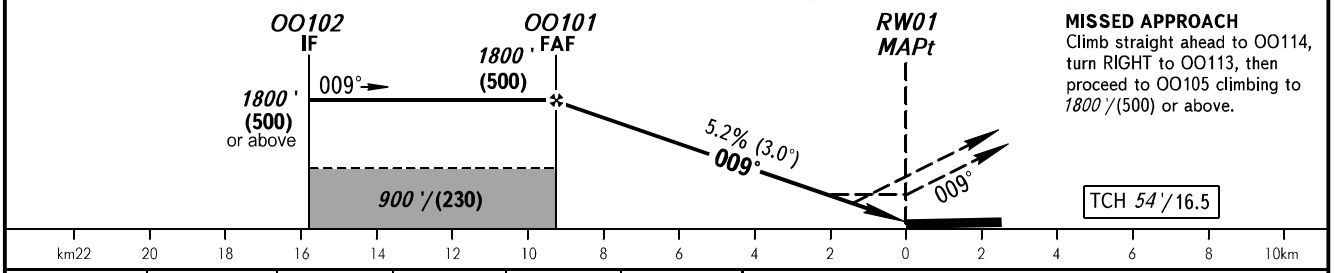
**INSTRUMENT
APPROACH
CHART - ICAO**

TOWER **122.000**

PSKOV, RUSSIA
PSKOV
RNP RWY 01



DIST to RW01	9.0	7.0	5.0	3.0
ALTITUDE/HEIGHT	1752' / (488)	1406' / (383)	1063' / (279)	719' / (173)



OCA(H)		A	B	C	D
Straight-in	LNAV	550' (400') (125)	550' (400') (125)	550' (400') (125)	550' (400') (125)
	LNAV/VNAV	435' (285') (88)	445' (295') (91)	455' (305') (94)	465' (315') (97)
Circling		620' (470') (145)	650' (500') (150)	750' (600') (180)	850' (690') (210)

1 TRANSITION LEVEL:
- FL050 when QNH is 996 hPa (747mm mercury column) or above;
- FL060 when QNH is 960 hPa (720mm mercury column) or above, but less than 996 hPa (747mm mercury column);
- FL070 when QNH is less than 960 hPa (720mm mercury column).

Visual manoeuvring west of AD is PROHIBITED.

GROUND SPEED	km/h	150	180	210	240	270	300	330	360	390
	m/s	2.2	2.6	3.1	3.5	3.9	4.4	4.8	5.2	5.7
RATE OF DESCENT	ft/min	427	512	597	682	768	853	938	1024	1109

CHANGE: New chart