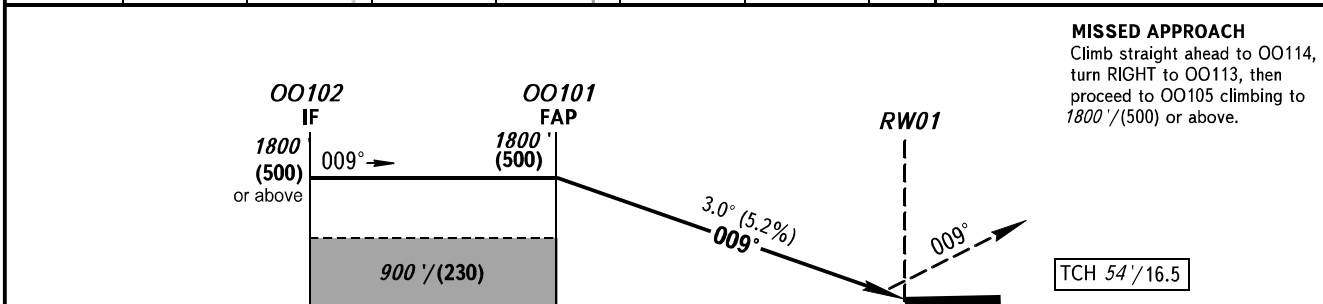
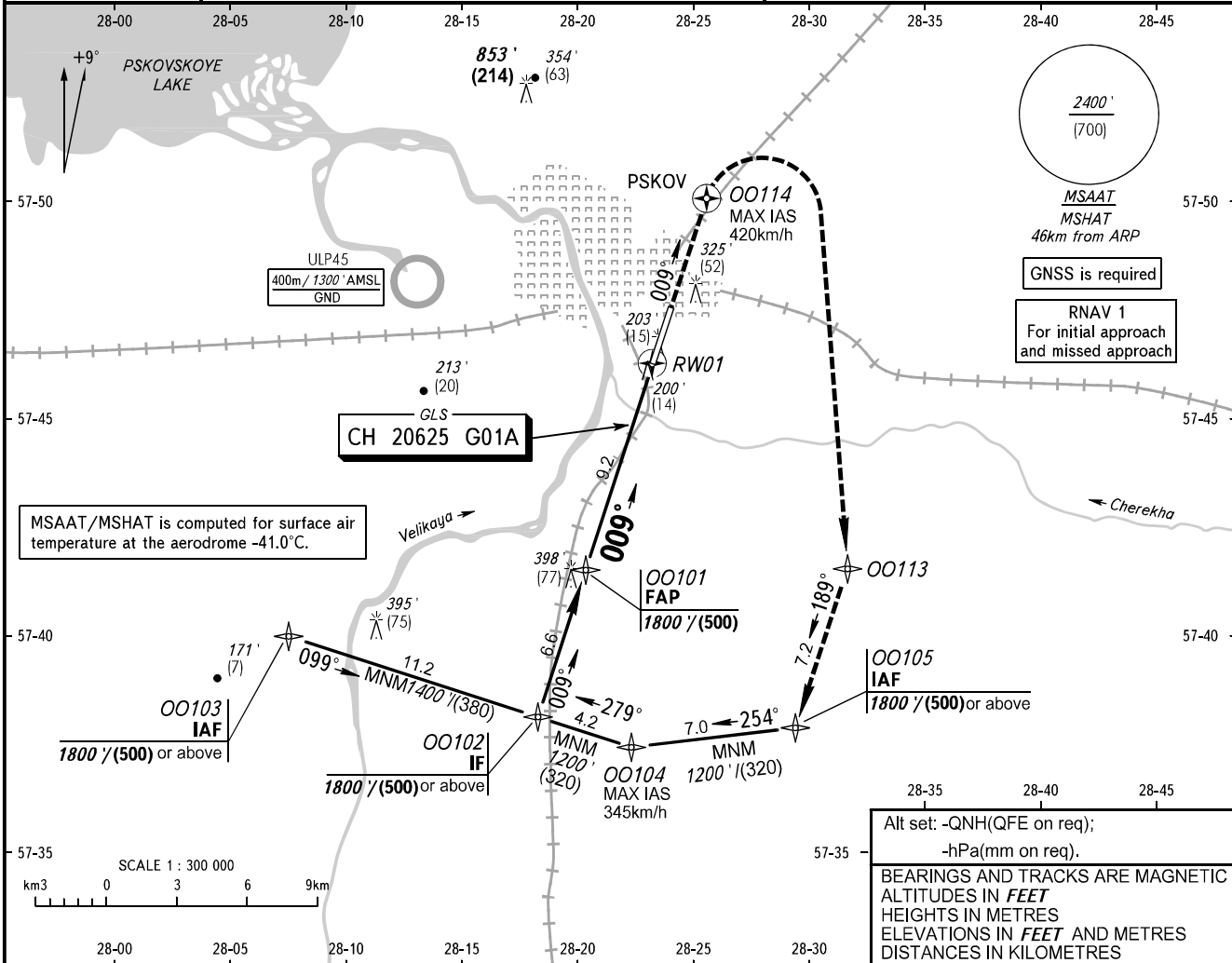


**INSTRUMENT
APPROACH
CHART - ICAO**

**PSKOV, RUSSIA
PSKOV
GLS RWY 01**

TOWER **122.000**

GBAS CH 20625 G01A **TRANSITION LEVEL:** ① **TRANSITION ALT:** 3500' **AD ELEV:** 154' / 47m
CH 20625 G01A **TRANSITION HGT:** (1000) **THR ELEV:** 150' / 46.0m



OCA(H)		A	B	C	D
Straight-in	CAT I	294' (144') (44)	307' (157') (48)	317' (167') (51)	334' (184') (56)
Approach					
Circling		620' (470') (145)	650' (500') (150)	750' (600') (180)	850' (690') (210)

① **TRANSITION LEVEL:**

- FL050 when QNH is 996 hPa (747mm mercury column) or above;
- FL060 when QNH is 960 hPa (720mm mercury column) or above, but less than 996 hPa (747mm mercury column);
- FL070 when QNH is less than 960 hPa (720mm mercury column).

Visual manoeuvring west of AD is PROHIBITED.

GROUND SPEED	km/h	150	180	210	240	270	300	330	360	390
RATE OF DESCENT	m/s	2.2	2.6	3.1	3.5	3.9	4.4	4.8	5.2	5.7
	ft/min	427	512	597	682	768	853	938	1024	1109

CHANGE: New chart