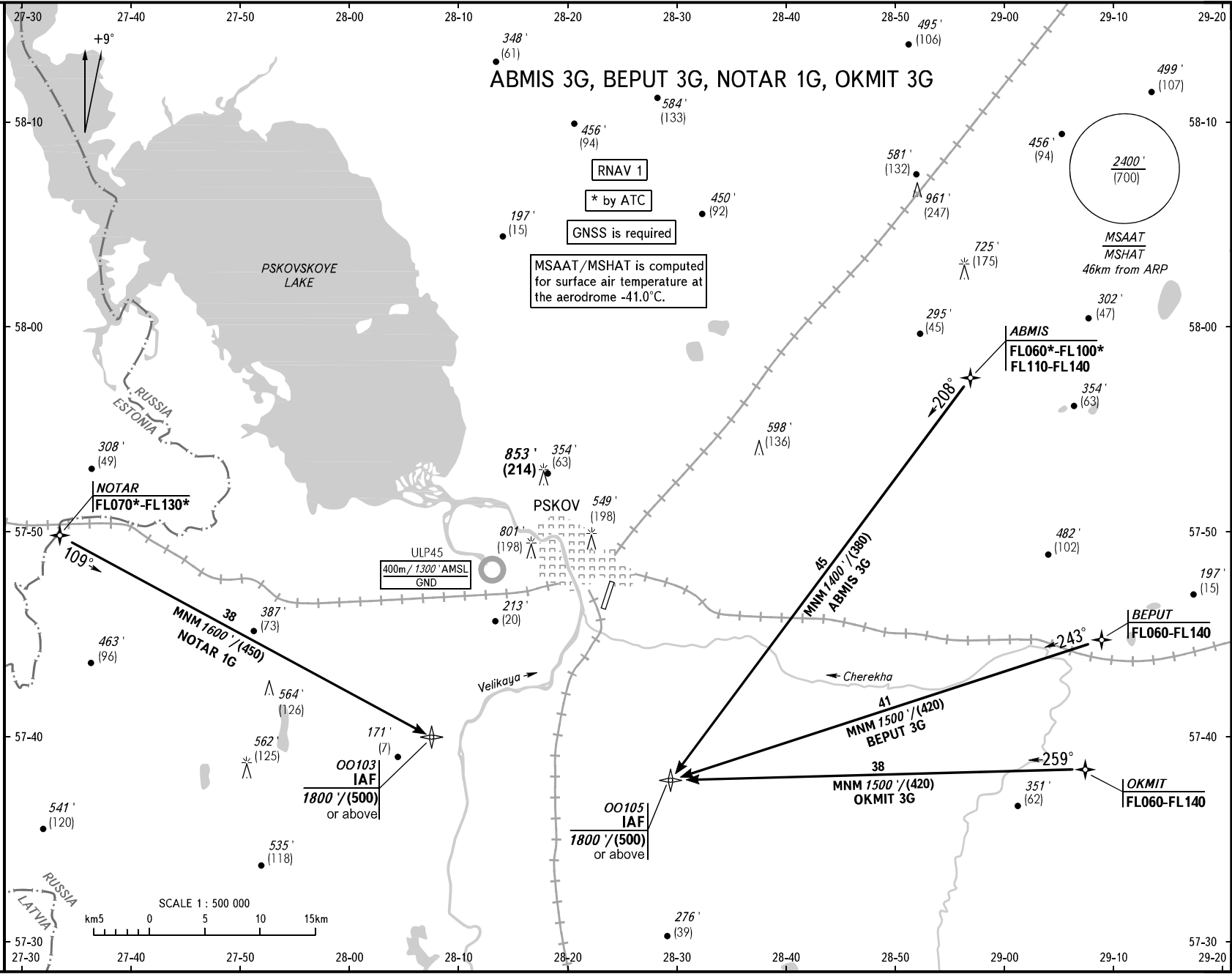


STANDARD ARRIVAL CHART  
INSTRUMENT (STAR) - ICAO

TRANSITION  
LEVEL: 1

PSKOV, RUSSIA  
PSKOV  
RNAV RWY 01



**CHANGE:** New chart

**TOWER** 122.000

BEARINGS AND TRACKS ARE MAGNETIC

ALTITUDES IN FEET

HEIGHTS IN METRES

ELEVATIONS IN FEET AND METRES

DISTANCES IN KILOMETRES

Alt set: QNH(QFE on req);  
-hPa(m on req).

**TRANSITION LEVEL:**

- FL050 when QNH is 996 hPa (747mm mercury column) or above;
- FL060 when QNH is 960 hPa (720mm mercury column) or above, but less than 996 hPa (747mm mercury column);
- FL070 when QNH is less than 960 hPa (720mm mercury column).