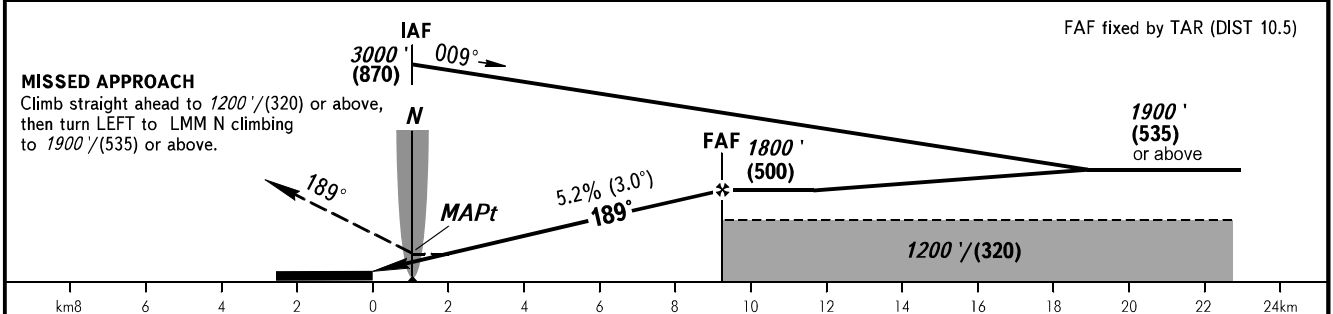
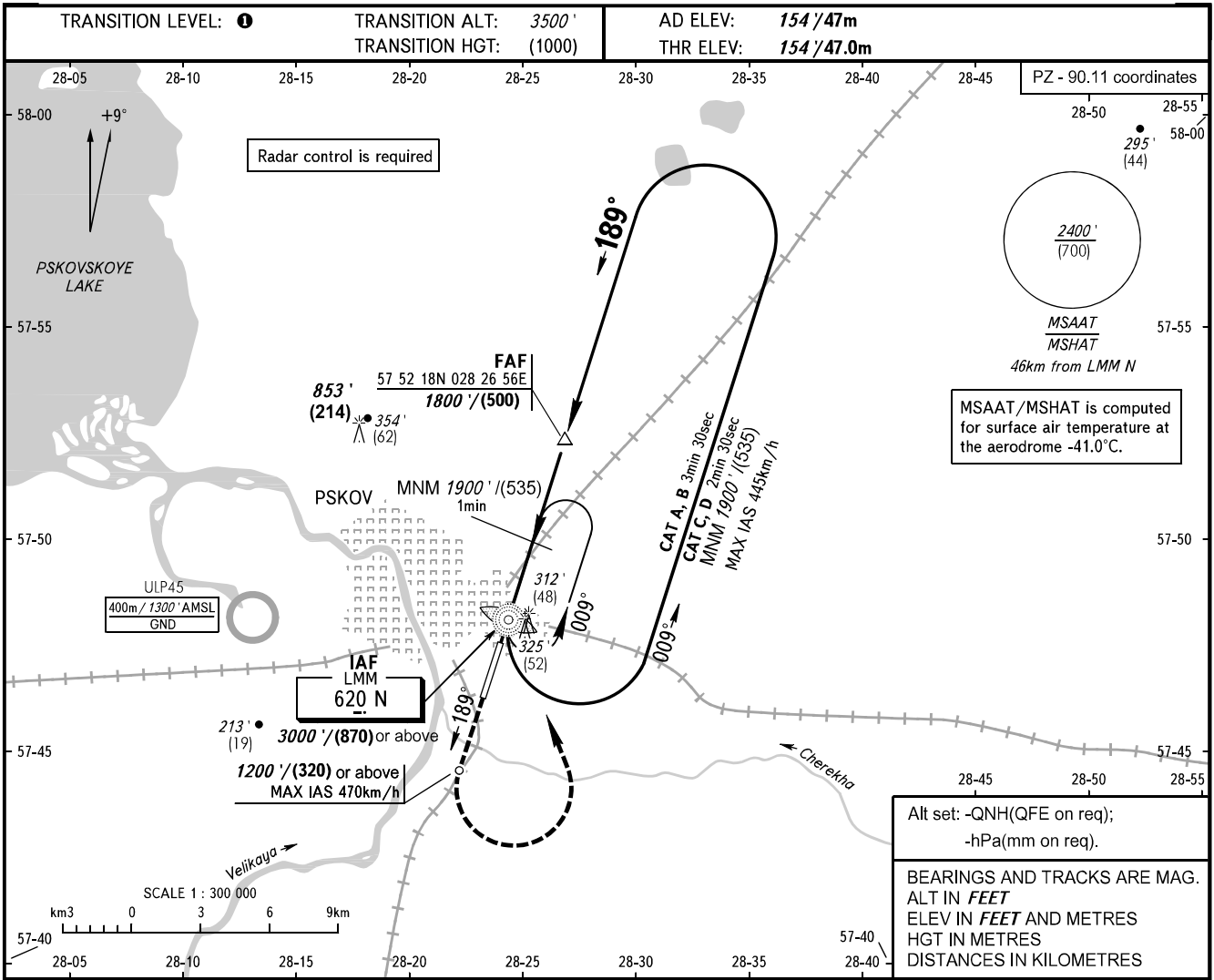


**INSTRUMENT
APPROACH
CHART - ICAO**

TOWER **122.000**

PSKOV, RUSSIA
PSKOV
NDB Y RWY 19



OCA(H)	A	B	C	D						
Straight-in	580' (420') (130)	580' (420') (130)	580' (420') (130)	580' (420') (130)						
Approach										
Circling	620' (470') (145)	650' (500') (150)	750' (600') (180)	850' (690') (210)						
GROUND SPEED	km/h	150	180	210	240	270	300	330	360	390
RATE OF DESCENT	m/s	2.2	2.6	3.1	3.5	3.9	4.4	4.8	5.2	5.7
	ft/min	427	512	597	682	768	853	938	1024	1109

TRANSITION LEVEL:

- FL050 when QNH is 996 hPa (747mm mercury column) or above;
- FL060 when QNH is 960 hPa (720mm mercury column) or above, but less than 996 hPa (747mm mercury column);
- FL070 when QNH is less than 960 hPa (720mm mercury column).

WARNING:

1. MAPt at LMM N. Timing not authorized for defining MAPt.
2. Turn before MAPt is PROHIBITED.

Visual manoeuvring west of AD is PROHIBITED.

CHANGE: New chart