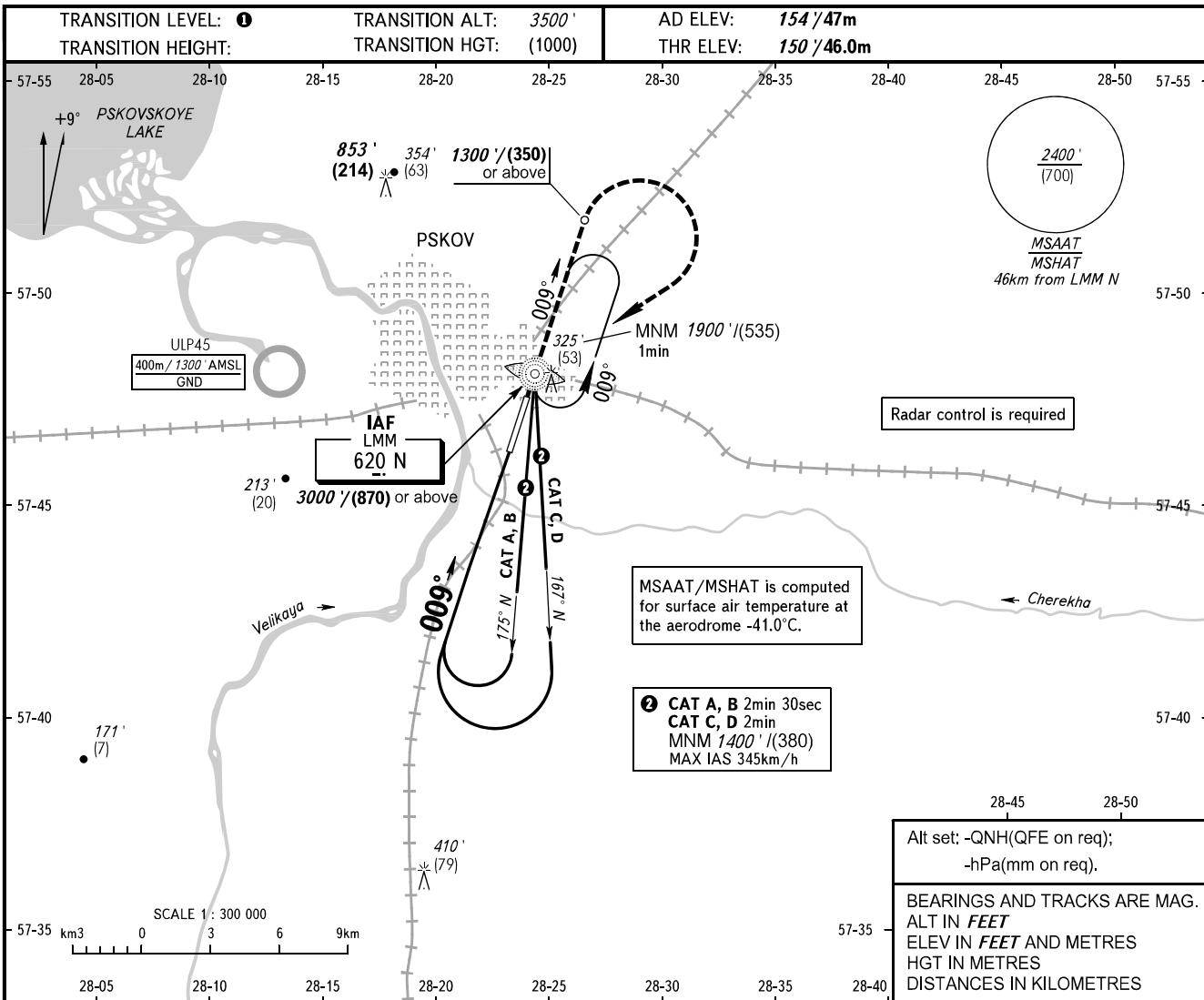


**INSTRUMENT
APPROACH
CHART - ICAO**

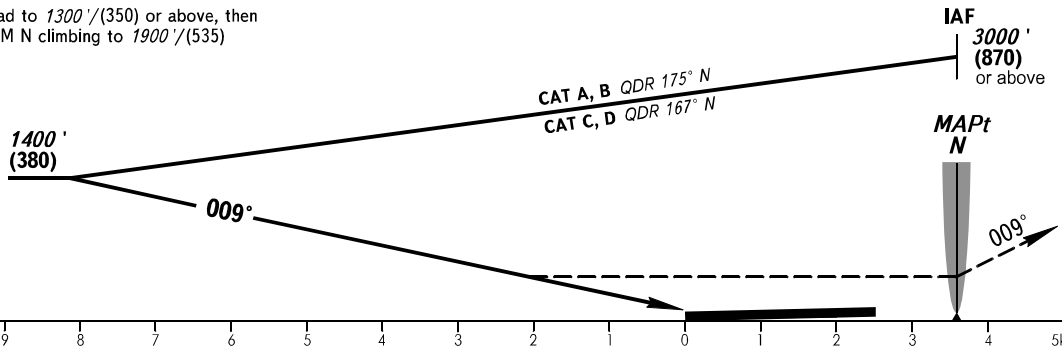
TOWER	122.000
-------	----------------

PSKOV, RUSSIA
PSKOV
NDB RWY 01



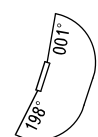
MISSED APPROACH

Climb straight ahead to **1300' / (350)** or above, then turn **RIGHT** to LMM N climbing to **1900' / (535)** or above.



OCA(H)		A	B	C	D
Straight-in	Approach	710' (560') (175)	710' (560') (175)	710' (560') (175)	710' (560') (175)
	Circling	710' (560') (175)	710' (560') (175)	750' (600') (180)	850' (690') (210)

1 TRANSITION LEVEL:
 - FL050 when QNH is 996 hPa (747mm mercury column) or above;
 - FL060 when QNH is 960 hPa (720mm mercury column) or above, but less than 996 hPa (747mm mercury column);
 - FL070 when QNH is less than 960 hPa (720mm mercury column).



WARNING:
 1. MAPt at LMM N.
 2. Turn before MAPt is PROHIBITED.
 Visual manoeuvring west of AD is PROHIBITED.

CHANGE: New chart