

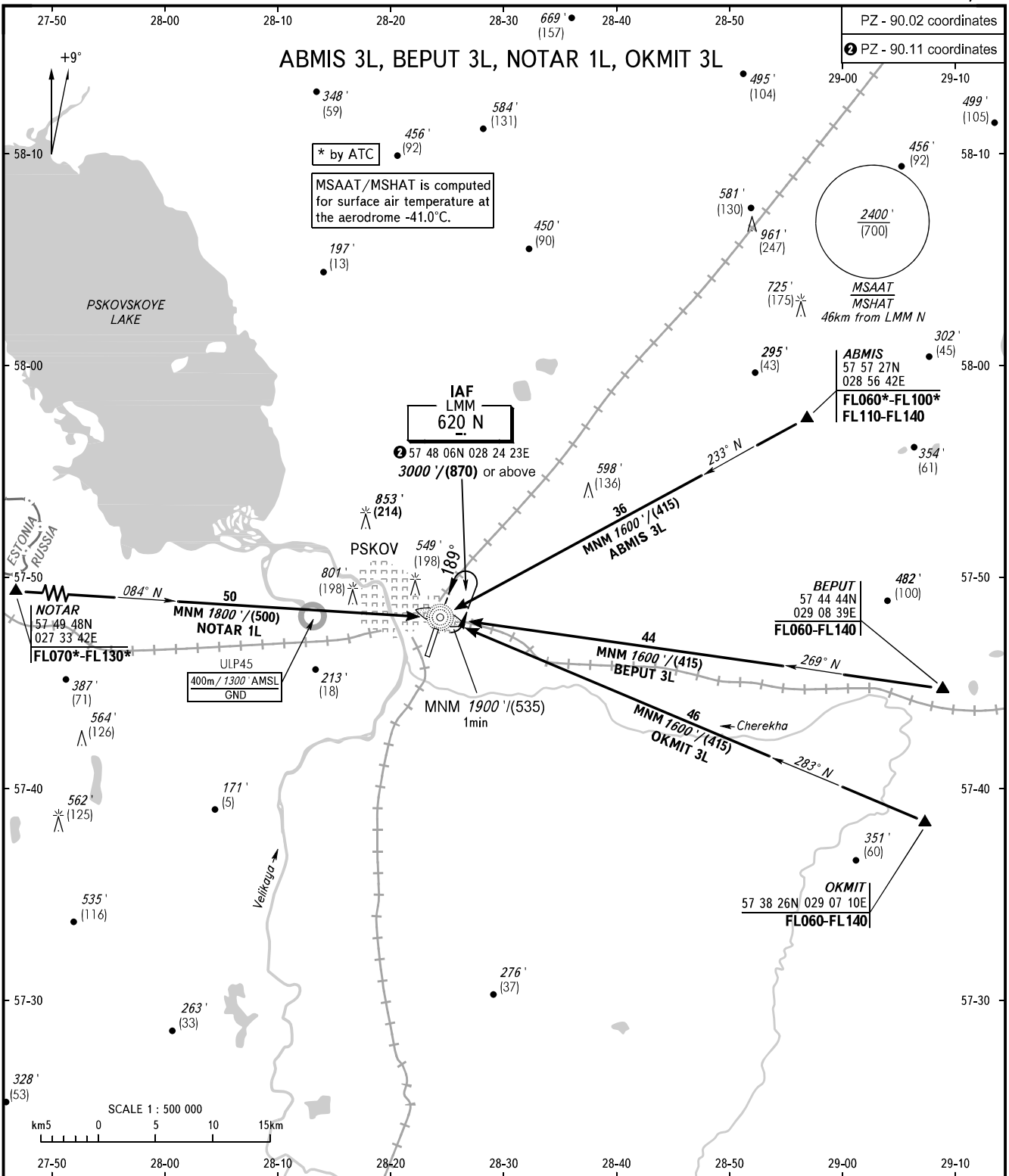
STANDARD ARRIVAL CHART
INSTRUMENT (STAR) - ICAO

PSKOV, RUSSIA

PSKOV

RWY 01/19

TRANSITION
LEVEL : 1



1 TRANSITION LEVEL:
- FL050 when QNH is 996 hPa (747mm mercury column) or above;
- FL060 when QNH is 960 hPa (720mm mercury column) or above, but less than 996 hPa (747mm mercury column);
- FL070 when QNH is less than 960 hPa (720mm mercury column).

BEARINGS AND TRACKS ARE MAGNETIC
ALTITUDES IN FEET
HEIGHTS IN METRES
ELEVATIONS IN FEET AND METRES
DISTANCES IN KILOMETRES

Alt set: -QNH(QFE on req);
-hPa(mm on req).