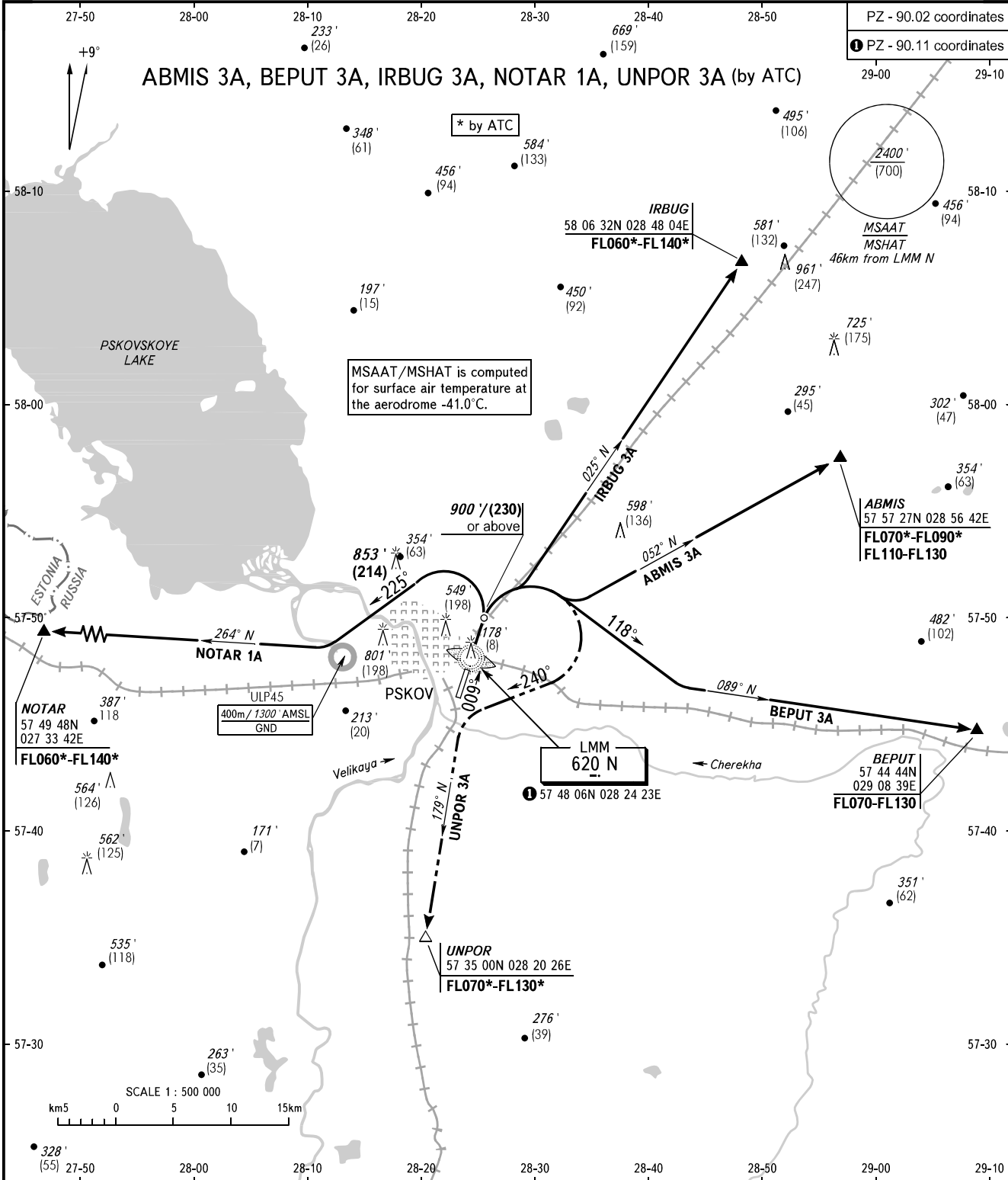


STANDARD DEPARTURE CHART  
INSTRUMENT (SID) - ICAO

PSKOV, RUSSIA  
PSKOV  
RWY 01

TRANSITION ALT : 3500'  
TRANSITION HGT : (1000)

ABMIS 3A, BEPUT 3A, IRBUG 3A, NOTAR 1A, UNPOR 3A (by ATC)



MSAAT/MSHAT is computed for surface air temperature at the aerodrome -41.0°C.

\* by ATC

PZ - 90.02 coordinates  
PZ - 90.11 coordinates

**NOTAR**  
57 49 48N  
027 33 42E  
FL060\*-FL140\*

400m / 1300' AMSL  
GND

**LMM**  
620 N  
57 48 06N 028 24 23E

**BEPUT**  
57 44 44N  
029 08 39E  
FL070-FL130

**UNPOR**  
57 35 00N 028 20 26E  
FL070\*-FL130\*

**ABMIS**  
57 57 27N 028 56 42E  
FL070\*-FL090\*  
FL110-FL130

SCALE 1 : 500 000  
km 5 0 5 10 15 km

TOWER 122.000

- WARNING:**
1. Turn before passing LMM N is PROHIBITED.
  2. There are close-in obstacles.
  3. The minimum climb gradient (required due to the airspace structure only) are as follows:  
3.8% up to FL070 for SID UNPOR 3A.  
4.2% up to FL070 for SID BEPUT 3A.  
5.2% up to FL070 for SID ABMIS 3A

BEARINGS AND TRACKS ARE MAGNETIC  
ALTITUDES IN FEET  
HEIGHTS IN METRES  
ELEVATIONS IN FEET AND METRES  
DISTANCES IN KILOMETRES

Alt set: -QNH(QFE on req);  
-hPa(mm on req).

CHANGE: NIL