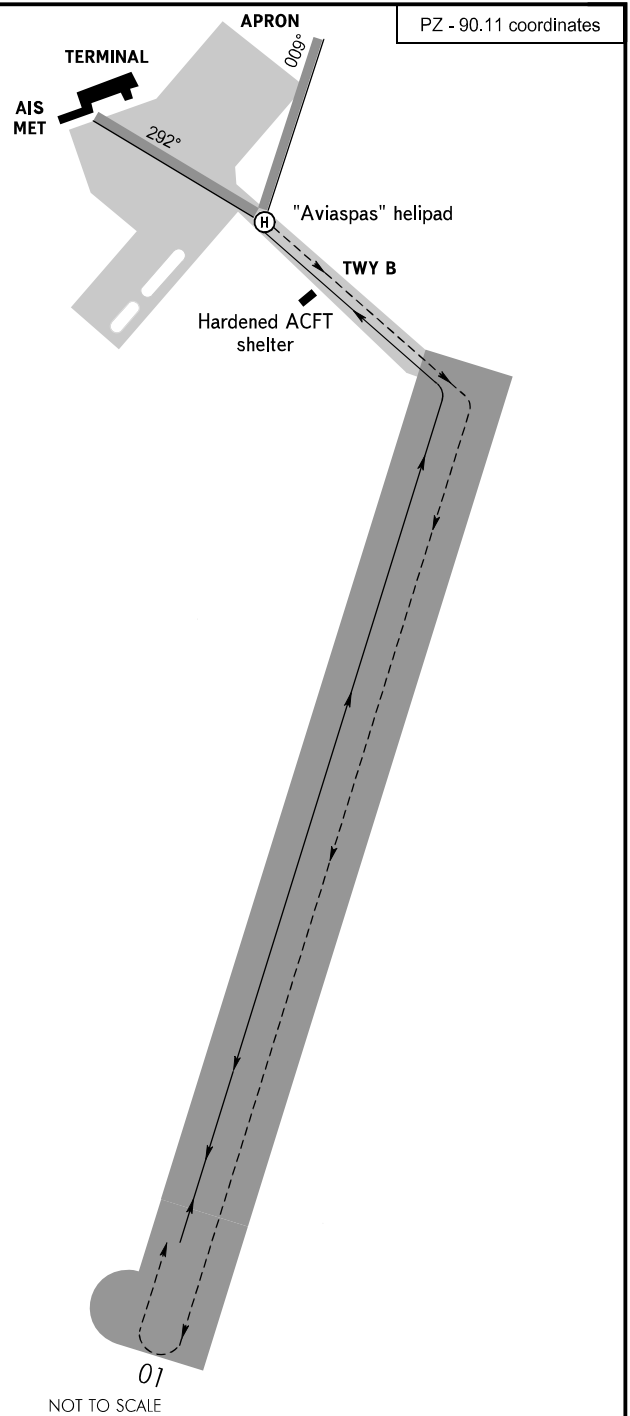
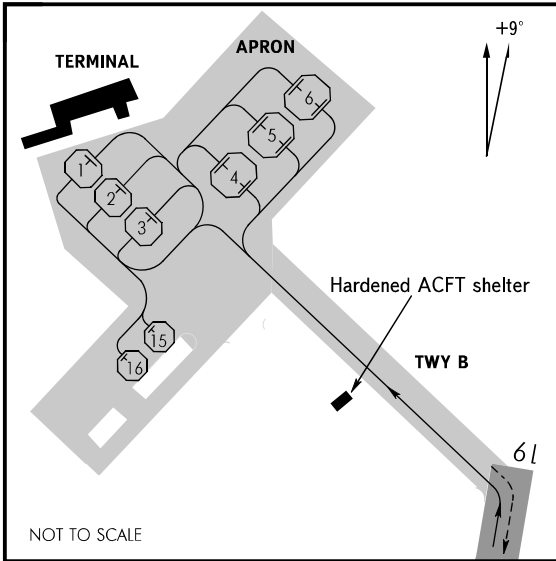


AERODROME GROUND MOVEMENT AND
AIRCRAFT PARKING/DOCKING CHART - ICAO

TOWER 122.000

PSKOV, RUSSIA

PSKOV



STAND NR	DIMENSIONS (LEN x WID), m	LATITUDE (N)	LONGITUDE (E)
1	33.2 x 27.8	57 47 49.25	028 23 30.28
2	33.2 x 27.8	57 47 48.29	028 23 31.39
3	33.2 x 27.8	57 47 47.31	028 23 32.47
4	42.0 x 41.1	57 47 48.14	028 23 37.35
5	42.0 x 41.1	57 47 48.93	028 23 39.66
6	42.0 x 41.1	57 47 49.73	028 23 41.98
15	16.5 x 18.6	57 47 44.96	028 23 30.67
16	16.5 x 18.6	57 47 44.55	028 23 29.71

APRON:
Surface: Asphalt-Concrete

TAXIWAY:
Width: B - 18m
Surface: B - Asphalt-Concrete
Strength: B - PCN 44/F/B/X/T

- WARNING:**
- Taxiing shall be carried out at reduced speed, strictly along the centre line with flight crew exercising extreme caution.
 - DIST between TWY B and fixed obstacle (hardened ACFT shelter) is 28m
 - Take-off and landing of HEL within sector 292°-009° is PROHIBITED.

STANDS:
Surface: Asphalt-Concrete - all STANDS
Strength: 1, 2 - PCN 21/F/B/Y/T
3 - PCN 16/F/B/Y/T
4, 5 - PCN 33/F/B/X/T
6 - PCN 34/F/B/X/T
15, 16 - Maximum allowable mass of ACFT is 5700kg, maximum allowable tire pressure is 3kg/cm²

ACFT types:
An-2, An-24, An-26, An-30, An-148, Yak-40, ATR-42, EMB-120ER, Fokker-50, SAAB 2000, CRJ-200ER/LR and class below ACFT, Mi-8
An-12, An-24, An-26, An-30, An-148, A-319-100, A-320-100/200, ATR -42, B737-300/400/500, CRJ-200ER/LR, EMB-120ER, EMB-170/175, EMB-190/195, Fokker-50, Il-18, Il, Il-114, RRJ-95B/LR, SAAB-2000, Tu-134, Yak-40, Yak-42 and class below ACFT, Mi-8
Stands for single-engined (light) ACFT

STANDS:
1-3
4-6
15,16

CHANGE: New chart