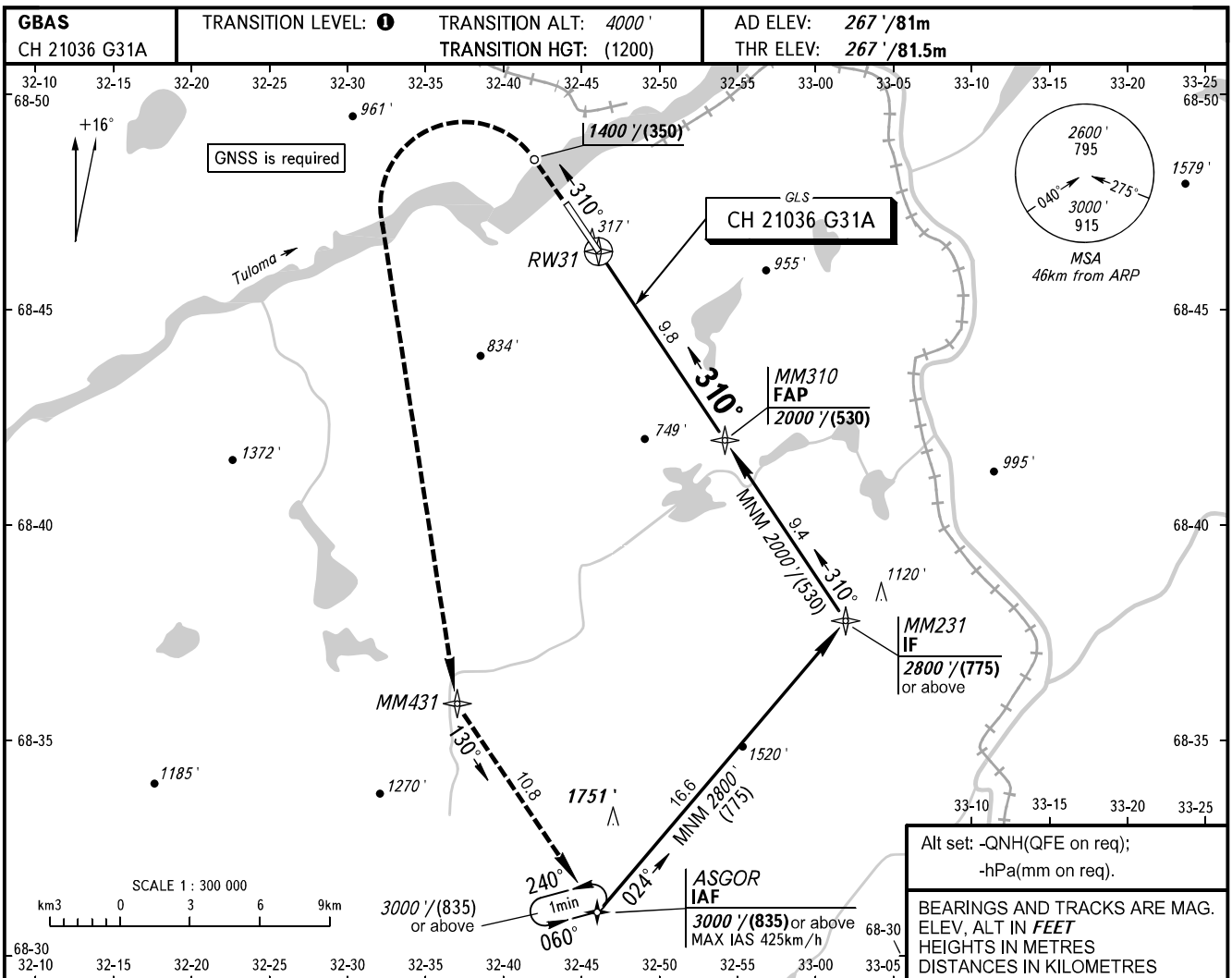


**INSTRUMENT
APPROACH
CHART - ICAO**

MURMANSK, RUSSIA
MURMANSK
GLS Y RWY 31

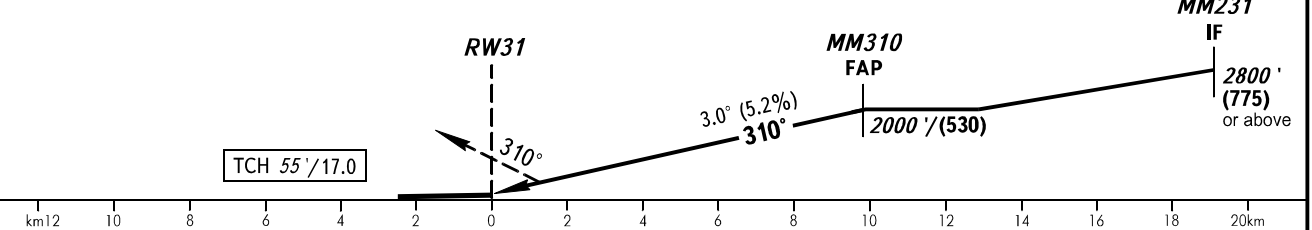
TOWER **120.300**
RADAR **120.700**



Alt set: -QNH(QFE on req);
-hPa(mm on req).

BEARINGS AND TRACKS ARE MAG. ELEV. ALT IN FEET HEIGHTS IN METRES DISTANCES IN KILOMETRES

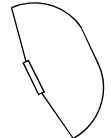
MISSED APPROACH
Climb on track 310° to 1400' / (350), then turn LEFT to MM431, then proceed to ASGOR climbing to 3000' / (835), then according to chart or by ATS unit instruction.



OCA(H)		A	B	C	D
Straight-in	CAT I	447' (180') (55)	459' (192') (59)	467' (200') (61)	478' (211') (65)
	Approach				
Circling		820' (550') (170)	990' (730') (225)	1360' (1100') (335)	1360' (1100') (335)

TRANSITION LEVEL:
- FL050 when QNH is 1013 hPa (760mm mercury column) or above;
- FL060 when QNH is 977 hPa (733mm mercury column) or above, but less than 1013 hPa (760mm mercury column);
- FL070 when QNH is less than 977 hPa (733mm mercury column).

WARNING
Visual manoeuvring to the north-east of the AD is prohibited.



GROUND SPEED	km/h	150	180	210	240	270	300	330	360	390
RATE OF DESCENT	m/s	2.2	2.6	3.0	3.5	3.9	4.3	4.8	5.2	5.6
RATE OF DESCENT	ft/min	427	512	597	682	768	853	938	1024	1109

CHANGE: Heading