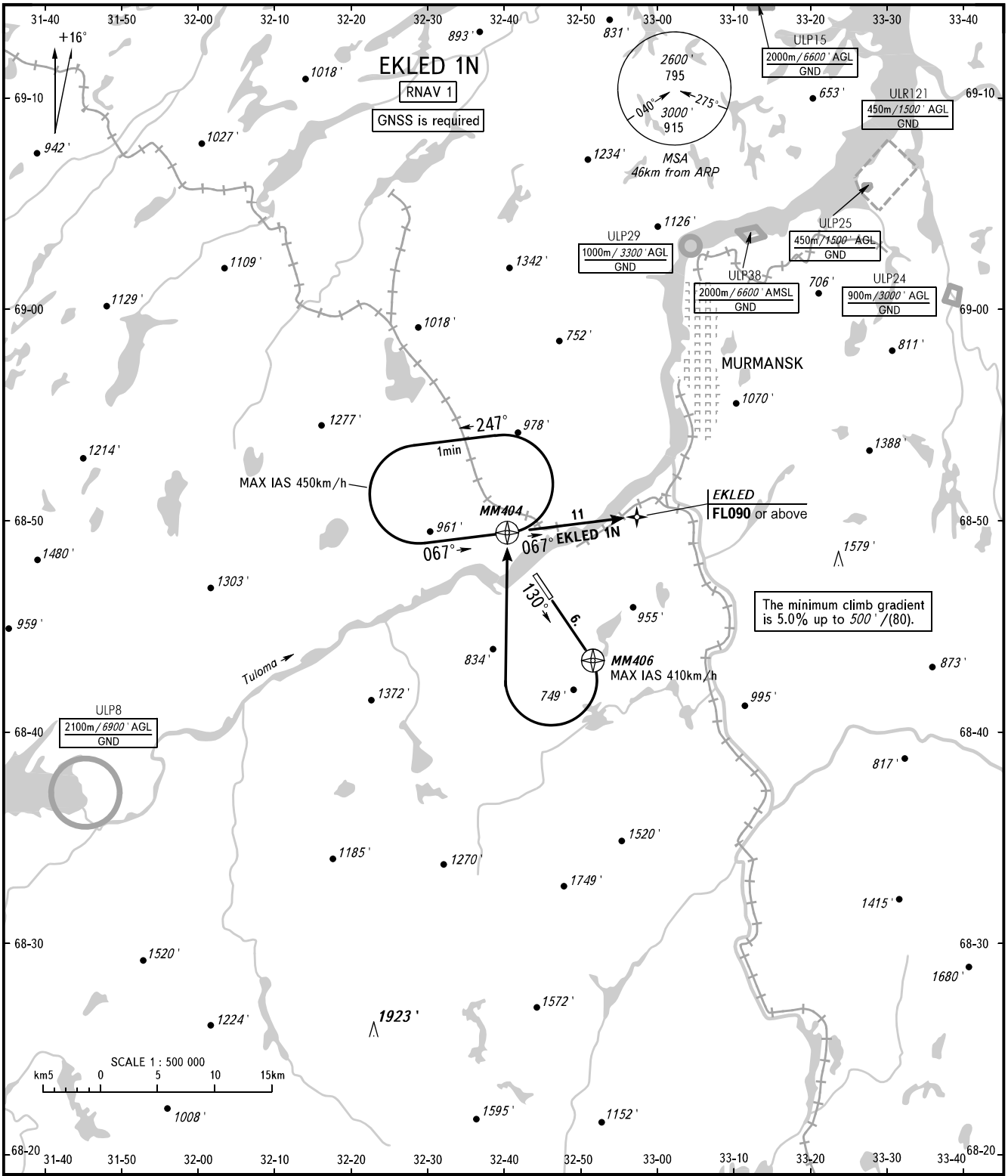


STANDARD DEPARTURE CHART  
INSTRUMENT (SID) - ICAO

TRANSITION ALTITUDE: 4000'  
TRANSITION HEIGHT: (1200)

MURMANSK, RUSSIA  
MURMANSK  
RNAV RWY 13



TOWER	120.300	<b>WARNING</b> There are close-in obstacles (trees) located to the left of take-off heading at DIST 93 - 482m from DER with MAX ELEV (60').
RADAR	120.700	

BEARINGS AND TRACKS ARE MAGNETIC ALTITUDES AND ELEVATIONS IN FEET HEIGHTS IN METRES DISTANCES IN KILOMETRES	Alt set: -QNH(QFE on req); -hPa(mm on req).
--	--

CHANGE: Heading