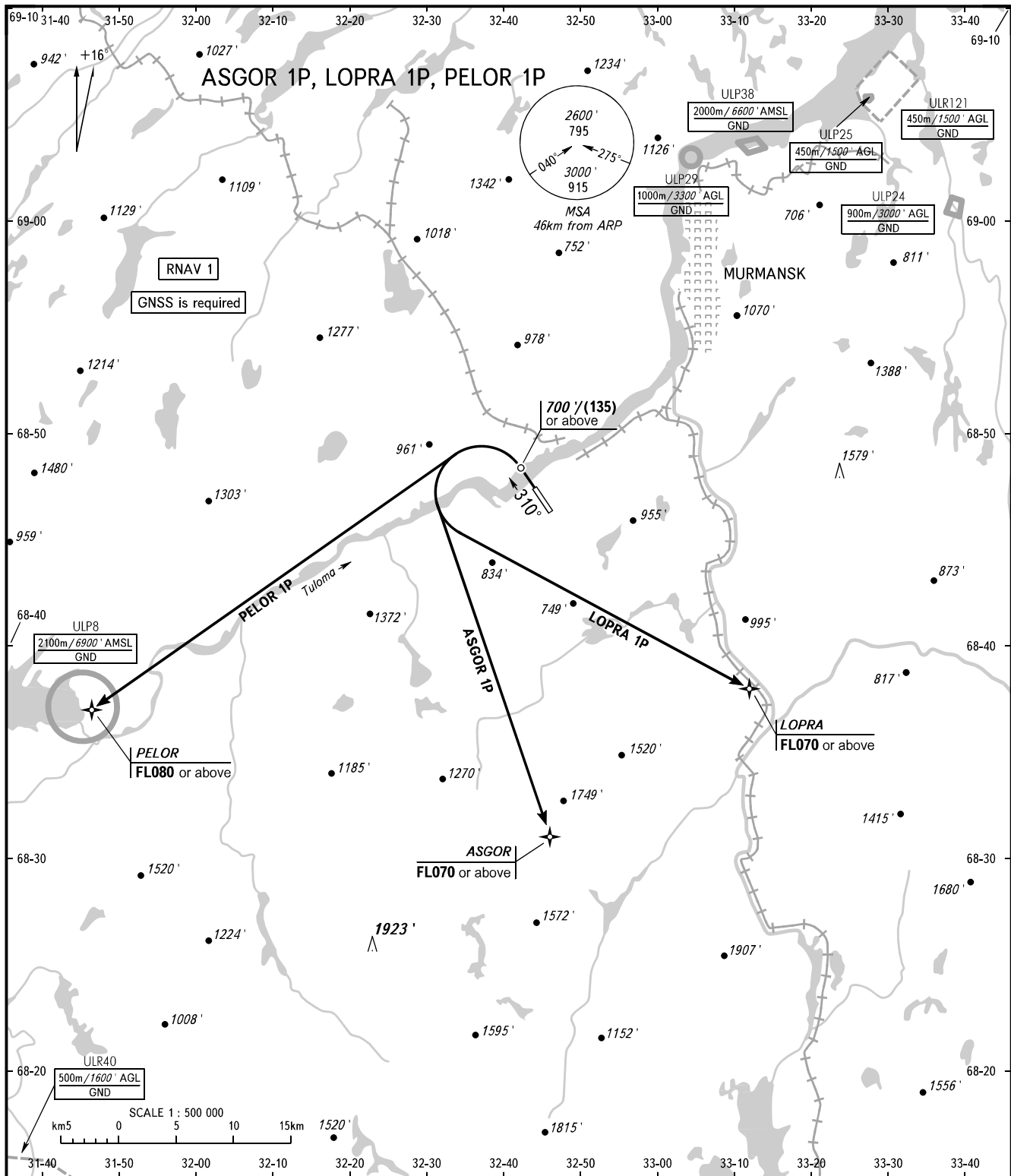


STANDARD DEPARTURE CHART
INSTRUMENT (SID) - ICAO

TRANSITION ALTITUDE: **4000'**
TRANSITION HEIGHT: **(1200)**

MURMANSK, RUSSIA
MURMANSK
RNAV RWY 31



TOWER **120.300**
RADAR **120.700**

- WARNING:**
- The minimum climb gradients are as follows:
- ASGOR 1P, LOPRA 1P - 4.0% up to FL070;
- PELOR 1P - 4.5% up to FL080.
 - If unable to maintain minimum climb gradient the flight crew shall advise ATS unit.

BEARINGS AND TRACKS ARE MAGNETIC
ALTITUDES AND ELEVATIONS IN **FEET**
HEIGHTS IN METRES
DISTANCES IN KILOMETRES

Alt set: -QNH(QFE on req);
-hPa(mm on req).