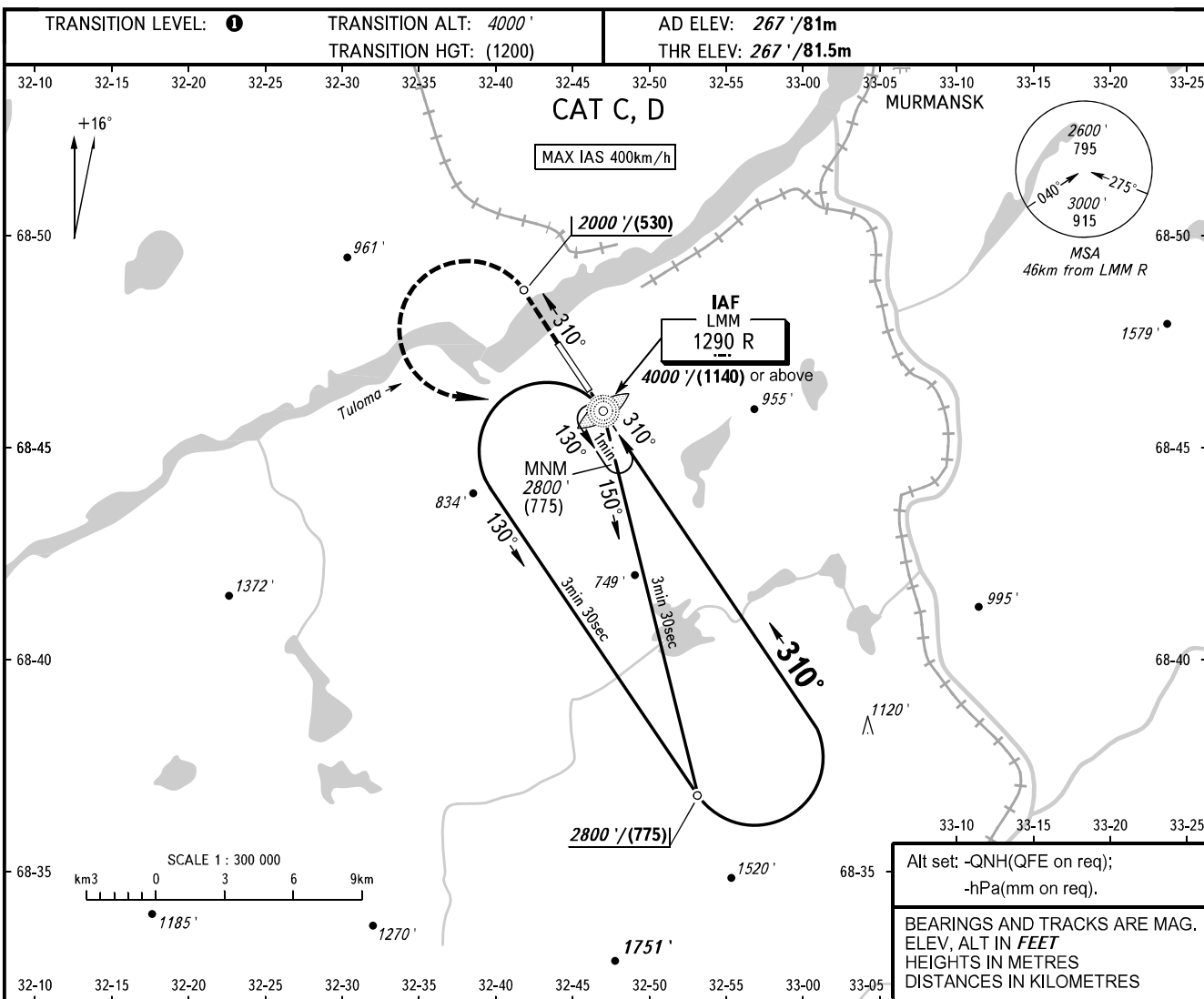


**INSTRUMENT
APPROACH
CHART - ICAO**

MURMANSK, RUSSIA
MURMANSK
NDB W RWY 31

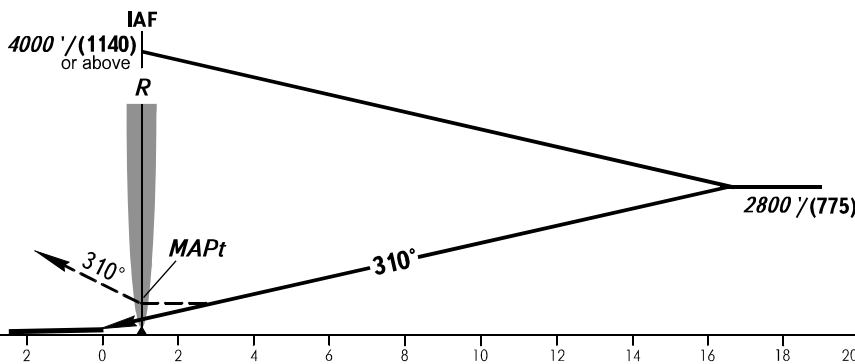
TOWER	120.300
RADAR	120.700



Alt set: -QNH(QFE on req);
-hPa(mm on req).

BEARINGS AND TRACKS ARE MAG.
ELEV, ALT IN FEET
HEIGHTS IN METRES
DISTANCES IN KILOMETRES

MISSED APPROACH
Climb on track 310° to 2000'/(530),
then turn LEFT to LMM R climbing
to 2800'/(775) or by ATS unit instruction.



OCA(H)		A	B	C	D
Straight-in Approach				1420' (1150') (355)	1420' (1150') (355)
Circling				1420' (1150') (355)	1420' (1150') (355)
MAPt at LMM R. Timing not authorized for defining MAPt.					

1 TRANSITION LEVEL:
- FL050 when QNH is 1013 hPa (760mm mercury column) or above;
- FL060 when QNH is 977 hPa (733mm mercury column) or above,
but less than 1013 hPa (760mm mercury column);
- FL070 when QNH is less than 977 hPa (733mm mercury column).

WARNING
Visual manoeuvring to the north-east
of the AD is prohibited.

CHANGE: Heading