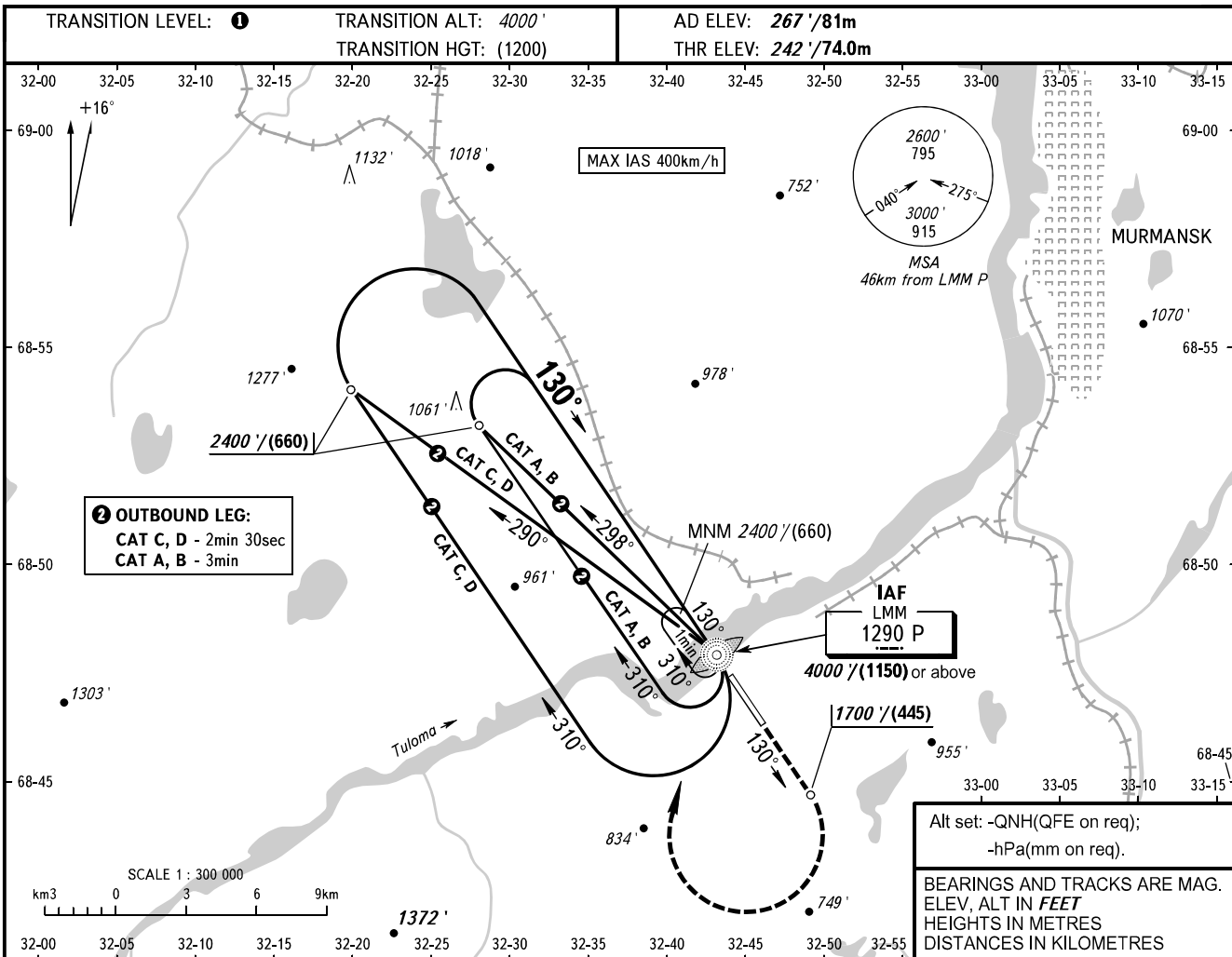


**INSTRUMENT
APPROACH
CHART - ICAO**

TOWER **120.300**
RADAR **120.700**

MURMANSK, RUSSIA
MURMANSK
NDB X RWY 13

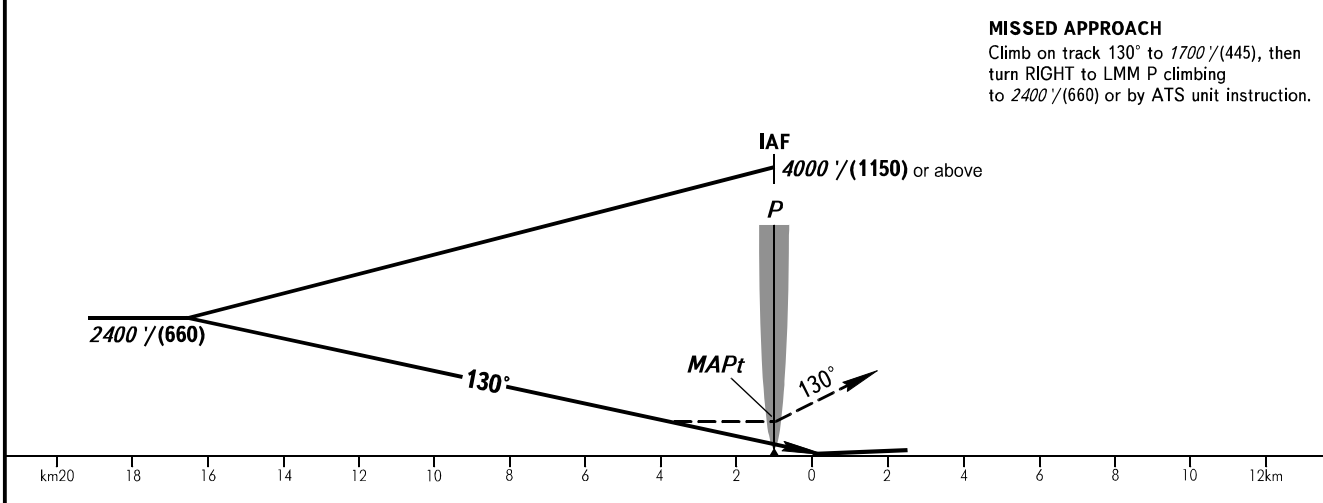


2 OUTBOUND LEG:
CAT C, D - 2min 30sec
CAT A, B - 3min

Alt set: -QNH(QFE on req);
-hPa(mm on req).

BEARINGS AND TRACKS ARE MAG.
ELEV. ALT IN FEET
HEIGHTS IN METRES
DISTANCES IN KILOMETRES

MISSED APPROACH
Climb on track 130° to 1700'/(445), then
turn RIGHT to LMM P climbing
to 2400'/(660) or by ATS unit instruction.



OCA(H)		A	B	C	D
Straight-in Approach		1260' (1020') (315)	1430' (1190') (365)	1430' (1190') (365)	1430' (1190') (365)
Circling		1260' (1020') (315)	1430' (1190') (365)	1430' (1190') (365)	1430' (1190') (365)
MAPt at LMM P. Timing not authorized for defining MAPt.					

1 TRANSITION LEVEL:
- FL050 when QNH is 1013 hPa (760mm mercury column) or above;
- FL060 when QNH is 977 hPa (733mm mercury column) or above,
but less than 1013 hPa (760mm mercury column);
- FL070 when QNH is less than 977 hPa (733mm mercury column).

WARNING
Visual manoeuvring to the north-east
of the AD is prohibited.

