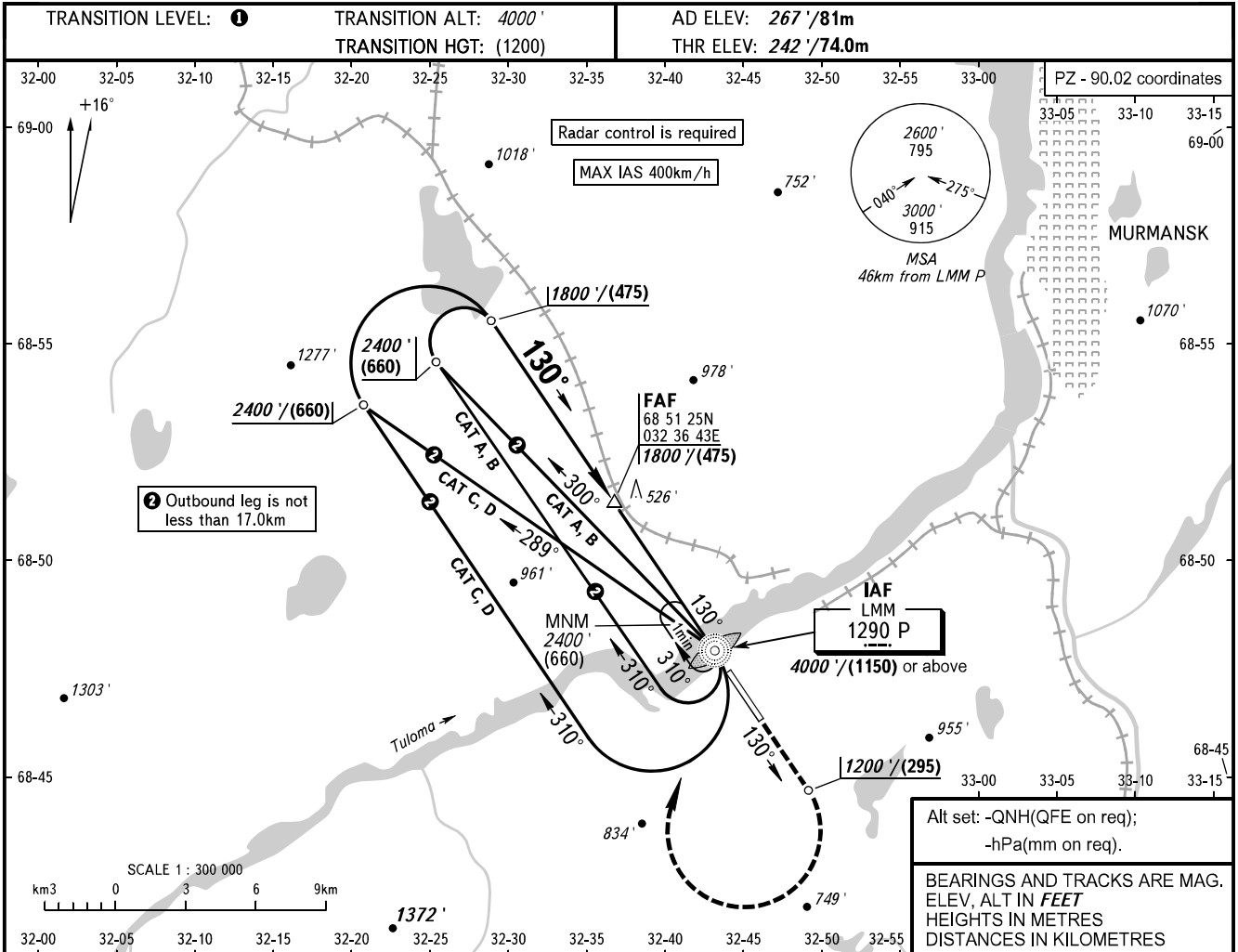


**INSTRUMENT
APPROACH
CHART - ICAO**

TOWER **120.300**
RADAR **120.700**

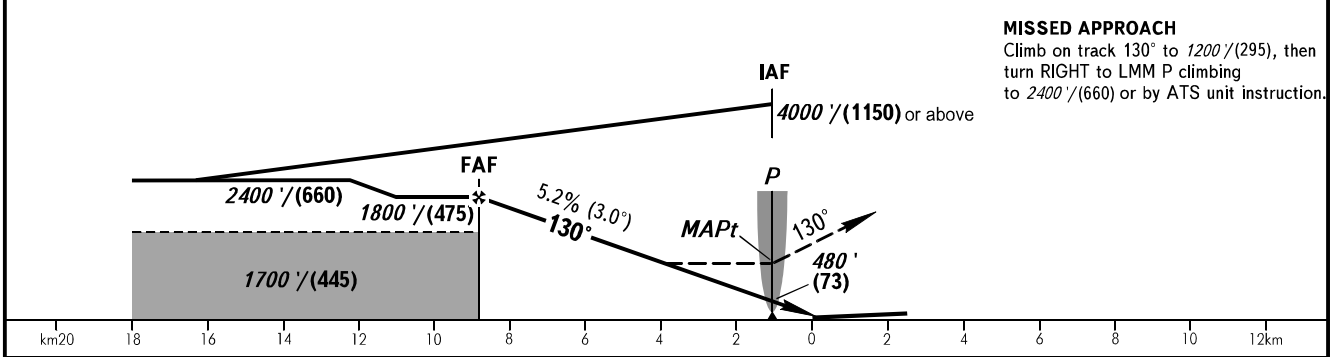
MURMANSK, RUSSIA
MURMANSK
NDB Y RWY 13



Alt set: -QNH(QFE on req);
-hPa(mm on req).

BEARINGS AND TRACKS ARE MAG.
ELEV, ALT IN FEET
HEIGHTS IN METRES
DISTANCES IN KILOMETRES

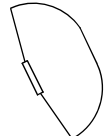
MISSED APPROACH
Climb on track 130° to 1200'/(295), then turn RIGHT to LMM P climbing to 2400'/(660) or by ATS unit instruction.



OCA(H)	A	B	C	D
Straight-in	780' (540') (165)	780' (540') (165)	780' (540') (165)	780' (540') (165)
Approach				
Circling	820' (550') (170)	990' (730') (225)	1360' (1100') (335)	1360' (1100') (335)
MAPt at LMM P. Timing not authorized for defining MAPt.				

1 TRANSITION LEVEL:
- FL050 when QNH is 1013 hPa (760mm mercury column) or above;
- FL060 when QNH is 977 hPa (733mm mercury column) or above, but less than 1013 hPa (760mm mercury column);
- FL070 when QNH is less than 977 hPa (733mm mercury column).

WARNING
Visual manoeuvring to the north-east of the AD is prohibited.



GROUND SPEED	km/h	150	180	210	240	270	300	330	360	390
RATE OF DESCENT	m/s	2.2	2.6	3.0	3.5	3.9	4.3	4.8	5.2	5.6
RATE OF DESCENT	ft/min	427	512	597	682	768	853	938	1024	1109

CHANGE: Heading