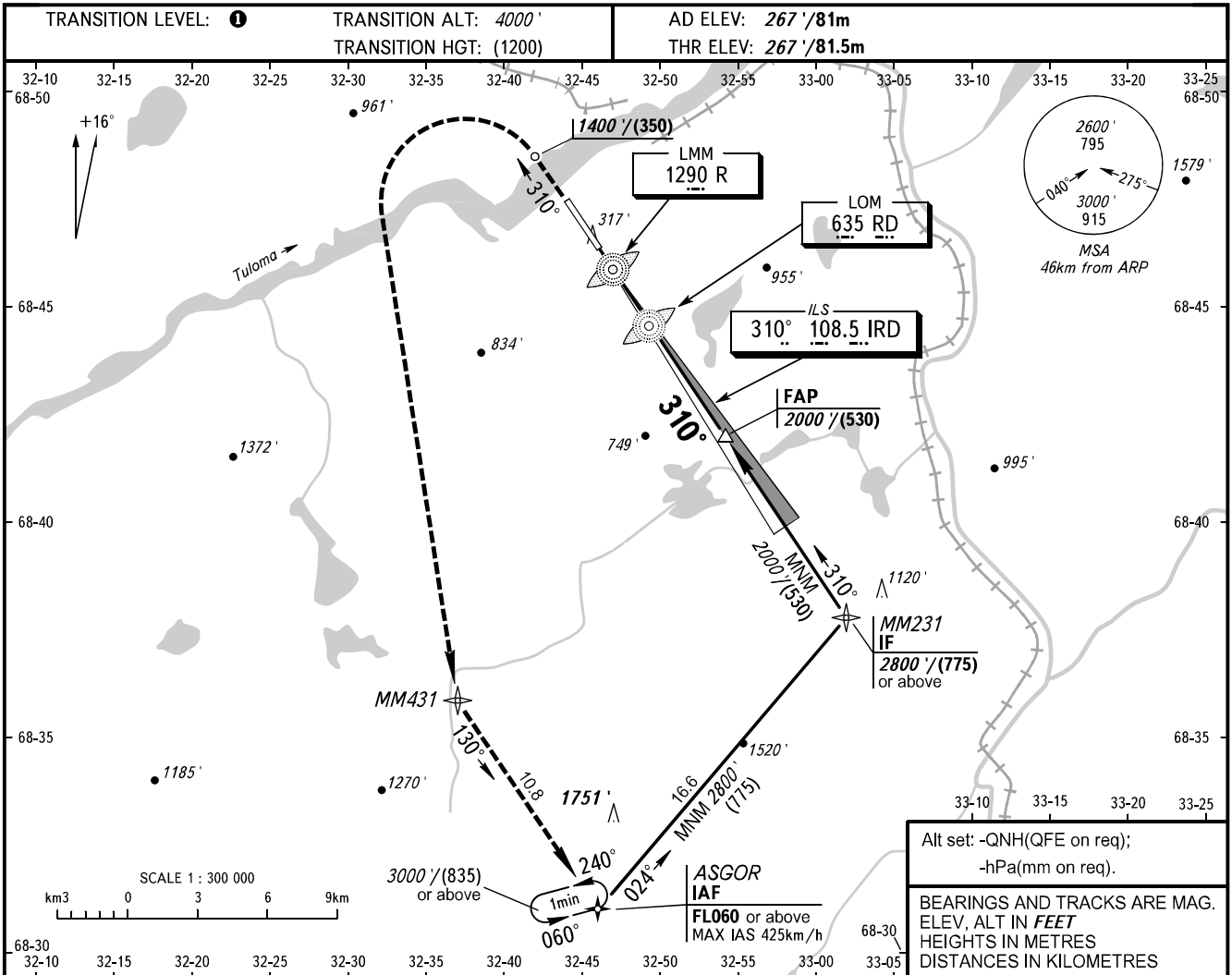


**INSTRUMENT
APPROACH
CHART - ICAO**

MURMANSK, RUSSIA
MURMANSK
ILS Z CAT I RWY 31

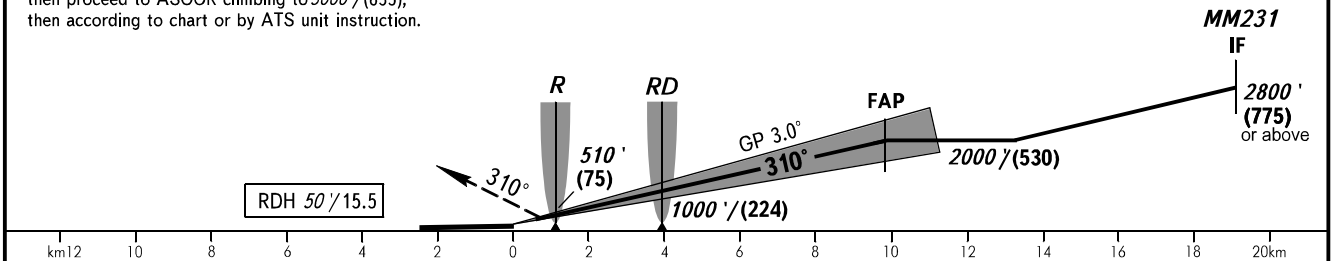
TOWER	120.300
RADAR	120.700



Alt set: -QNH(QFE on req);
-hPa(mm on req).

BEARINGS AND TRACKS ARE MAG. ELEV. ALT IN FEET HEIGHTS IN METRES DISTANCES IN KILOMETRES

MISSED APPROACH
Climb on track 310° to 1400'/(350), then turn LEFT to MM431, then proceed to ASGOR climbing to 3000'/(835), then according to chart or by ATS unit instruction.



OCA(H)		A	B	C	D
Straight-in	CAT I	447' (180') (55)	459' (192') (59)	467' (200') (61)	478' (211') (64)
	Approach				
Circling		820' (550') (170)	990' (730') (225)	1360' (1100') (335)	1360' (1100') (335)

1 TRANSITION LEVEL:
- FL050 when QNH is 1013 hPa (760mm mercury column) or above;
- FL060 when QNH is 977 hPa (733mm mercury column) or above, but less than 1013 hPa (760mm mercury column);
- FL070 when QNH is less than 977 hPa (733mm mercury column).

WARNING
Visual manoeuvring to the north-east of the AD is prohibited.

CHANGE: Heading	GROUND SPEED	km/h	150	180	210	240	270	300	330	360	390
RATE OF DESCENT	m/s		2.2	2.6	3.0	3.5	3.9	4.3	4.8	5.2	5.6
RATE OF DESCENT	ft/min		427	512	597	682	768	853	938	1024	1109