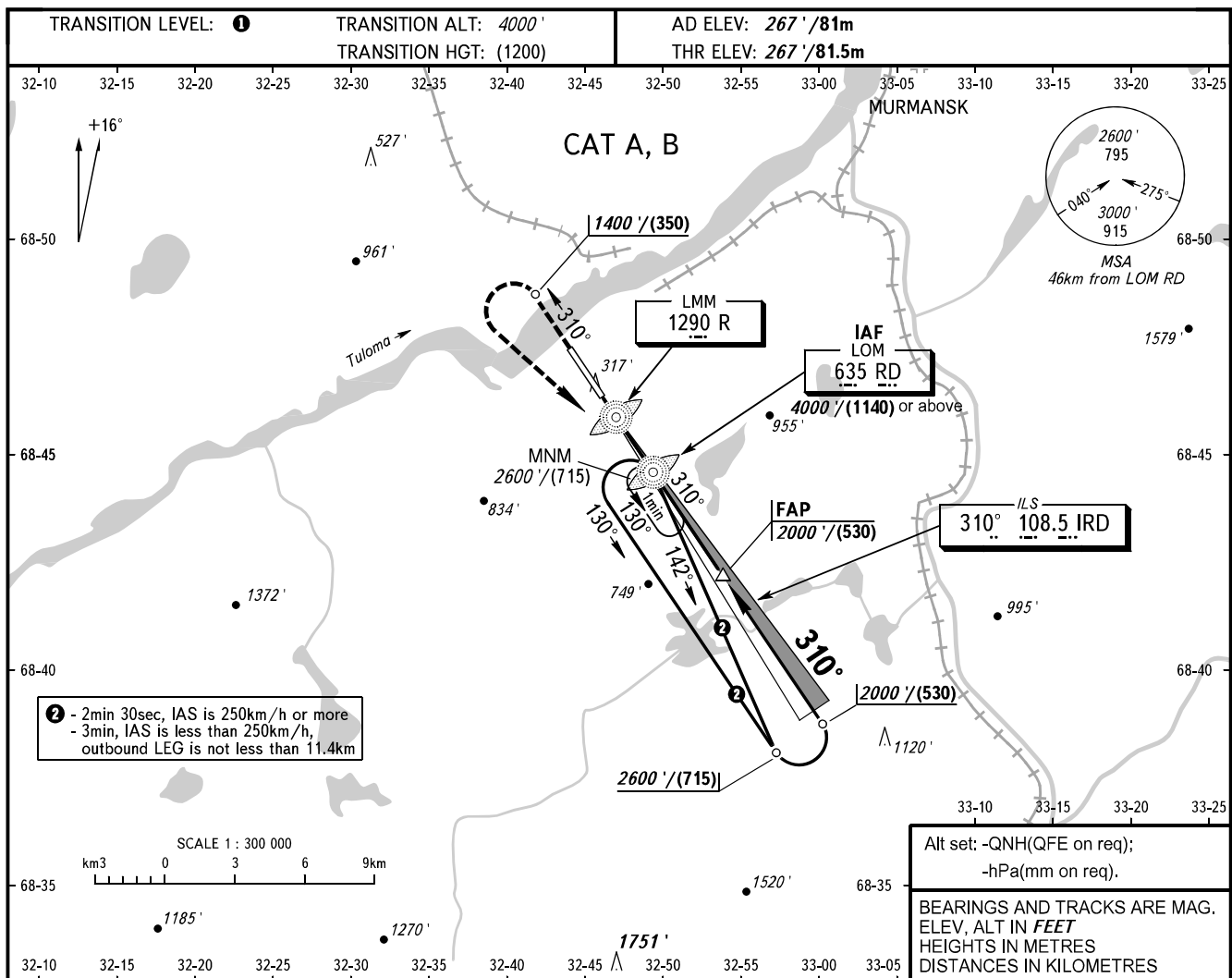


**INSTRUMENT
APPROACH
CHART - ICAO**

TOWER	120.300
RADAR	120.700

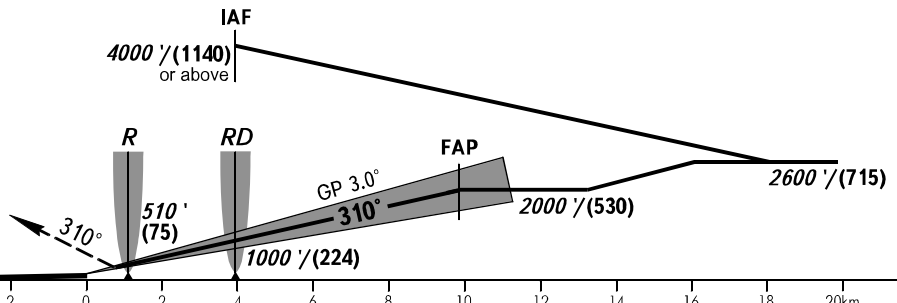
MURMANSK, RUSSIA
MURMANSK
ILS W CAT I RWY 31



② - 2min 30sec, IAS is 250km/h or more
- 3min, IAS is less than 250km/h,
outbound LEG is not less than 11.4km

Alt set: -QNH(QFE on req);
-hPa(mm on req).
BEARINGS AND TRACKS ARE MAG.
ELEV, ALT IN FEET
HEIGHTS IN METRES
DISTANCES IN KILOMETRES

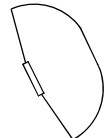
MISSED APPROACH
Climb on track 310° to 1400'(350), then
turn LEFT to LOM RD climbing
to 2600'(715) or by ATS unit instruction.



OCA(H)		A	B	C	D
Straight-in Approach	CAT I	447' (180') (55)	459' (192') (59)		
Circling		820' (550') (170)	990' (730') (225)		

① **TRANSITION LEVEL:**
- FL050 when QNH is 1013 hPa (760mm mercury column) or above;
- FL060 when QNH is 977 hPa (733mm mercury column) or above,
but less than 1013 hPa (760mm mercury column);
- FL070 when QNH is less than 977 hPa (733mm mercury column).

WARNING
Visual manoeuvring to the north-east
of the AD is prohibited.



GROUND SPEED	km/h	150	180	210	240	270	300	330	360	390
RATE OF DESCENT	m/s	2.2	2.6	3.0	3.5	3.9	4.3	4.8	5.2	5.6
RATE OF DESCENT	ft/min	427	512	597	682	768	853	938	1024	1109