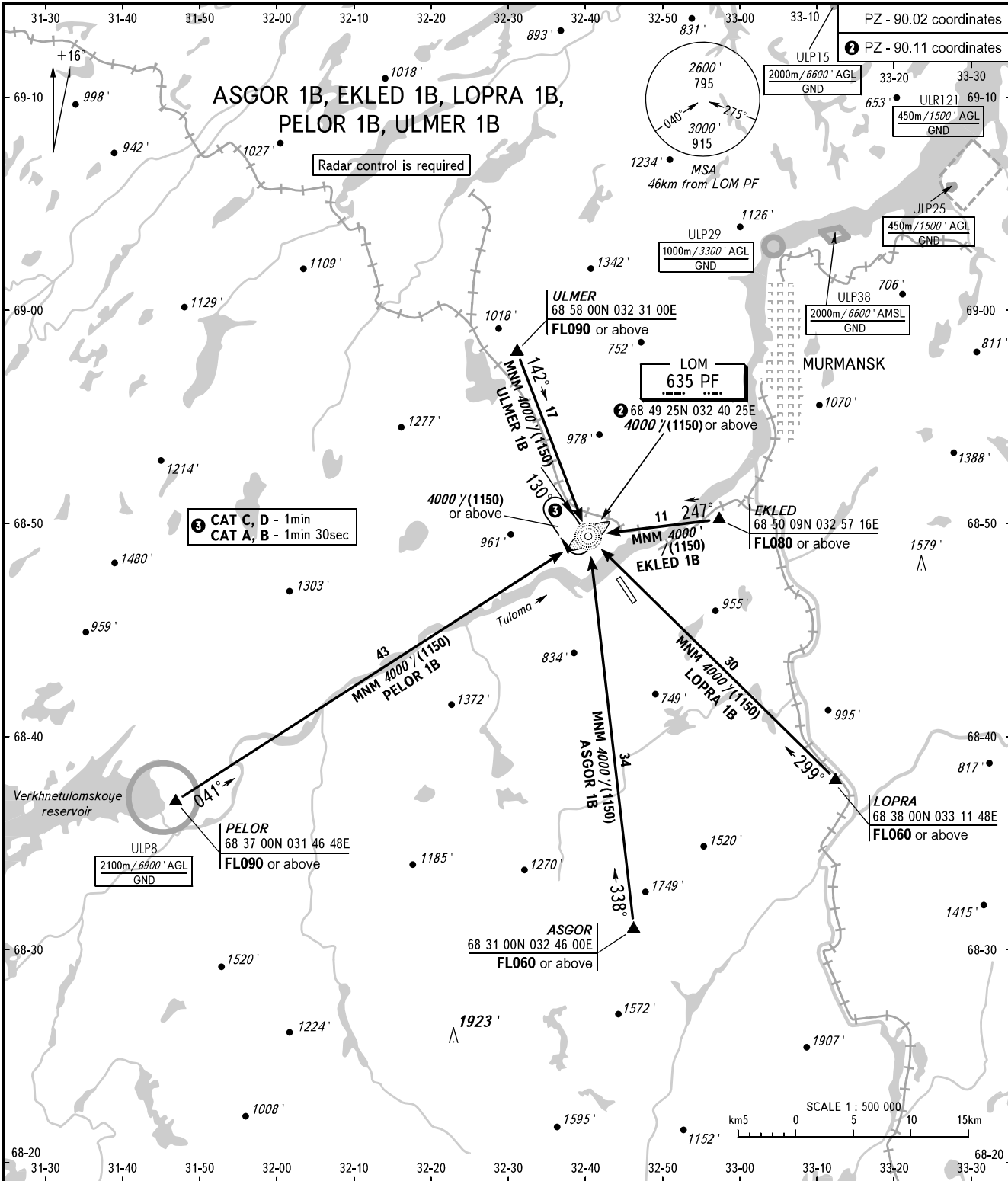


STANDARD ARRIVAL CHART
INSTRUMENT (STAR) - ICAO

MURMANSK, RUSSIA
MURMANSK
RWY 13

TRANSITION
LEVEL: ①



TOWER	120.300	① TRANSITION LEVEL: - FL050 when QNH is 1013 hPa (760mm mercury column) or above; - FL060 when QNH is 977 hPa (733mm mercury column) or above, but less than 1013 hPa (760mm mercury column); - FL070 when QNH is less than 977 hPa (733mm mercury column).
RADAR	120.700	
BEARINGS AND TRACKS ARE MAGNETIC ALTITUDES AND ELEVATIONS IN FEET HEIGHTS IN METRES DISTANCES IN KILOMETRES		Alt set: -QNH(QFE on req); -hPa(mm on req).

CHANGE: Heading