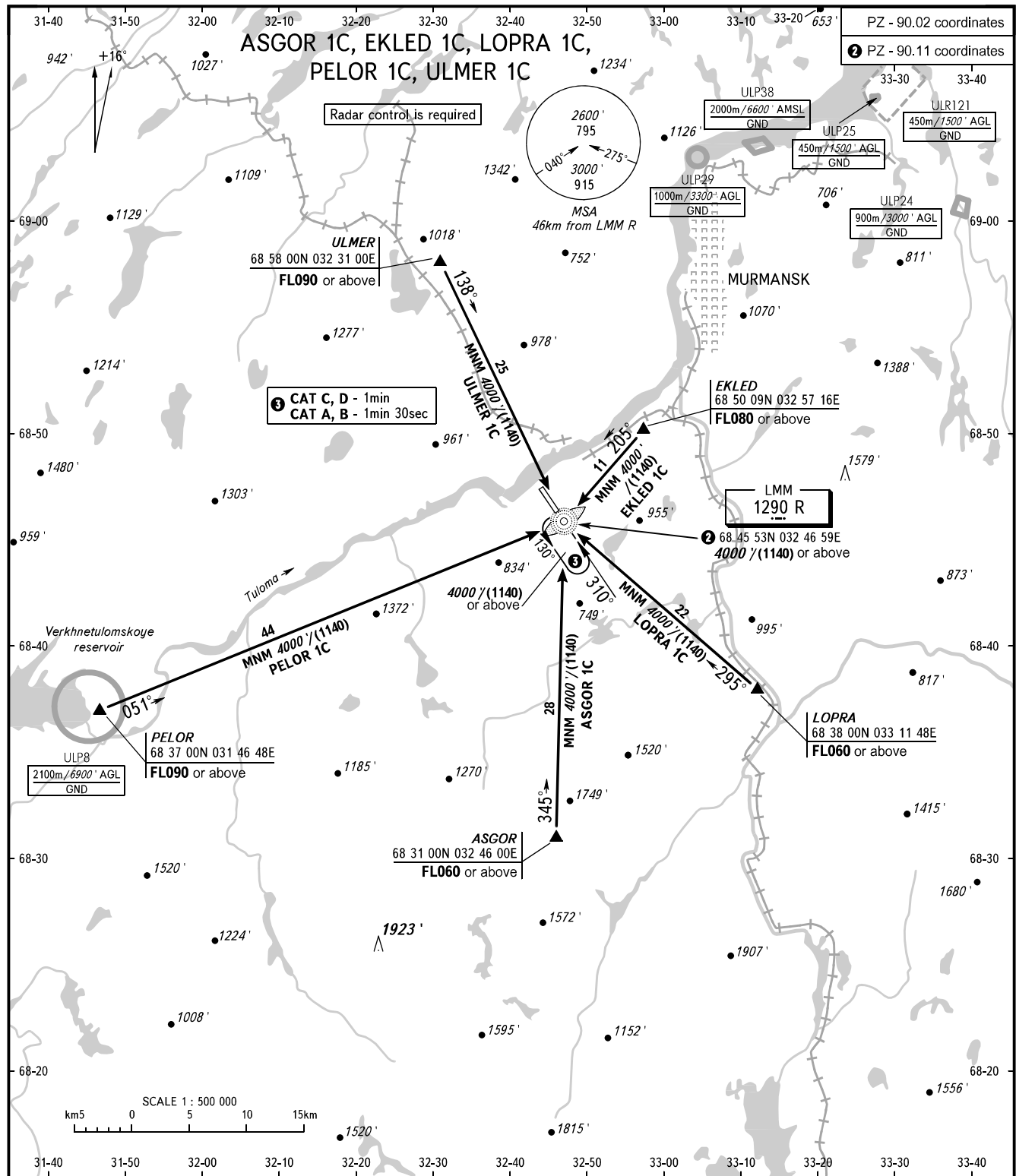


STANDARD ARRIVAL CHART  
INSTRUMENT (STAR) - ICAO

MURMANSK, RUSSIA  
MURMANSK  
RWY 31

TRANSITION  
LEVEL: ①



③ CAT C, D - 1min  
CAT A, B - 1min 30sec

LMM  
1290 R

① TRANSITION LEVEL:  
- FL050 when QNH is 1013 hPa (760mm mercury column) or above;  
- FL060 when QNH is 977 hPa (733mm mercury column) or above,  
but less than 1013 hPa (760mm mercury column);  
- FL070 when QNH is less than 977 hPa (733mm mercury column).

TOWER	120.300
RADAR	120.700

BEARINGS AND TRACKS ARE MAGNETIC  
ALTITUDES AND ELEVATIONS IN FEET  
HEIGHTS IN METRES  
DISTANCES IN KILOMETRES

Alt set: -QNH(QFE on req);  
-hPa(mm on req).