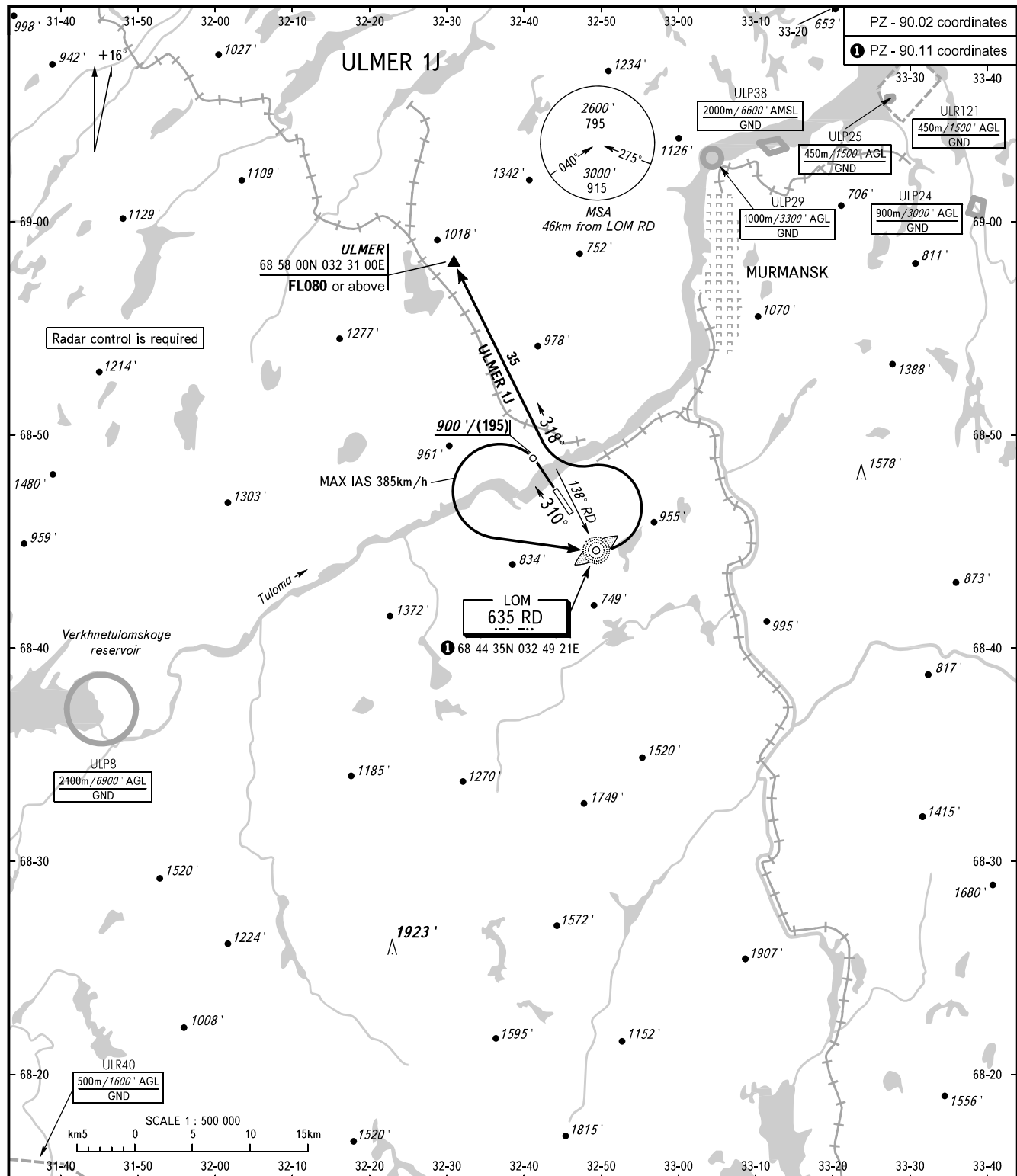


STANDARD DEPARTURE CHART  
INSTRUMENT (SID) - ICAO

TRANSITION ALTITUDE: **4000'**  
TRANSITION HEIGHT: **(1200)**

MURMANSK, RUSSIA  
MURMANSK  
RWY 31



TOWER **120.300**  
RADAR **120.700**

**WARNING:**

1. Turn before passing DER is PROHIBITED.
2. The minimum climb gradient is 4.0% up to FL080.
3. If unable to maintain minimum climb gradient the flight crew shall advise ATS unit.

BEARINGS AND TRACKS ARE MAGNETIC  
ALTITUDES AND ELEVATIONS IN **FEET**  
HEIGHTS IN METRES  
DISTANCES IN KILOMETRES

Alt set: -QNH(QFE on req);  
-hPa(mm on req).