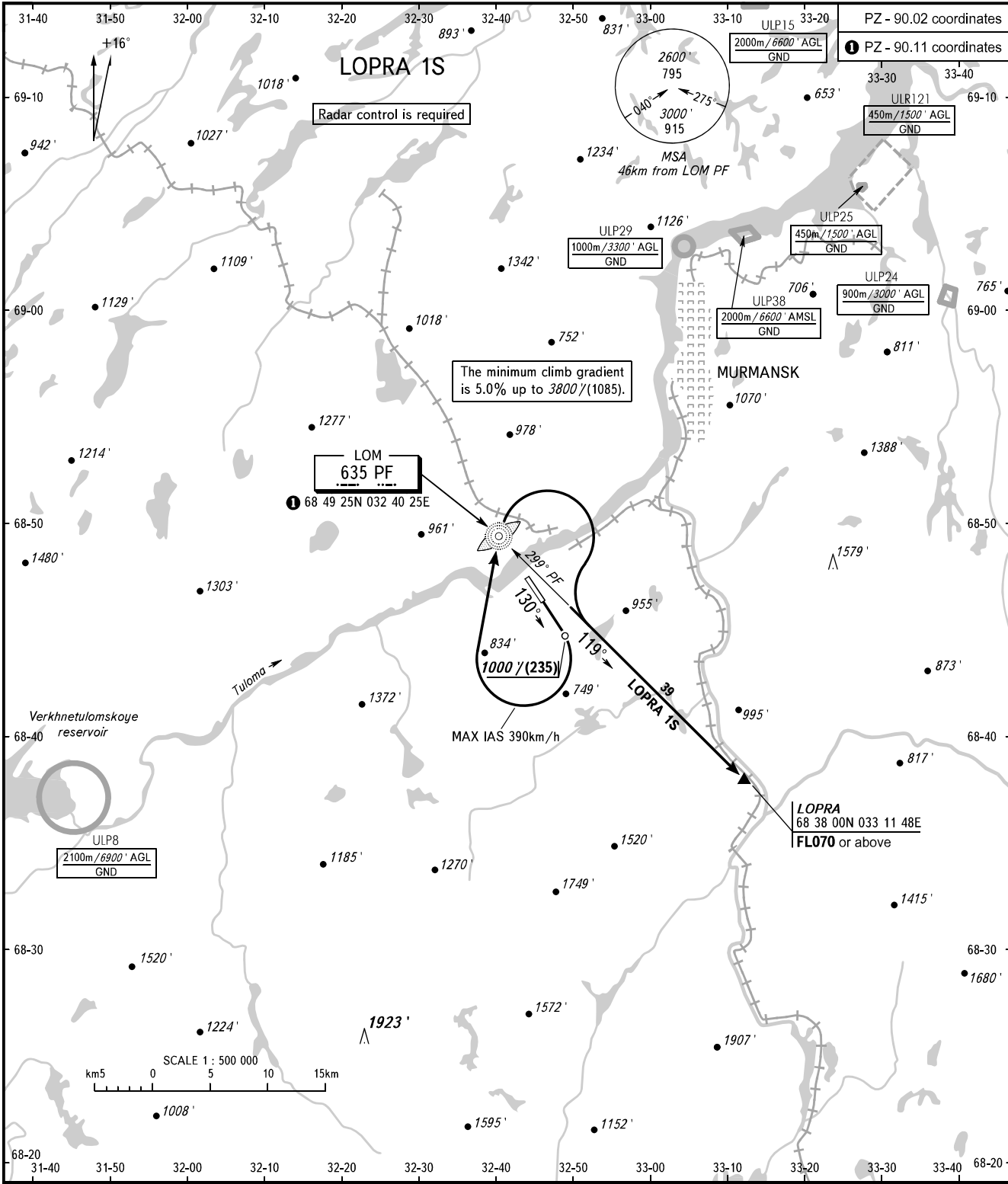


STANDARD DEPARTURE CHART  
INSTRUMENT (SID) - ICAO

TRANSITION ALTITUDE: **4000'**  
TRANSITION HEIGHT: **(1200)**

MURMANSK, RUSSIA  
MURMANSK  
RWY 13



TOWER **120.300**  
RADAR **120.700**

BEARINGS AND TRACKS ARE MAGNETIC  
ALTITUDES AND ELEVATIONS IN **FEET**  
HEIGHTS IN METRES  
DISTANCES IN KILOMETRES

**WARNING:**  
1. Turn before passing DER is PROHIBITED.  
2. There are close-in obstacles with MAX ELEV (60').  
3. If unable to maintain minimum climb gradient the flight crew shall advise ATS unit.

Alt set: -QN(H)(QFE on req);  
-hPa(mm on req).

CHANGE: Heading